

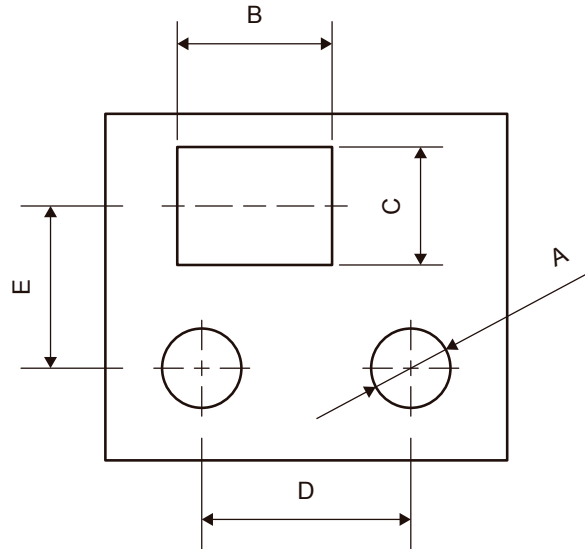
# STANDARD TOLERANCE for MACHINING SERVICES

Our standard tolerance for machining services.

## Hole/Cut Size • Hole/Cut Distance

### Hole/Cut Size (A • B • C)

Dimension	Tolerance
0.5 ~ 3.0	±0.2
3.1 ~ 6.0	±0.2
6.1 ~ 30.0	±0.2
30.1 ~ 120.0	±0.3
120.1 ~ 400.0	±0.5
400.1 ~ 1,000.0	±0.8



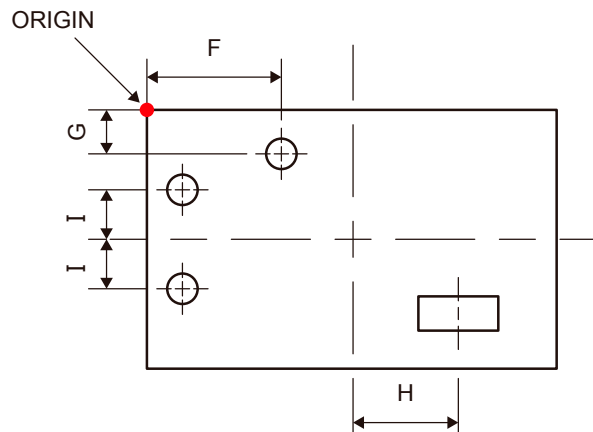
### Hole/Cut Distance (D • E)

Dimension	Tolerance
0.5 ~ 3.0	±0.2
3.1 ~ 6.0	±0.2
6.1 ~ 30.0	±0.2
30.1 ~ 120.0	±0.4
120.1 ~ 400.0	±0.6
400.1 ~ 1,000.0	±0.8

## Distance on Panel - F and G from ORIGIN • H and I from centerline

### Punch Press • Laser Cutting (F • G • H • I)

Dimension	Tolerance
0. ~ 3.0	±0.2
3.1 ~ 6.0	±0.2
6.1 ~ 30.0	±0.2
30.1 ~ 400.0	±0.5
400.1 ~ 1,000.0	±0.6



### CNC Machining (F • G)

Dimension	Tolerance
0.5 ~ 3.0	±0.3
3.1 ~ 6.0	±0.3
6.1 ~ 30.0	±0.4
30.1 ~ 120.0	±0.6
120.1 ~ 400.0	±0.8
400.1 ~ 1,000.0	±1.0

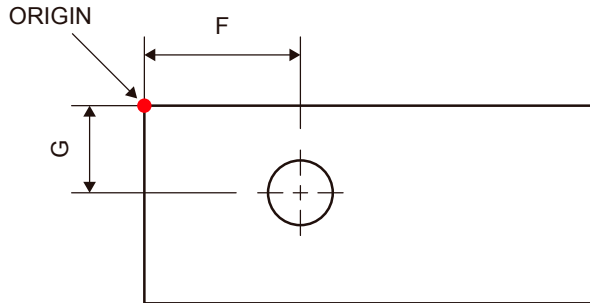
### CNC Machining (H • I)

Dimension	Tolerance
0.5 ~ 3.0	±0.5
3.1 ~ 6.0	±0.5
6.1 ~ 30.0	±0.6
30.1 ~ 120.0	±0.8
120.1 ~ 400.0	±1.0
400.1 ~ 1,000.0	±1.2

**Distance on Enclosure - F and G from ORIGIN**

**Material : Extruded Aluminum (F · G)**

Dimension	Tolerance
0.5 ~ 3.0	±0.5
3.1 ~ 6.0	±0.5
6.1 ~ 30.0	±0.6
30.1 ~ 120.0	±0.8
120.1 ~ 400.0	±1.0
400.1 ~ 1,000.0	±1.2



**Material : Aluminum Diecast (F · G)**

Dimension	Tolerance
0.5 ~ 3.0	±1.3
3.1 ~ 6.0	±1.3
6.1 ~ 30.0	±1.4
30.1 ~ 120.0	±1.6
120.1 ~ 400.0	±1.8
400.1 ~ 1,000.0	±2.0

**Material : Plastic (F · G)**

Dimension	Tolerance
0.5 ~ 3.0	±0.5
3.1 ~ 6.0	±0.5
6.1 ~ 30.0	±0.6
30.1 ~ 120.0	±0.8
120.1 ~ 400.0	±1.0
400.1 ~ 1,000.0	±1.2

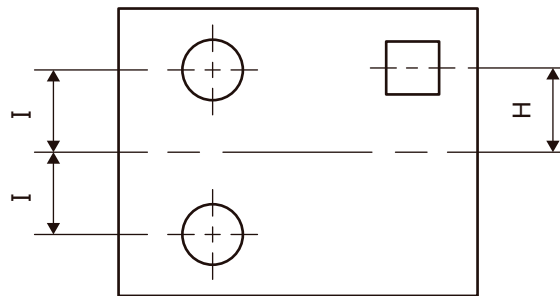
**Material : Plastic on BCAP, BCPC, BCAR, BCPR and BCPK series (F · G)**

Dimension	Tolerance
0.5 ~ 3.0	±1.1
3.1 ~ 6.0	±1.1
6.1 ~ 30.0	±1.2
30.1 ~ 120.0	±1.4
120.1 ~ 400.0	±1.6
400.1 ~ 1,000.0	±1.8

**Distance on Enclosure - H and I from Centerline**

**Material : Extruded Aluminum (H · I)**

Dimension	Tolerance
0.5 ~ 3.0	±0.8
3.1 ~ 6.0	±0.8
6.1 ~ 30.0	±0.9
30.1 ~ 120.0	±1.1
120.1 ~ 400.0	±1.3
400.1 ~ 1,000.0	±1.5



**Material : Aluminum Diecast (H · I)**

Dimension	Tolerance
0.5 ~ 3.0	±2.4
3.1 ~ 6.0	±2.4
6.1 ~ 30.0	±2.5
30.1 ~ 120.0	±2.7
120.1 ~ 400.0	±2.9
400.1 ~ 1,000.0	±3.1

**Material : Plastic (H · I)**

Dimension	Tolerance
0.5 ~ 3.0	±0.9
3.1 ~ 6.0	±0.9
6.1 ~ 30.0	±1.0
30.1 ~ 120.0	±1.2
120.1 ~ 400.0	±1.4
400.1 ~ 1,000.0	±1.6

**Material : Plastic on BCAP, BCPC, BCAR, BCPR and BCPK series (H · I)**

Dimension	Tolerance
0.5 ~ 3.0	±2.1
3.1 ~ 6.0	±2.1
6.1 ~ 30.0	±2.2
30.1 ~ 120.0	±2.3
120.1 ~ 400.0	±2.5
400.1 ~ 1,000.0	±2.8