



**TAKACHI**



# LASER MARKING SERVICE

Printing what used to be impossible into a reality!



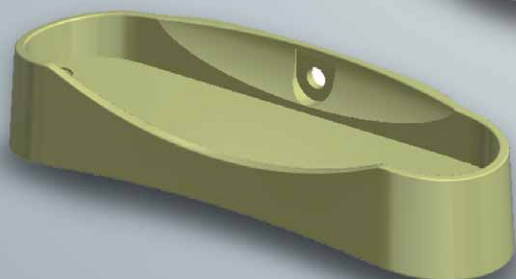
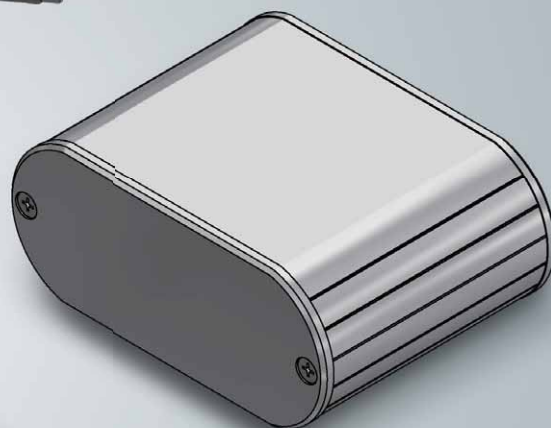
# LASER MARKING SERVICE

Laser marking is a process that utilizes a focused beam of light to mark the surface of an object, by altering the material's properties and appearance.

It can also be performed on uneven, curved, and even inclined surfaces.



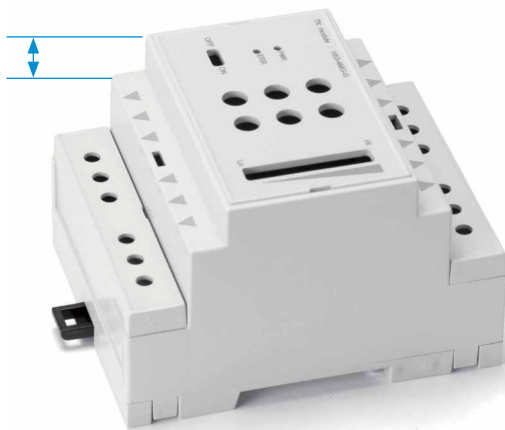
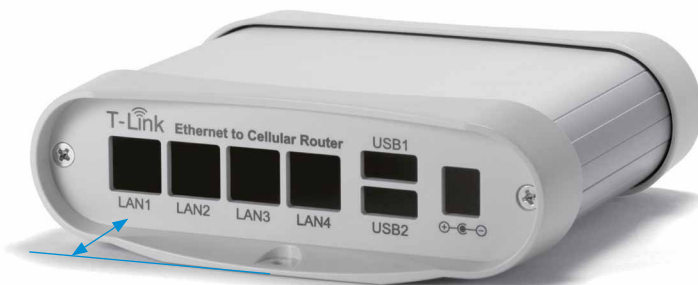
Video available



## Feature 1

# Print on Uneven Surface

Possible to print to the surfaces with a height difference of 3.5mm or more where inkjet and silkscreen printing are not able to.



**Feature2**

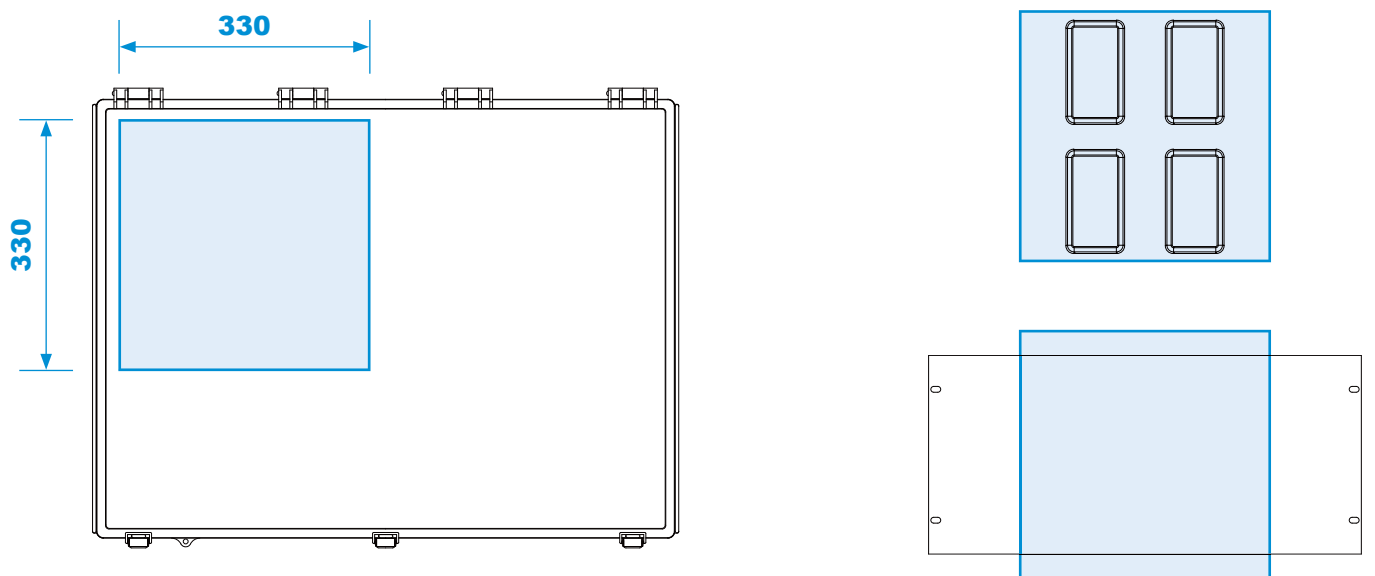
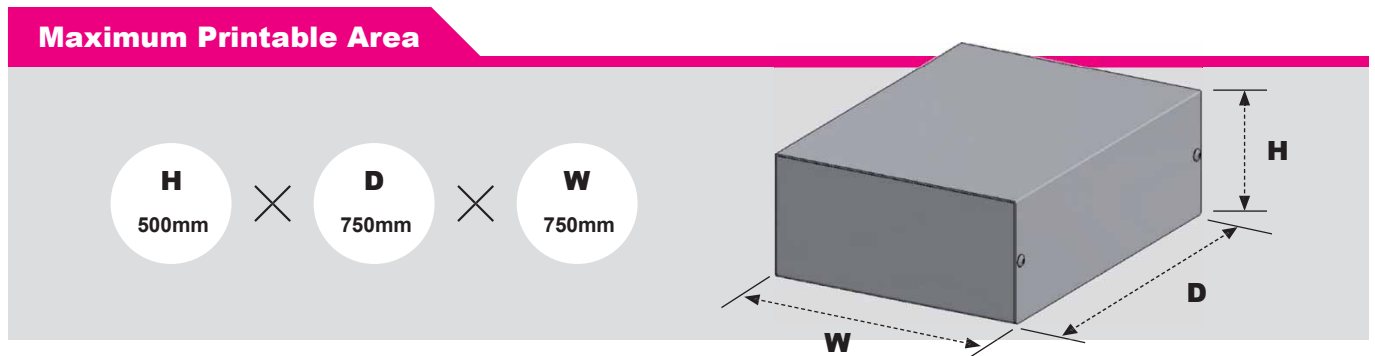
# High Class Finish on Metallic Enclosures

Due to the laser marking the surface directly, it gives metallic enclosures a high class finish. Optimal solution to achieve a high class look and distinctive image on you products.



## Printable Area and Material

- 330mm x 330mm (for 1 process)
- Material : Aluminum, Stainless-steel, Plastic, and others.
- Print larger area than 330mm x 330mm can be done with Inkjet or Silkscreen printing.



Partial marking can be done on larger enclosures or panels exceeding printable area.

## ● Grade of Laser marking finishing by Material



- Aluminum - Unfinished
- Good (\*Light shade)



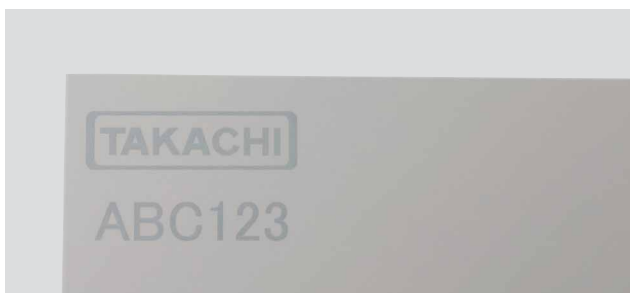
- Aluminum - Silver anodized
- Very Good



- Aluminum - Black anodized or painted
- Very Good



- Aluminum - Silver painted
- Very Good



- Aluminum - Light gray painted
- Good (\*Light shade)



- Stainless steel - Unfinished
- Good (\*Light shade)



- Aluminum diecast - Unfinished
- Good



- Aluminum diecast - Silver painted
- Good



- Aluminum diecast - Black painted
- Good

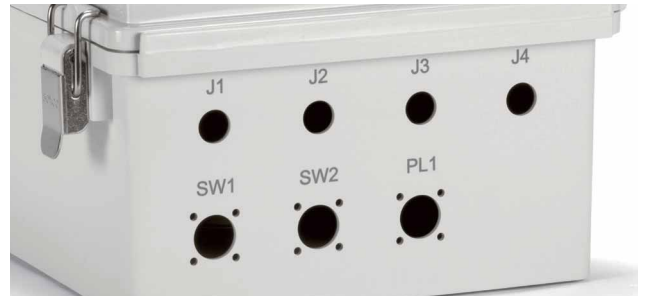


- Aluminum diecast - Metallic gray painted
- Fair (\*Very light shade)

## ● Grade of Laser marking finishing by Material



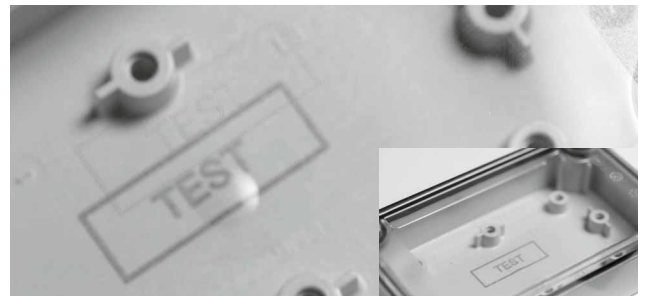
- Aluminum diecast - Light gray painted
- Good (\*Shade may vary by production batch)



- Polycarbonate - Light gray
- Good (\*Shade may vary by production batch)



- ABS/Flame resistant ABS - White
- Good (\*Shade may vary by production batch)



- Polycarbonate - Transparent
- Not Good (Laser passes through the material, marking the internal surface)



- ABS/Flame resistant ABS - Light gray
- Fair (\*Shade may vary by production batch)



- ASA - White gray
- Good (\*Shade may vary by production batch)



- ABS/Flame resistant ABS - Dark gray
- Fair (\*Shade may vary by production batch)



- ABS - Painted
- Not Good (Low visibility)



- ABS/Flame resistant ABS - Black
- Fair (\*Shade may vary by production batch)



- ABS - Other color
- Not Good (Low visibility)