

# CUSTOM ANODIZATION

Anodization is an electrochemical process that converts the aluminium surface into a decorative, durable, corrosion-resistant, anodic oxide finish.

We can process custom color anodization such as blue, green, red, purple and so on.

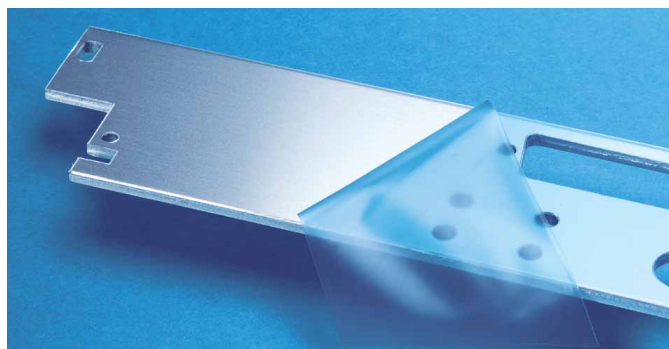


## Color Anodization

After anodization processing, a color solvent is introduced into micropores on the surface of the anodized aluminum.

Once the sealing treatment is performed, it leaves a durable color on the surface of the aluminium, which when compared with plating, the advantage is that the color will not be easily worn off.

\*Shades of color can be vary by processing lot.



## Clear Alodine Finish

Clear chromate conversion coating on aluminum. Conductivity can be achieved.

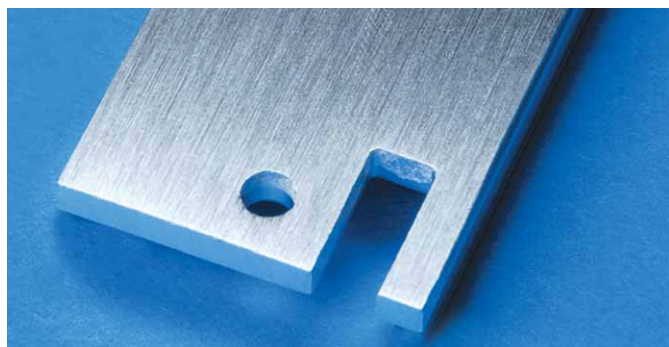
\*Anodization / Clear Alodine Finish cannot be done on aluminium diecast parts.

# CUSTOM HAIRLINE FINISH

Aesthetically brushed finish on aluminium or stainless steel.

Making small scratches or fingerprint caused by daily use less noticeable.

Emphasizing metallic feel of the material and used for high class products.



# CUSTOM PAINTING



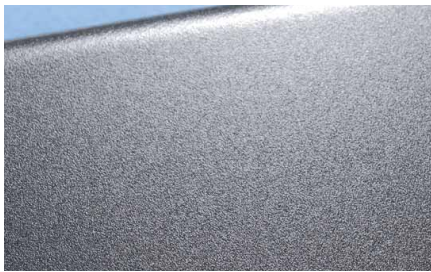
## ■ Suitable for Painting

Any plastic and metal enclosures/cases.

## ■ Color Specification

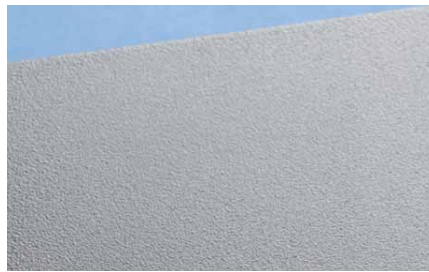
Specify color number in Pantone, RAL or Munsell Color System.

\*for RAL and Munsell, a similar color tone will be chosen.



## ● One Tone Painting

Tiny aluminum particles in the paint provides an even texture on the surface, giving it the look of a high class product.



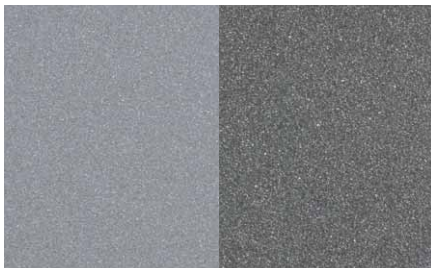
## ● Powder Coating

Powder paint material adheres using static electricity. Environmentally safe painting method without solvent use.



## ● Paint on Plastic

Optimal solution for covering molding marks (weld, flow mark), or to have improved color visibility.



## ● Metallic Painting

Paint with metallic gloss. Powder aluminum or other metals are present in the resin. Provides a glossy finish and a higher class look.



## ● Conductive Coating

Recommended if conductivity is required. A special resin containing nickel filler or powder copper for conductivity is contained in it.

## ● Weather Resistant

Coating specially blended resin based on urethane for weather resistant purposes. Maintaining the gloss of the products and reducing color fade and degradation.

