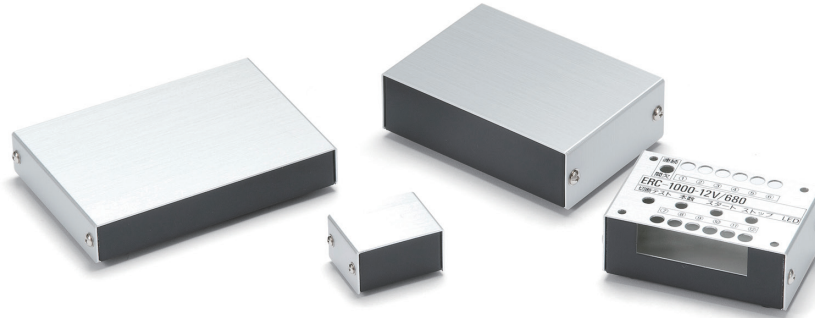
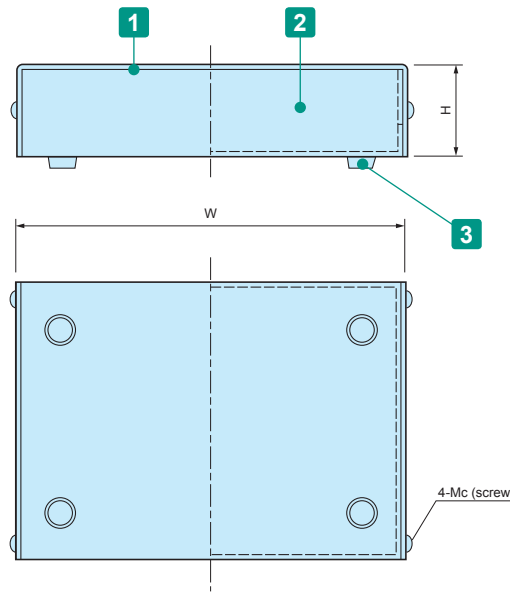


YM SERIES

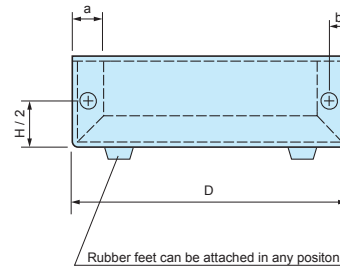
FLAT ALUMINIUM CASE



YM dimensions



■ Drawings below are reference examples only.
DXF/DWG/PDF drawings available on our website.



Included screws and washers
 Truss head • Nickel plated x 4 pcs
 (YM-30, 40 = M2.5)
 (YM-65, 90, 115 = M2.6-5)
 (Others = M3-5)
 Flat washer • Nickel plated x 4 pcs
 (YM-30, 40 = M2)
 (YM-65, 90, 115 = M2.6)
 (Others = M3)

Components

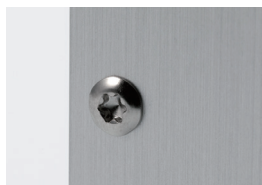
No.	Part name	Pcs	Material	Color / Finish
1	Cover	2	Aluminium A1050P t = 1.0	Silver / Hairline brushed & Anodized
2	Base	2	Aluminium A1100P t = 1.0	Black / Painted • Silver
3	Rubber feet	4	Synthetic rubber	Black
-	Screw	1 set	Brass	Nickel plated

Note: The cover and base are covered with a protective film on one side. Remove before assembly.

Product no. / Dimensions

Product no.	W	H	D	a	b	c	Weight (g)
YM- 30	30	18	25	8	4	2	12
YM- 40	40	22	30	8	4	2	18
YM- 50	50	30	45	10	5	3	36
YM- 65	65	20	50	10	5	2.6	40
YM- 80	80	30	50	10	5	3	53
YM- 90	90	20	60	10	5	2.6	55
YM-100	100	30	70	10	5	3	80
YM-115	115	20	80	10	5	2.6	80
YM-130	130	30	90	10	5	3	115
YM-150	150	40	100	10	5	3	155

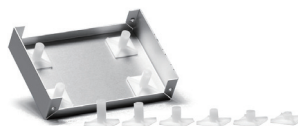
Accessories (Optional parts) ■ MR3-5Z and EV3-5S are not applicable for YM-30, 40, 65, 90, and 115 models.



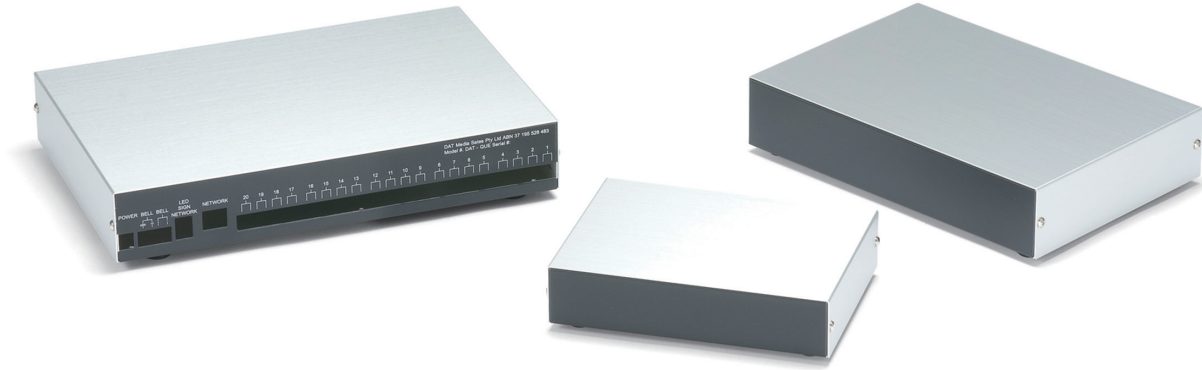
TORX screw MR3-5Z
See page MR • FDR-1



Conductive screw EV3-5S
See page EV-1

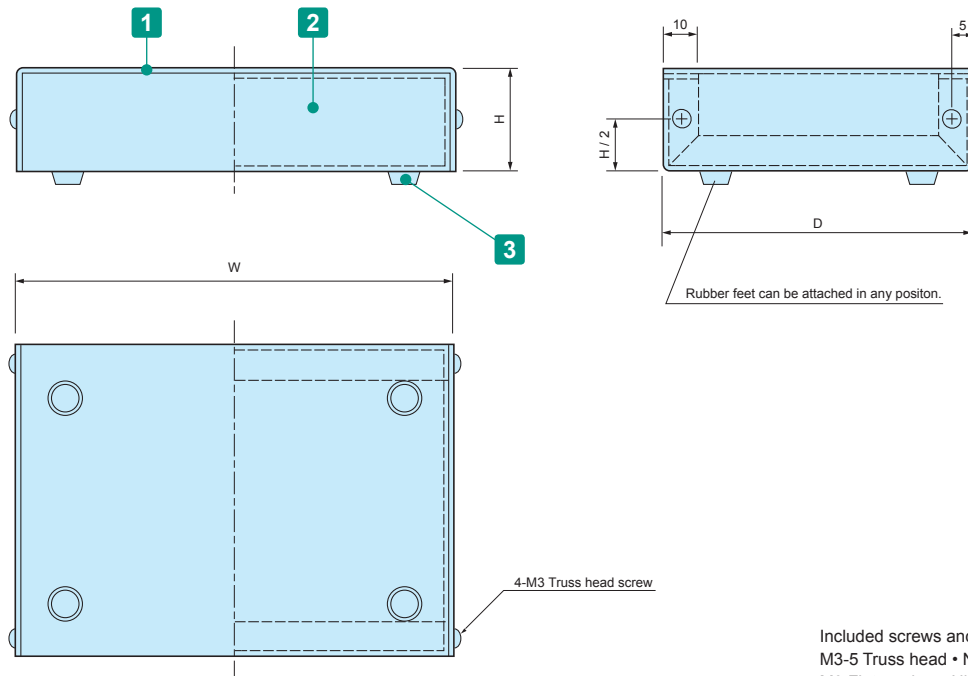


Adhesive standoff T-600, T-700, ASR
See page Standoff-1



YM dimensions

■ Drawings below are reference examples only.
DXF/DWG/PDF drawings available on our website.



Included screws and washers
M3-5 Truss head • Nickel plated x 4 pcs
M3 Flat washer • Nickel plated x 4 pcs

Components

No.	Part name	Pcs	Material	Color / Finish
1	Cover	2	Aluminium A1050P t = 1.0	Silver / Hairline brushed & Anodized
2	Base	2	Aluminium A1100P t = 1.0	Black / Painted • Silver
3	Rubber feet	4	Synthetic rubber	Black
-	Screw	1 set	Brass	Nickel plated

■ Note: The cover and base are covered with a protective film on one side. Remove before assembly.

Product no. / Dimensions

Product no.	W	H	D	Weight (g)
YM-180	180	40	130	230
YM-200	200	40	150	280
YM-250	250	50	170	395
YM-300	300	50	200	525
YM-350	350	55	230	680
YM-400	400	55	250	815

MR SERIES

SLOTTED RAISED COUNTERSUNK TORX SCREW



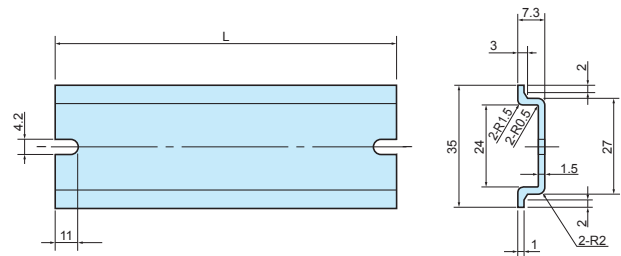
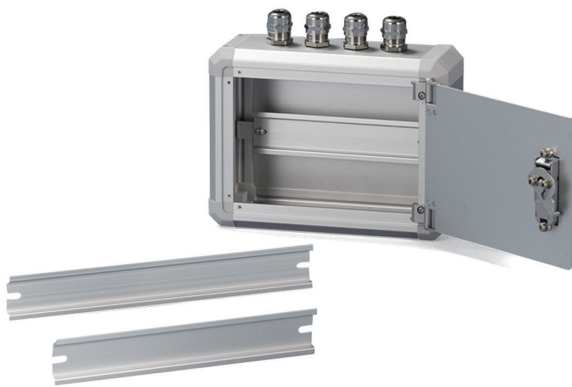
- For use with top / bottom cover.
- Recommended for aesthetic purposes, or for tampering resistance.
- Requires the use of a specialized screwdriver.

Product no. / Dimensions

Product no.	M	L	TORX head no.	Material	Color / Finish	Pack of
MR3-5ZS	3	5	T10	Steel	Nickel plated	20
MR3-5ZB	3	5	T10	Steel	Black trivalent chromate	20

FDR SERIES

DIN-RAIL



Components

Material	Color / Finish
Aluminium A6063S-T5	Silver / Anodized

Product no. / Dimensions

Product no.	L	Box length
FDR- 50	50	100
FDR-100	100	150
FDR-150	150	200
FDR-205	205	250
FDR-249	249	300
FDR-300	300	350
FDR-350	350	400
FDR-450	450	500
FDR-550	550	600

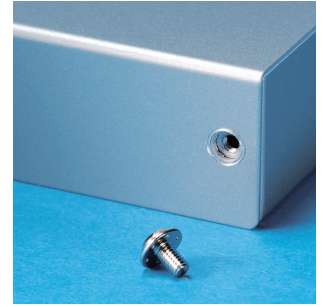
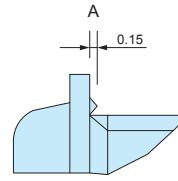
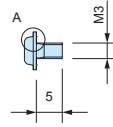
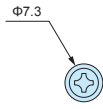
- FCK mounting bracket is required for installation.
- Not suitable for FC4 (H = 37.9mm).

EV3-5S

CONDUCTIVE SCREW



Conductive



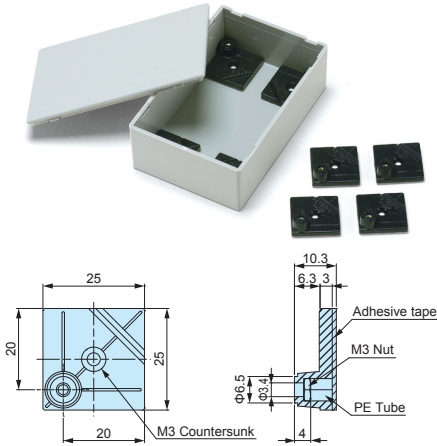
- When tightened, protrusions on the underside of the screw head will shave away at painted or anodized surface to expose the base material for achieving conductivity.

Product no. / Dimensions

Product no.	M	L	Material	Finish	Pack of
EV3-5S	3	5	Steel	Nickel plated	20

T-600

M3 INSERT NUT ADHESIVE STANDOFF



- Double-sided adhesive tape allows the standoff to be mounted easily; allows PCB mounting in non-boss enclosures.

NOTE

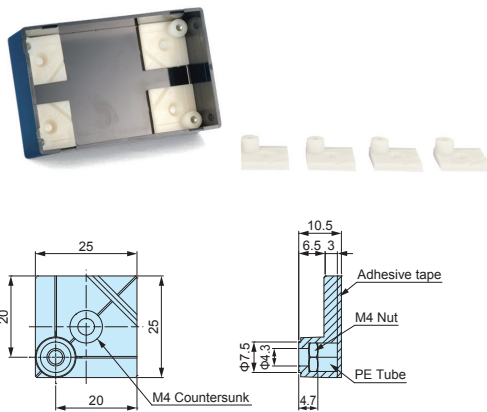
- Please ensure the surface is cleaned and grease-free before adhering.
- Once removed, it cannot be adhered on again.
- Recommended screw torque: 4kgf • cm (0.4N • m).

Product no. / Dimensions

Product no.	Material	Color	Weight (g)	Pack of
T-600	ABS	Black	2.6 (g) / pc	10

T-700

M4 INSERT NUT ADHESIVE STANDOFF



- Double-sided adhesive tape allows the standoff to be mounted easily; allows PCB mounting in non-boss enclosures.

NOTE

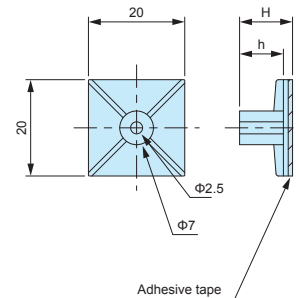
- Please ensure the surface is cleaned and grease-free before adhering.
- Once removed, it cannot be adhered on again.
- Recommended screw torque: 8.1kgf • cm (0.81N • m).

Product no. / Dimensions

Product no.	Material	Color	Weight (g)	Pack of
T-700	ABS	Natural	2.6 (g) / pc	10

ASR SERIES

ADHESIVE STANDOFF



- M3 tapping screw use adhesive standoff.
Recommended to be used with EM-3 or EM-3-6 tapping screws (See page 115).

NOTE

- Please ensure the surface is cleaned and grease-free before adhering.
- Once removed, it cannot be adhered on again.
- Recommended screw torque: 4kgf • cm (0.4N • m).

Product no. / Dimensions

Product no.	H	h	Weight (g)	Pack of
ASR- 5	5.1	3.1	0.9 (g) / pc	10
ASR- 6	6.4	4.4	1.0 (g) / pc	10
ASR- 7	7.2	5.1	0.9 (g) / pc	10
ASR- 8	8.1	6.3	0.9 (g) / pc	10
ASR- 9	9	7	1.0 (g) / pc	10
ASR-11	11	9	1.0 (g) / pc	10
ASR-13	12.7	10.7	1.2 (g) / pc	10
ASR-14.5	14.7	12.8	1.1 (g) / pc	10
ASR-16	15.9	13.9	1.3 (g) / pc	10
ASR-19	19.1	17.1	1.4 (g) / pc	10

■ Material: Nylon 66 UL94V-2