

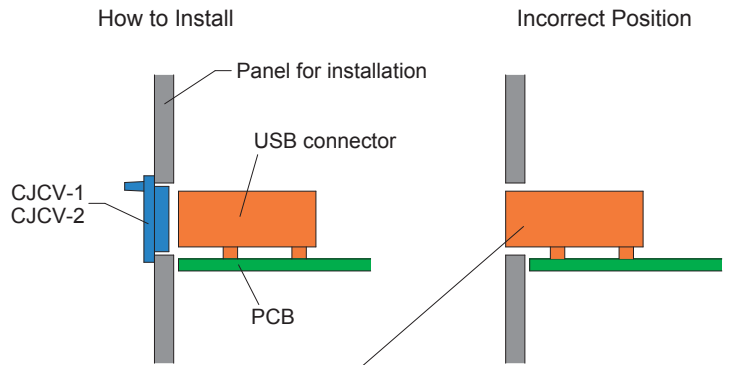
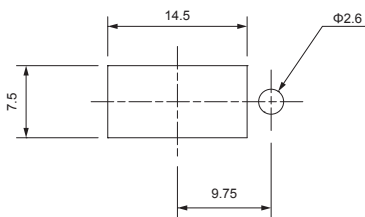
CJCV SERIES

USB DUST COVER FLAP



- USB TYPE-A connector dust cover plug with stopper cord.
- Hole milling is required for flap installation.

Mounting hole dimension



- The USB connector should be mounted such that it does not protrude out from the panel's inner side.

Product no. / Feature

Product no.	Material	Color	Panel thickness	A	Pack of
NEW CJCV-1	TPU	Black	0.5 ~ 2.0mm	8	10
NEW CJCV-2	TPU	Black	2.0 ~ 12.0mm	18.2	10

USBC SERIES

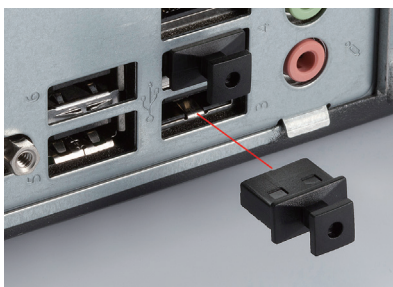
USB TYPE-A DUSTPROOF BLIND PLUG



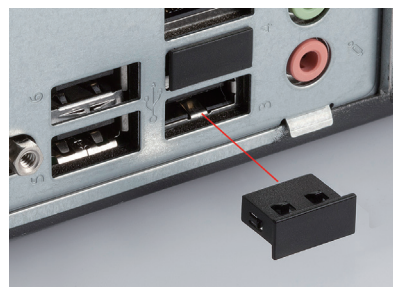
USB TYPE-A

- Easy insertion plug for USB type-A connector

USBC-2 (Pull-tab type)



USBC-8 (No pull-tab type)



Product no. / Feature

Product no.	Material	Color	Pack of
NEW USBC-2	ABS UL94HB	Black	10
NEW USBC-8	PA66 UL94V-2	Black	10

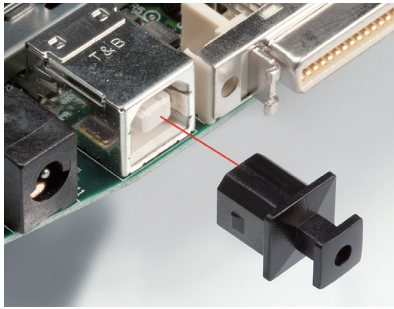
USBC SERIES

USB TYPE-B • TYPE-C DUSTPROOF BLIND PLUG

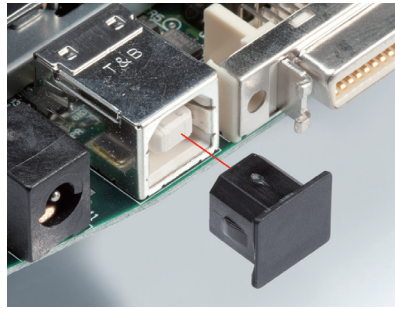


USB TYPE-B

USBC-1 (Pull-tab type)



USBC-3 (No pull-tab type)

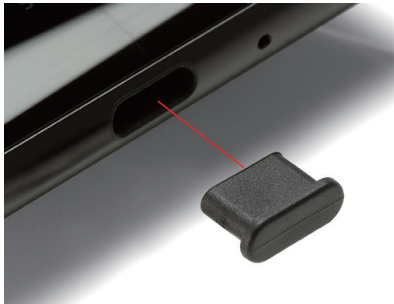


Product no. / Feature

Product no.	Material	Color	Pack of
NEW USBC-1	ABS UL94V-0	Black	10
NEW USBC-3	PP UL94HB	Black	10

USB TYPE-C

USBC-3C



USB Type-C connector



Product no. / Feature

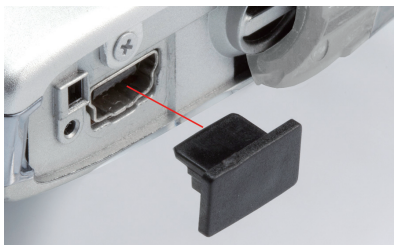
Product no.	Material	Color	Pack of
NEW USBC-3C	PE	Black	10

USBC SERIES

MINI USB • MICRO USB DUSTPROOF BLIND PLUG



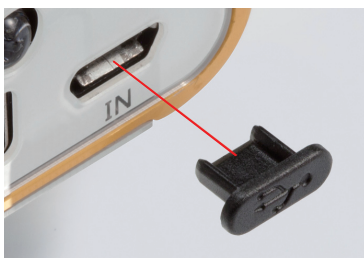
MINI USB USBC-10



Product no. / Feature

Product no.	Material	Color	Pack of
NEW USBC-10	TPE	Black	10

MICRO USB USBC-31



Product no. / Feature

Product no.	Material	Color	Pack of
NEW USBC-31	PE	Black	10