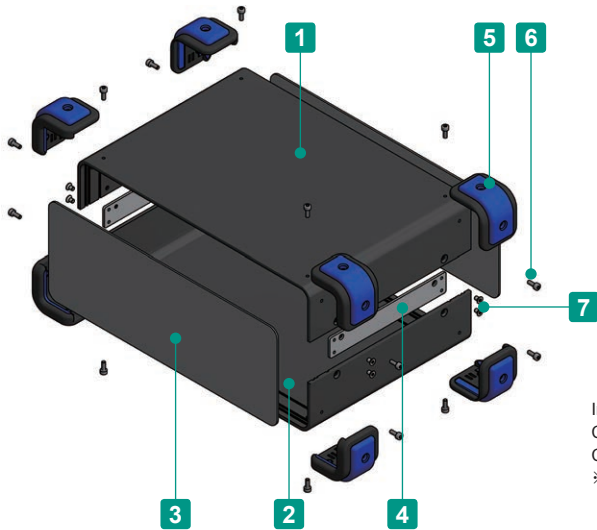


UCG SERIES

UNIVERSAL ALUMINIUM CASE with CORNER GUARD



- Aluminium case equipped with shockproof and anti-slip corner guards.
- Available in 8 sizes and 5 different corner guard color variations.
- Custom sizes available.

Included screws

Corner guard screw - M3-8 Hexagonal : Steel : Trivalent chromate x 16 pcs

Case screw - M3 Hexagonal countersunk : Steel : Trivalent chromate x 12 pcs

※2 Hexagonal wrenches included. (The larger for corner guard screw, the smaller for case screw)

Components

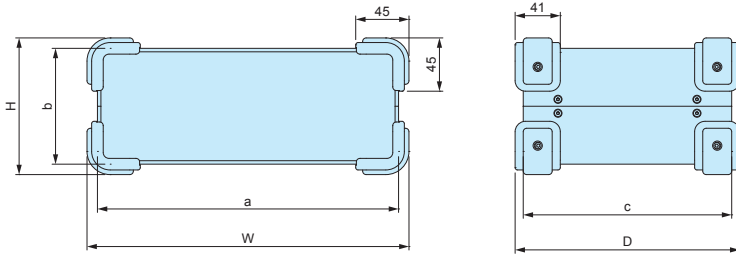
No.	Part name	Pcs	Material	Color / Finish
1	Top cover	1	Extruded aluminium A6063s-T5	Black / Painted
2	Bottom cover	1	Extruded aluminium A6063s-T5	Black / Painted
3	Panel	2	Aluminium A1100P t=1.5	Black / Painted
4	Joint plate	2	Steel SPCC t=2.0	Trivalent chromate
5	Corner guard	8	PP + Silicone	Black • Emerald • Gray • Navy • Red
6	Corner guard screw	16	Steel	Trivalent chromate
7	Case screw	12	Steel	Trivalent chromate

Color Type

Code	BB Black / Black	BE Black / Emerald	BG Black / Gray	BN Black / Navy	BR Black / Red
Color					

**UCG dimensions**

■ Drawings below are reference examples only.  
DXF/DWG/PDF drawings available on our website.



**Accessories (Optional parts)**



Mounting plate UCC series  
See website



Elastomer handle FM200 series  
See website

**Product no. / Dimensions**

■ Please suffix color code at the end of the product number.

Product no.	W	H	D	a	b	c	Standard Compatible Mounting Plate	Weight (kg)
<b>NEW</b> UCG15- 9-20□□	168	108	214	150	90	200	YES	1.14
<b>NEW</b> UCG18-10-24□□	198	118	254	180	100	240	YES	1.44
<b>NEW</b> UCG18-18-28□□	198	198	294	180	180	280	n/a	2.23
<b>NEW</b> UCG20- 9-14□□	218	108	154	200	90	140	YES	1.13
<b>NEW</b> UCG22-12-16□□	238	138	174	220	120	160	n/a	1.28
<b>NEW</b> UCG26-10-18□□	278	118	194	260	100	180	YES	1.96
<b>NEW</b> UCG32-12-22□□	338	138	234	320	120	220	YES	2.13
<b>NEW</b> UCG38-15-26□□	398	168	274	380	150	260	n/a	3.19

■ Mounting plate can be custom ordered.

**Accessories (Optional parts)**

**UG-1**

**CORNER GUARD for UC • UCG**



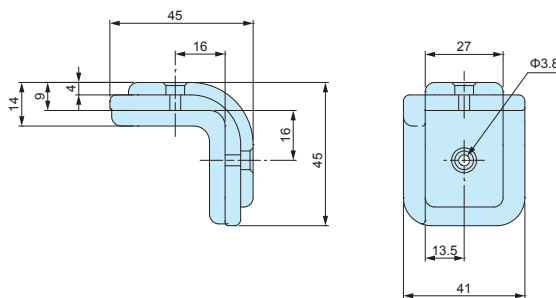
**Application example**



- Corner guard parts for UC • UCG series.
- M3 thread holes are required in order to fix on UC series.
- Available in 5 different color variations.

**UG-1 dimensions**

■ DXF/DWG/PDF drawings available on our website.



**Components**

No.	Part name	Material
1	Corner guard base	PP
2	Corner guard	Silicone
3	Screw (M3-8 Hexagonal)	Steel

**Product no. / Details**

Product no.					Weight (g)	Pack of
● Black	● Emerald	● Gray	● Navy	● Red		
<b>NEW</b> UG-1B	<b>NEW</b> UG-1E	<b>NEW</b> UG-1G	<b>NEW</b> UG-1N	<b>NEW</b> UG-1R	210.5	8

Included screw : M3-8 Hexagonal : Steel : Trivalent chromate x 16 pcs + 2 Hexagonal wrench

**UCC SERIES**

**MOUNTING PLATE for UC**

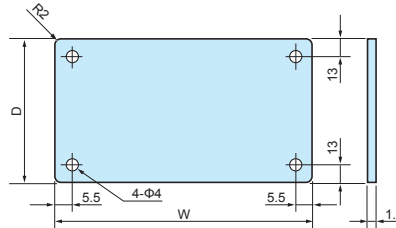
■ Drawings below are reference examples only.  
DXF/DWG/PDF drawings available on our website.

**Components**

Part name	Pcs	Material	Color / Finish
Mounting plate	1	Aluminium A1050P t=1.5	Unfinished
Screw	4	Steel M3-5	Trivalent chromate

■ See "Suitable cases" on the chart below for matching cases.

**Type A**

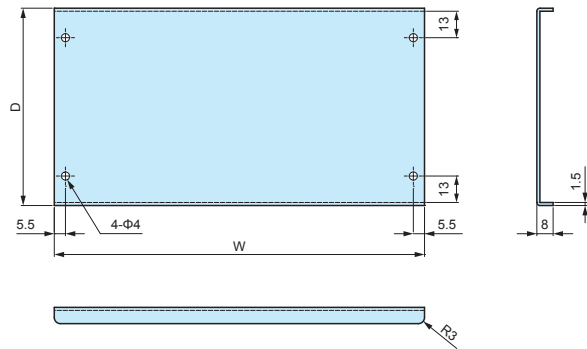
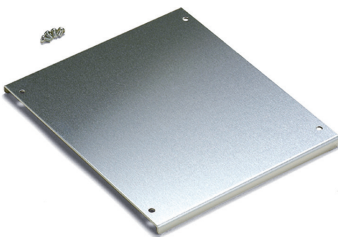


**Product no. / Dimensions (Type A)**

Product no.	Suitable cases	W	D
UCC 6- 8	UC 6- 3- 8	43	58
UCC 7-10	UC 7- 3-10	58	78
UCC 8- 6	UC 8- 3- 6	63	38
UCC11- 8	UC 11- 3- 8	93	58
	UC 11- 5- 8		
UCC 9-12	UC 9- 5-12	72	94
UCC10-14	UC 10- 4-14	82	94
UCC12-16	UC 12- 7-16	101	110
UCC13-18	UC 13- 4-18	111	130
UCC15-20	UC 15- 8-20	131	150
	UCG15- 9-20		

Product no.	Suitable cases	W	D
UCC14-10	UC 14- 4-10	123	78
	UC 14- 6-10		
UCC15-12	UC 15-10-12	132	94
UCC17-12	UC 17- 5-12	152	94
	UC 17- 7-12		
UCC 7-14	UC 7- 8-14	57	94
UCC10-18	UC 10-11-18	81	130
UCC12-22	UC 12-14-22	101	170
	UCY12-14-22		

**Type B**

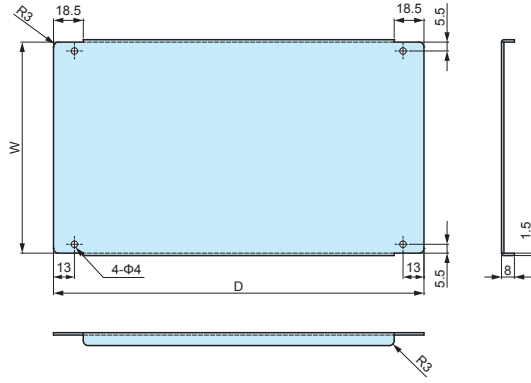


**Product no. / Dimensions (Type B)**

Product no.	Suitable cases	W	D
UCC16-22	UC 16- 5-22	146	173
UCC18-24	UC 18-10-24	161	193
	UCY18-10-24		
UCC20-14	UCG18-10-24	182	97
	UC 20- 5-14		
	UC 20- 8-14		
UCC20-14	UCG20- 9-14	182	97
	UC 20- 8-14		
UCC22-26	UC 22-12-26	201	213
UCC20-16	UC 20-12-16	181	113
UCC26-18	UC 26- 5-18	241	133
	UC 26-10-18		
	UCG26-10-18		

Product no.	Suitable cases	W	D
UCC26-20	UC 26- 7-20	241	153
UCC32-22	UC 32- 5-22	301	173
	UCG32-12-22		
UCC32-24	UC 32- 8-24	301	193
UCC35-26	UC 35-13-26	331	213
UCC43-28	UC 43- 5-28	411	233
	UC 43-14-28		

Type C



**Product no. / Dimensions (Type C)**

Product no.	Suitable cases	W	D
UCC15-28	UC 15-18-28	134	230
	UCY15-18-28		
UCC18-34	UC 18-21-34	163.6	290
UCC24-34	UC 24-14-34	223.6	290

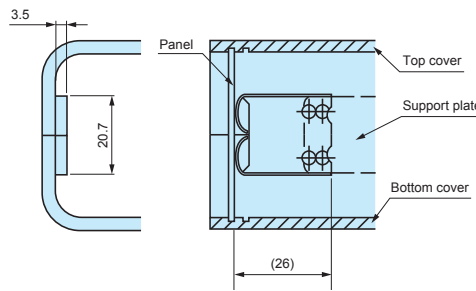
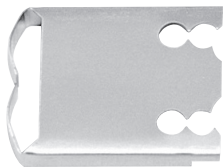
**UCF-26**

**PANEL RETAINER for UC**

- Use to minimize panel vibration.
- Possible to use with UCK-P mounting bracket.

**Installation drawings**

■ UCF-26 and the joint plate on UC case with screw fastening.

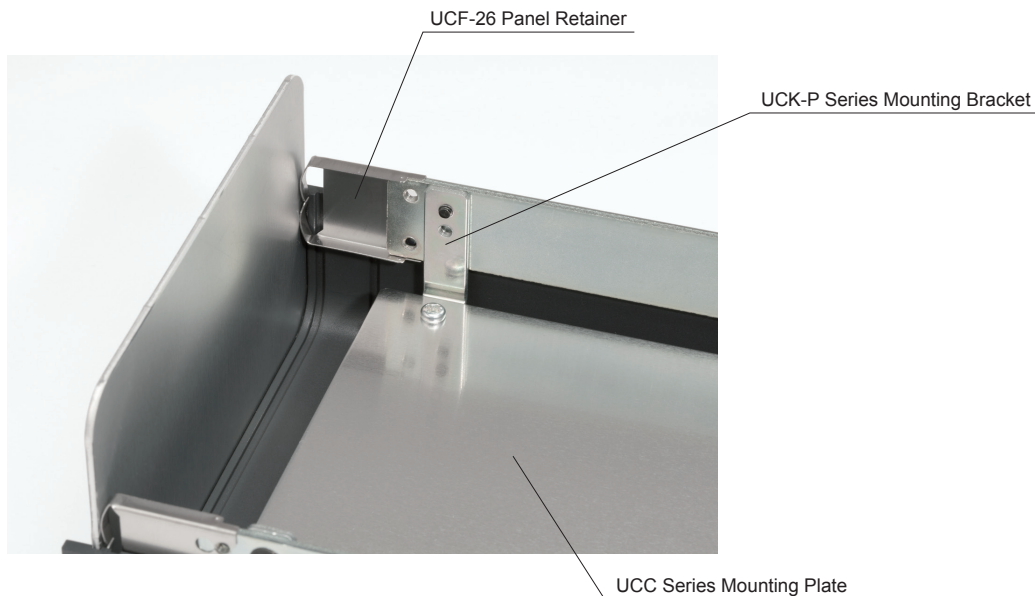


**Product no.**

Product no.	Material	Finish	Pack of
UCF-26	Stainless steel t=0.3	Unfinished	2

■ Not applicable for use on 60, 80, 100 and 120 "D" dimension cases.

**Installation Example**



**UCK-P SERIES**

**MOUNTING BRACKET for UC**



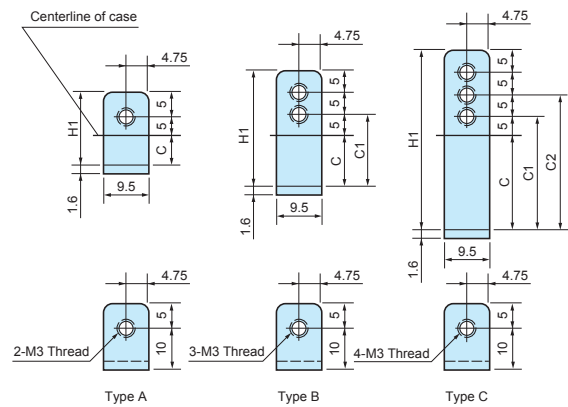
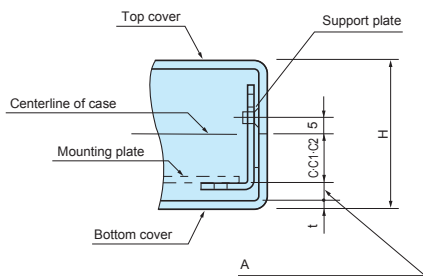
**Product no. / Dimensions**

Product no.	Type	H1	C	C1	C2	Pack of
UCK-P 13	A	13	3	—	—	4
UCK-P 17	A	17	7	—	—	4
UCK-P 27	B	27	12	17	—	4
UCK-P 42	C	42	22	27	32	4
UCK-P 57	C	57	37	42	47	4
UCK-P 72	C	72	52	57	62	4
UCK-P 87	C	87	67	72	77	4
UCK-P102	C	102	82	87	92	4

■ Screws are not included (screw set available with UC case)

■ Material / Finish : Steel SPCC t=1.6 / Trivalent chromate

■ Drawings below are reference examples only.  
DXF/DWG/PDF drawings available on our website.



■ Calculation formula for A dimension

(Case height (H) / 2) - (C, C1 or C2 + Bottom cover thickness) = A dimension.  
Use either C, C1 or C2 values from chart above.

**Bracket matching chart / A dimension**

Product no. (Case)	Bracket no.	A		
UC 6- 3- 8	UCK-P 13	12.5		
	UCK-P 17	8.5		
UC 7- 3-10	UCK-P 13	10		
	UCK-P 17	6		
UC 9- 5-12	UCK-P 17	15.5		
	UCK-P 27	10.5	5.5	
UC 10- 4-14	UCK-P 13	14.5		
	UCK-P 17	10.5		
	UCK-P 27	5.5		
UC 12- 7-16	UCK-P 27	15		
	UCK-P 42	10		
UC 13- 4-18	UCK-P 13	14		
	UCK-P 17	10		
UC 15- 8-20	UCK-P 42	15	10	5
	UCK-P 13	19		
UC 16- 5-22	UCK-P 17	15		
	UCK-P 27	10		
	UCK-P 57	19.8		
UC 24-14-34	UCK-P 72	14.8	9.8	
	UCK-P 13	10		
UC 8- 3- 6	UCK-P 17	6		
	UCK-P 13	10		
UC 11- 3- 8	UCK-P 17	6		
	UCK-P 13	10		
UC 11- 5- 8	UCK-P 17	16		
	UCK-P 27	11	6	

Product no. (Case)	Bracket no.	A		
UC 14- 4-10	UCK-P 13	15		
	UCK-P 17	11		
	UCK-P 27	6		
UC 14- 6-10	UCK-P 27	16	11	
	UCK-P 42	6		
UCG 15- 9-20	UCK-P 42	10		
	UCK-P 57	10		
UC 15-10-12	UCK-P 42	20.5	15.5	
	UCK-P 57	10.5	5.5	
UC 17- 5-12	UCK-P 17	15.5		
	UCK-P 27	10.5	5.5	
UC 17- 7-12	UCK-P 27	15.5		
	UCK-P 42	10.5	5.5	
	UCK-P 17	15.5		
UC 20- 5-14	UCK-P 13	19.5		
	UCK-P 17	15.5		
	UCK-P 27	10.5	5.5	
UC 20- 8-14	UCK-P 27	20.5		
	UCK-P 42	15.5	10.5	
UCG 20- 9-14	UCK-P 42	5		
	UCK-P 57	5		
	UCK-P 27	20	15	10
UC 20-12-16	UCK-P 57	20	15	10
UC 26- 5-18	UCK-P 13	19		
	UCK-P 17	15		
	UCK-P 27	10		
UC 26-10-18	UCK-P 42	20	15	
	UCK-P 57	10		

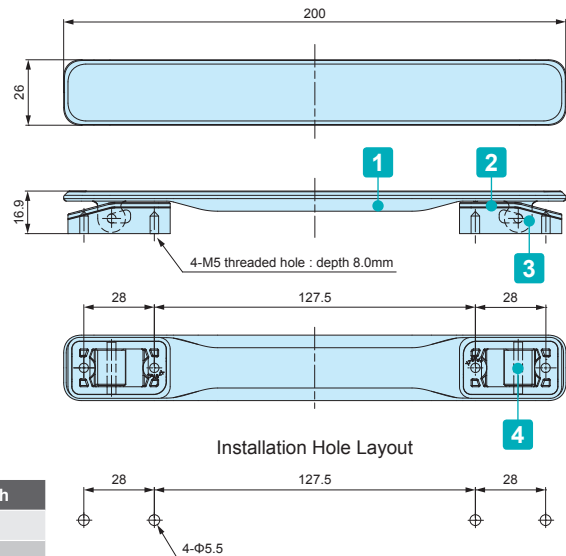
Product no. (Case)	Bracket no.	A		
UC 26- 7-20	UCK-P 27	15		
	UCK-P 42	10		
UC 18-10-24	UCK-P 42	20	15	
UCY 18-10-24		10		
UCG 18-10-24	UCK-P 57	10		
UC 22-12-26	UCK-P 57	20	15	10
UC 32- 5-22	UCK-P 13	19		
	UCK-P 17	15		
	UCK-P 27	10		
UC 32-12-22	UCK-P 57	20	15	10
UCG 32-12-22		10		
UC 32- 8-24	UCK-P 42	15	10	5
UC 35-13-26	UCK-P 57	25	20	15
	UCK-P 72	10	5	
UC 43- 5-28	UCK-P 13	19		
	UCK-P 17	15		
	UCK-P 27	10		
UC 43-14-28	UCK-P 57	20		
	UCK-P 72	15	10	
UC 7- 8-14	UCK-P 42	18	13	8
UC 10-11-18	UCK-P 57	15	10	5
UC 12-14-22	UCK-P 72	15	10	5
UCY 12-14-22		5		
UC 15-18-28	UCK-P 87	20	15	10
UCY 15-18-28		10		
UC 18-21-34	UCK-P102	19.8	14.8	9.8

FM200 SERIES

ELASTOMER CARRYING HANDLE



DXF/DWG/PDF drawings available on our website.



Comfortable and easy to grip elastomer handle.

Technical Data	
Max load : 20kg	

Components

No.	Part name	Pcs	Material	Color / Finish
1	Grip	1	PU	Black • Gray
2	Base	2	PA6	Black • Gray
3	Base cover	2	ABS	Black • Gray
4	Shaft	2	SWCH	Nickel plated
—	Screw (Pan head tapping M5-8)	4	Steel	Trivalent chromate

Product no.

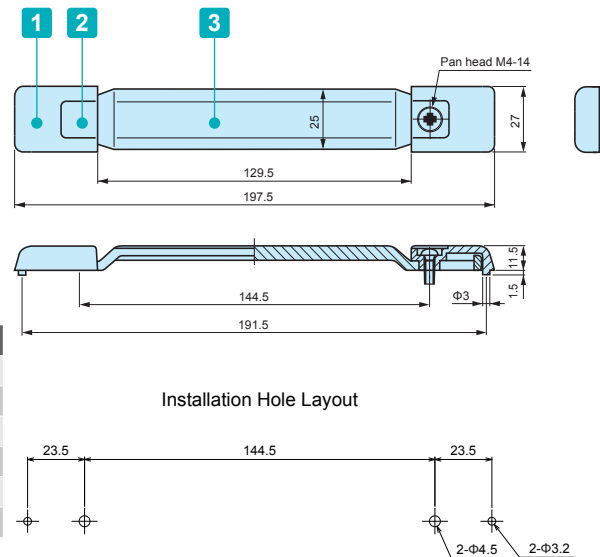
Product no.	
● Black	● Gray
NEW FM200B	NEW FM200G

MH SERIES

CARRYING HANDLE



DXF/DWG/PDF drawings available on our website.



Components

No.	Part name	Pcs	Material	Color / Finish
1	Holder	2	PC + ABS	Black • Gray
2	Blind cap	2	PP + Elastomer	Black • Gray
3	Grip	1	PP + Elastomer	Black • Gray
—	Screw (Pan head M4-14)	2	Steel	Trivalent chromate
—	Nut	2	Steel	Trivalent chromate
—	Spring washer	2	Steel	Trivalent chromate

Product no.

Product no.	
● Black	● Gray
MH-197B	MH-197G

Technical Data	
Max load : 20kg	