

- Simple structure and tough case with extruded aluminium covers.
- 36 sizes and 3 different colors for a total of 108 different combinations.
- New BB color type is available.
- 2 or 3 grooves available on top/bottom covers for adjusting front/rear panel positions or PCB insertion.
- Custom sizes are available.

Components

No.	Part name	Pcs	Material	Color / Finish
1	Top cover	1	Extruded aluminium A6063S-T5	Bronze • Light gray • Black / Anodized • Painted • Painted
2	Bottom cover	1	Extruded aluminium A6063S-T5	Bronze • Light gray • Black / Anodized • Painted • Painted
3	Panel	2	Aluminium A1050P t=1.5	Silver / Hairline brushed & Anodized
			Aluminium A1100P t=1.5	Light gray • Black / Painted
4	Joint plate	2	Steel SPCC t=2.0	Trivalent chromate
5	Screw	12	Steel M3	Black trivalent chromate
6	Rubber feet	4	Rubber	Black

- Bronze color may vary between each production lot.
- Panels are covered with a protective film on one side.

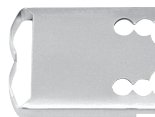
Accessories (Optional parts)



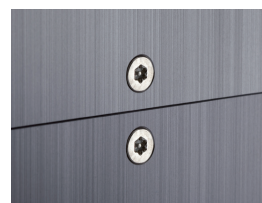
Mounting plate UCC series  
See page UC-3 ~ UC-4



Mounting bracket UCK-P series  
See page UC-5



Panel retainer UCF-26  
See page UC-4



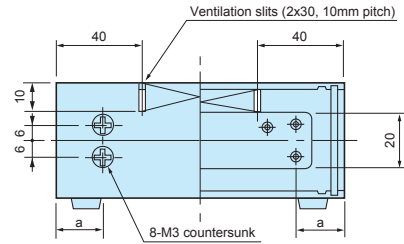
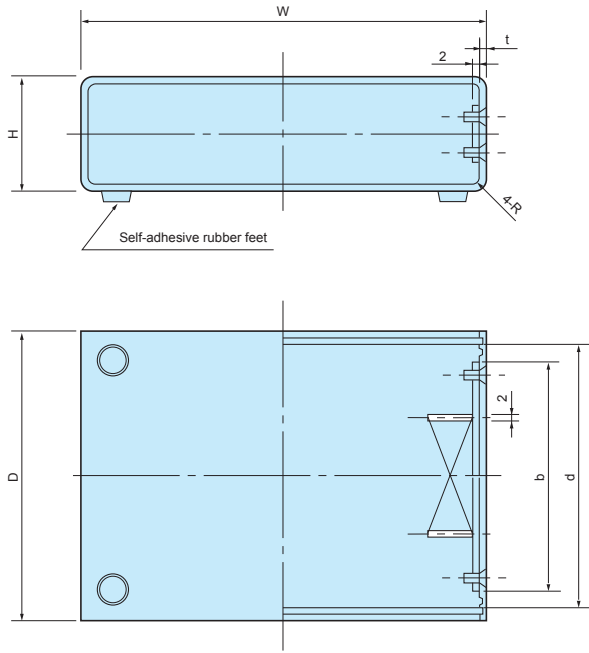
TORX screw MR-1 series  
See page 135



Aluminium isolation feet  
AFS · AFM series  
See page 191 ~ 192

**UC dimensions**

■ Drawings below are reference examples only.  
DXF/DWG/PDF drawings available on our website.



**Color Type**

<b>GG</b>	<b>DD</b>
Cover: Light gray · Painted	Cover: Bronze · Anodized
Panel: Light gray · Painted	Panel: Silver / Hairline brushed & Anodized
<b>NEW BB</b>	
Cover: Black · Painted	
Panel: Black · Painted	

**Product no. / Dimensions**

■ Please suffix color code at the end of the product number.  
■ Refer to the below chart for ventilation slits availability.

Product no.	W	H	D	d	R	t	a	b	Ventilation slits	Weight (kg)
UC 6- 3- 8□	60	35	80	72	3	2	16	58	—	0.12
UC 7- 3-10□	75	30	100	92	3	2	16	78	—	0.16
UC 9- 5-12□	90	50	120	112	5	2.5	18	94	—	0.29
UC10- 4-14□	100	40	140	130	5	2.5	28	94	—	0.32
UC12- 7-16□	120	70	160	146	8	3	30	110	—	0.56
UC13- 4-18□	130	40	180	166	8	3	30	130	—	0.56
UC15- 8-20□	150	80	200	186	8	3	30	150	○	0.86
UC16- 5-22□	165	50	220	206	8	3	30	170	○	0.84
UC18-10-24□	180	100	240	226	8	3	30	190	○	1.26
UC22-12-26□	220	120	260	246	8	3	30	210	○	1.70
UC24-14-34□	240	140	340	326	8	3.2	30	290	○	2.54
UC 8- 3- 6□	80	30	60	52	3	2	16	38	—	0.10
UC11- 3- 8□	110	30	80	72	3	2	16	58	—	0.17
UC11- 5- 8□	110	50	80	72	3	2	16	58	—	0.20
UC14- 4-10□	140	40	100	92	3	2	16	78	—	0.27
UC14- 6-10□	140	60	100	92	3	2	16	78	—	0.31
UC15-10-12□	150	100	120	112	5	2.5	18	94	—	0.53
UC17- 5-12□	170	50	120	112	5	2.5	18	94	—	0.45
UC17- 7-12□	170	70	120	112	5	2.5	18	94	—	0.51
UC20- 5-14□	200	50	140	130	5	2.5	28	94	—	0.56
UC20- 8-14□	200	80	140	130	5	2.5	28	94	—	0.67
UC20-12-16□	200	120	160	146	8	3	30	110	—	0.82
UC26- 5-18□	260	50	180	166	8	3	30	130	○	1.02
UC26-10-18□	260	100	180	166	8	3	30	130	○	1.26
UC26- 7-20□	260	70	200	186	8	3	30	150	○	1.23
UC32- 5-22□	320	50	220	206	8	3	30	170	○	1.45
UC32-12-22□	320	120	220	206	8	3	30	170	○	1.88
UC32- 8-24□	320	80	240	226	8	3	30	190	○	1.76
UC35-13-26□	350	130	260	246	8	3	30	210	○	2.45
UC43- 5-28□	430	50	280	266	8	3	30	230	○	2.37
UC43-14-28□	430	140	280	266	8	3	30	230	○	3.05
UC 7- 8-14□	75	85	140	130	5	2.5	28	94	—	0.37
UC10-11-18□	100	110	180	166	8	3	30	130	—	0.72
UC12-14-22□	120	140	220	206	8	3	30	170	○	1.08
UC15-18-28□	150	180	280	266	8	3	30	230	○	1.74
UC18-21-34□	180	210	340	326	8	3.2	30	290	○	2.63

**UCC SERIES**

**MOUNTING PLATE for UC**

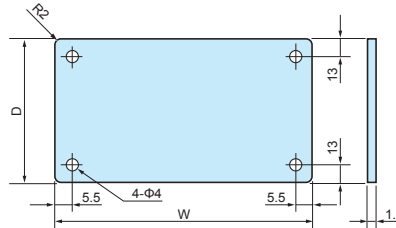
■ Drawings below are reference examples only.  
DXF/DWG/PDF drawings available on our website.

**Components**

Part name	Pcs	Material	Color / Finish
Mounting plate	1	Aluminium A1050P t=1.5	Unfinished
Screw	4	Steel M3-5	Trivalent chromate

■ See "Suitable cases" on the chart below for matching cases.

**Type A**

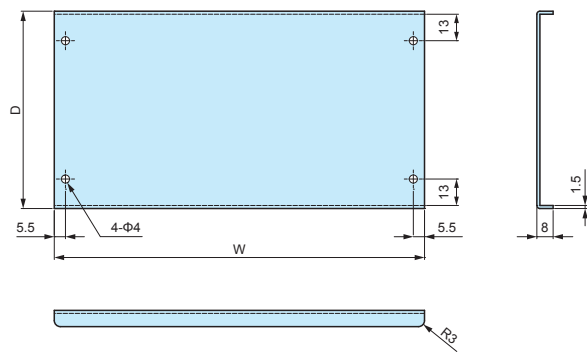
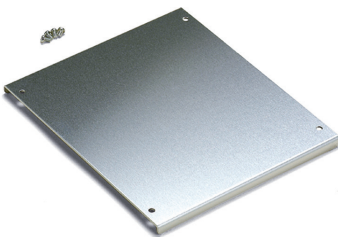


**Product no. / Dimensions (Type A)**

Product no.	Suitable cases	W	D
UCC 6- 8	UC 6- 3- 8	43	58
UCC 7-10	UC 7- 3-10	58	78
UCC 8- 6	UC 8- 3- 6	63	38
UCC11- 8	UC 11- 3- 8	93	58
	UC 11- 5- 8		
UCC 9-12	UC 9- 5-12	72	94
UCC10-14	UC 10- 4-14	82	94
UCC12-16	UC 12- 7-16	101	110
UCC13-18	UC 13- 4-18	111	130
UCC15-20	UC 15- 8-20	131	150
	UCG15- 9-20		

Product no.	Suitable cases	W	D
UCC14-10	UC 14- 4-10	123	78
	UC 14- 6-10		
UCC15-12	UC 15-10-12	132	94
UCC17-12	UC 17- 5-12	152	94
	UC 17- 7-12		
UCC 7-14	UC 7- 8-14	57	94
UCC10-18	UC 10-11-18	81	130
UCC12-22	UC 12-14-22	101	170
	UCY12-14-22		

**Type B**

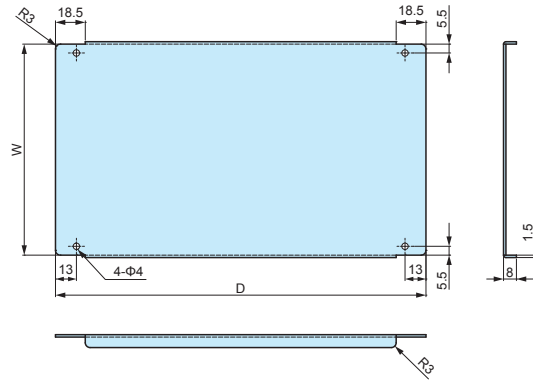


**Product no. / Dimensions (Type B)**

Product no.	Suitable cases	W	D
UCC16-22	UC 16- 5-22	146	173
UCC18-24	UC 18-10-24	161	193
	UCY18-10-24		
UCC20-14	UCG18-10-24	182	97
	UC 20- 5-14		
	UC 20- 8-14		
UCC22-26	UCG20- 9-14	201	213
	UC 22-12-26		
UCC20-16	UC 20-12-16	181	113
UCC26-18	UC 26- 5-18	241	133
	UC 26-10-18		
	UCG26-10-18		

Product no.	Suitable cases	W	D
UCC26-20	UC 26- 7-20	241	153
UCC32-22	UC 32- 5-22	301	173
	UCG32-12-22		
UCC32-24	UC 32- 8-24	301	193
UCC35-26	UC 35-13-26	331	213
UCC43-28	UC 43- 5-28	411	233
	UC 43-14-28		

Type C



**Product no. / Dimensions (Type C)**

Product no.	Suitable cases	W	D
UCC15-28	UC 15-18-28	134	230
	UCY15-18-28		
UCC18-34	UC 18-21-34	163.6	290
UCC24-34	UC 24-14-34	223.6	290

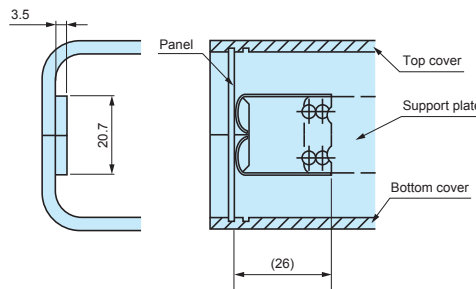
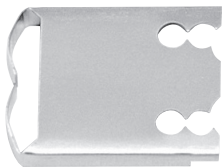
**UCF-26**

**PANEL RETAINER for UC**

- Use to minimize panel vibration.
- Possible to use with UCK-P mounting bracket.

**Installation drawings**

■ UCF-26 and the joint plate on UC case with screw fastening.

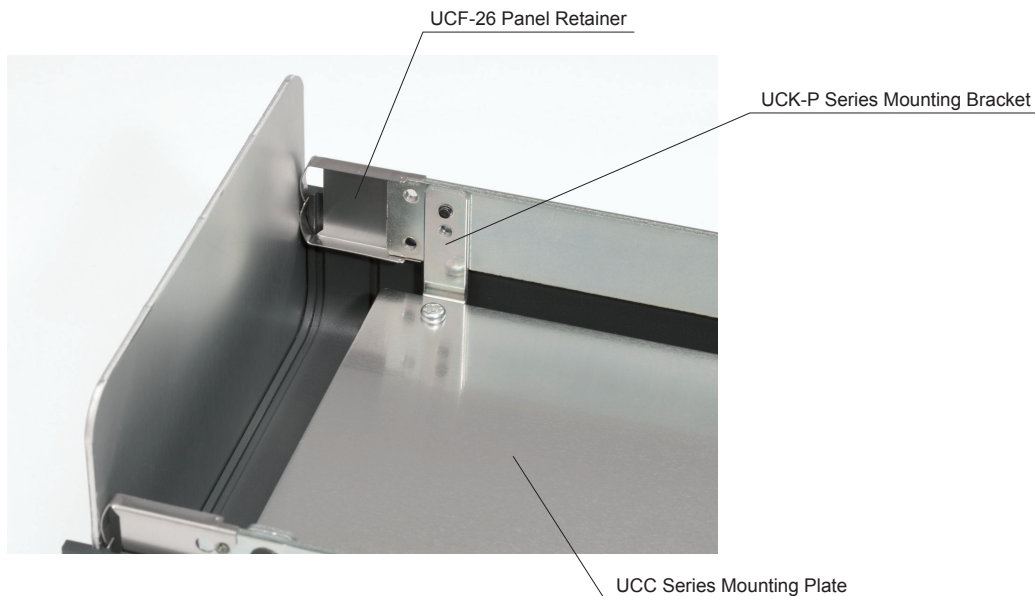


**Product no.**

Product no.	Material	Finish	Pack of
UCF-26	Stainless steel t=0.3	Unfinished	2

■ Not applicable for use on 60, 80, 100 and 120 "D" dimension cases.

**Installation Example**



**UCK-P SERIES**

**MOUNTING BRACKET for UC**



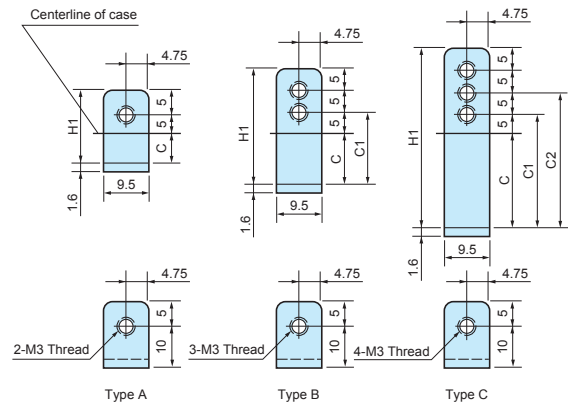
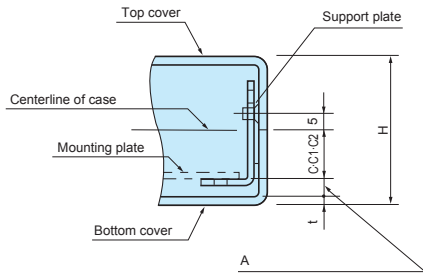
**Product no. / Dimensions**

Product no.	Type	H1	C	C1	C2	Pack of
UCK-P 13	A	13	3	—	—	4
UCK-P 17	A	17	7	—	—	4
UCK-P 27	B	27	12	17	—	4
UCK-P 42	C	42	22	27	32	4
UCK-P 57	C	57	37	42	47	4
UCK-P 72	C	72	52	57	62	4
UCK-P 87	C	87	67	72	77	4
UCK-P102	C	102	82	87	92	4

■ Screws are not included (screw set available with UC case)

■ Material / Finish : Steel SPCC t=1.6 / Trivalent chromate

■ Drawings below are reference examples only.  
DXF/DWG/PDF drawings available on our website.



■ Calculation formula for A dimension

(Case height (H) / 2) - (C, C1 or C2 + Bottom cover thickness) = A dimension.  
Use either C, C1 or C2 values from chart above.

**Bracket matching chart / A dimension**

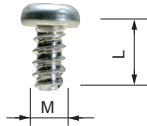
Product no. (Case)	Bracket no.	A
UC 6- 3- 8	UCK-P 13	12.5
	UCK-P 17	8.5
UC 7- 3-10	UCK-P 13	10
	UCK-P 17	6
UC 9- 5-12	UCK-P 17	15.5
	UCK-P 27	10.5   5.5
UC 10- 4-14	UCK-P 13	14.5
	UCK-P 17	10.5
	UCK-P 27	5.5
UC 12- 7-16	UCK-P 27	15
	UCK-P 42	10
UC 13- 4-18	UCK-P 13	14
	UCK-P 17	10
UC 15- 8-20	UCK-P 42	15   10   5
	UCK-P 13	19
UC 16- 5-22	UCK-P 17	15
	UCK-P 27	10
	UCK-P 57	19.8
UC 24-14-34	UCK-P 72	14.8   9.8
	UCK-P 13	10
UC 8- 3- 6	UCK-P 17	6
	UCK-P 13	10
UC 11- 3- 8	UCK-P 17	6
	UCK-P 13	10
UC 11- 5- 8	UCK-P 17	16
	UCK-P 27	11   6

Product no. (Case)	Bracket no.	A
UC 14- 4-10	UCK-P 13	15
	UCK-P 17	11
	UCK-P 27	6
UC 14- 6-10	UCK-P 27	16   11
	UCK-P 42	6
UCG 15- 9-20	UCK-P 42	10
	UCK-P 57	10
UC 15-10-12	UCK-P 42	20.5   15.5
	UCK-P 57	10.5   5.5
UC 17- 5-12	UCK-P 17	15.5
	UCK-P 27	10.5   5.5
UC 17- 7-12	UCK-P 27	15.5
	UCK-P 42	10.5   5.5
	UCK-P 17	15.5
UC 20- 5-14	UCK-P 13	19.5
	UCK-P 17	15.5
	UCK-P 27	10.5   5.5
UC 20- 8-14	UCK-P 27	20.5
	UCK-P 42	15.5   10.5
UCG 20- 9-14	UCK-P 42	5
	UCK-P 57	5
	UCK-P 17	15.5
UC 20-12-16	UCK-P 57	20   15   10
	UCK-P 13	19
	UCK-P 17	15
UC 26- 5-18	UCK-P 27	10
	UCK-P 42	20   15
UCG 26-10-18	UCK-P 57	10

Product no. (Case)	Bracket no.	A
UC 26- 7-20	UCK-P 27	15
	UCK-P 42	10
UC 18-10-24	UCK-P 42	20   15
	UCK-P 57	10
UCY 18-10-24	UCK-P 57	10
	UCK-P 57	20   15   10
UCG 18-10-24	UCK-P 57	20   15   10
	UCK-P 13	19
	UCK-P 17	15
UC 22-12-26	UCK-P 13	19
	UCK-P 17	15
	UCK-P 27	10
UC 32- 5-22	UCK-P 13	19
	UCK-P 17	15
UC 32-12-22	UCK-P 27	10
	UCK-P 57	20   15   10
	UCK-P 17	15
UCG 32-12-22	UCK-P 57	20   15   10
	UCK-P 42	15   10   5
UC 32- 8-24	UCK-P 42	15   10   5
	UCK-P 57	25   20   15
UC 35-13-26	UCK-P 72	10   5
	UCK-P 13	19
UC 43- 5-28	UCK-P 17	15
	UCK-P 27	10
	UCK-P 13	19
UC 43-14-28	UCK-P 57	20
	UCK-P 72	15   10
UC 7- 8-14	UCK-P 42	18   13   8
	UCK-P 57	15   10   5
UC 10-11-18	UCK-P 57	15   10   5
	UCK-P 72	15   10   5
UCY 12-14-22	UCK-P 72	15   10   5
	UCK-P 87	20   15   10
UC 15-18-28	UCK-P 87	20   15   10
	UCK-P 87	20   15   10
UCY 15-18-28	UCK-P 87	20   15   10
	UCK-P 87	20   15   10
UC 18-21-34	UCK-P 102	19.8   14.8   9.8

EM SERIES

PCB MOUNTING SCREW



- Self-tapping screws for mounting PCB on bosses or standoffs.
- EM-3-6 self-tapping screws are suitable for mounting 1.6mm or thicker PCB.

Product no. / Dimensions

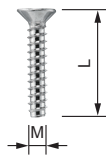
Product no.	M	L	Material	Finish	Suitable enclosures	Pack of
EM-1.6	1.6	4	Steel	Trivalent chromate	WC • CSS • CS • PS (M1.6 size)	50
EM-2	2	5	Steel	Trivalent chromate	PS • TW • TWN • TWF • WP (M2 size)	50
EM-2.3	2.3	6	Steel	Trivalent chromate	WH • LC • LCT • LCS • LCE • PFE WSC (Top cover bosses) PF • PFF (M2.3 size) TW • TWN • TWF (M2.3 size) WP (M2.3 size)	50
<b>NEW</b> EM-2.3-8	2.3	8	Steel	Trivalent chromate	WSC (Bottom base bosses)	50
EM-2.6	2.6	6	Steel	Trivalent chromate	PF • PFF • WP (M2.6 size)	50
EM-3	3	5	Steel	Trivalent chromate	SU TWS • TW • TWN • TWF (M3 sizes)	50
EM-3-6	3	6	Steel	Trivalent chromate		50

MR SERIES

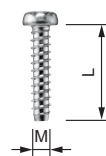
TORX SCREW



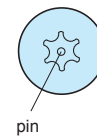
Countersunk head



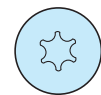
Pan head



With pin



★ Without pin



★ : MR1.6-6S, MR-2S, MR2.6-10□, and MR3-14□ are without pin.

Product no. / Dimensions

★Mark = Without pin

Product no.	M	L	head no.	Head style	Material	Finish	Suitable enclosures	Pack of
MR1.6-6S★	1.6	6	T3	Pan	Steel	Nickel plated	CS • CSS	20
MR2.5-8PS	2.5	8	T8	Pan	Steel	Nickel plated	PF • PFE • PFF (M2.5 size)	20
MR2.6-10S★	2.6	10	T8	Countersunk	Steel	Nickel plated	TW • TWN (M2.6 models) TWF (M2.6 models)	20
MR2.6-10B★	2.6	10	T8	Countersunk	Steel	Black trivalent chromate	MX • MXA • MXB • MXF (M2.6 models)	20
MR2.6-12PS	2.6	12	T8	Pan	Steel	Nickel plated	LCT • LCS • LC115-F2 / F3 LCT • LCS • LC145S-F6	20
MR2.6-14PS	2.6	14	T8	Pan	Steel	Nickel plated	LCT • LCS • LC115H-F2 / F3 / M2 / 9V LCT • LCS • LC135-F4 / M2 / M3 / 9V LCT • LCS • LC135H-F4 / M2 / M3 / 9V LCT • LCS • LC145-F6 / M2 / M4 LCT • LCS • LC145H-F6 / M2 / M4 LCT • LCS • LC165-M4 LCT • LCS • LC165H-M4	20
MR2.6-14S	2.6	14	T8	Countersunk	Steel	Nickel plated	LCT • LCS • LC115-N / F2 / F3 LCT • LCS • LC145S-F6 / 145S-N LCE115-N TW • TWN7-2-11 / 7-4-11 / 7-5-11 TWF7-2-11 / 7-4-11 / 7-5-11 / 8-2-8 / 8-4-8	20
MR2.6-18S	2.6	18	T8	Countersunk	Steel	Nickel plated	LCT • LCS • LC115H-N / F2 / F3 / M2 / 9V LCT • LCS • LC135-N / F4 / M2 / M3 / 9V LCT • LCS • LC135H-N / F4 / M2 / M3 / 9V LCT • LCS • LC145-N / F6 / M2 / M4 LCT • LCS • LC145H-N / F6 / M2 / M4 LCT • LCS • LC165-N / M4 LCT • LCS • LC165H-N / M4 LCE115H-N • LCE135-N • LCE145H-N • LCE165H-N	20
MR3-8PS	3	8	T10	Pan	Steel	Nickel plated	PF • PFE • PFF (M3 size)	20
MR3-14S★	3	14	T10	Countersunk	Steel	Nickel plated	TW • TWN (M3 models)	20
MR3-14B★	3	14	T10	Countersunk	Steel	Black trivalent chromate	TWF (M3 models) MX • MXA • MXB • MXF (M3 models)	20
MR-1S	3	5	T10	Countersunk	Steel	Nickel plated	UC	20
MR-1B	3	5	T10	Countersunk	Steel	Black trivalent chromate	UC • UCY • US	20
MR-2S	3	10	T10	Countersunk	Steel	Nickel plated	HEN	20



## AFS•AFM SERIES

## ALUMINIUM ISOLATION FEET



- The surface treatment and finish allows the feet to exhibit a polished and luxurious feel.
- Non-slip NBR O-ring is present on the underside of the feet.
- Suitable for use in audio devices.

### Available in both internal and external screw installation type.

#### External type / Shot blast finish (AFS series)



The external type is secured via screws from the underside / base of the feet to the enclosure. A thread hole is required for direct securing, while a circular hole is required for lock nut securing.

The shot blast finish provides a high quality surface finish look, and pairing well with various types of enclosure surfaces.

Available in both silver and black.

#### Internal type / Reflective finish (AFM series)



The internal type is secured via screws from the inside of the enclosure. A circular hole is required for securing into the pre-made threads in the top-side of the feet.

The reflective surface finish adds a high quality touch to the unit, allow it to have a luxurious look.

Available only in Silver.

Accessories (Optional parts)

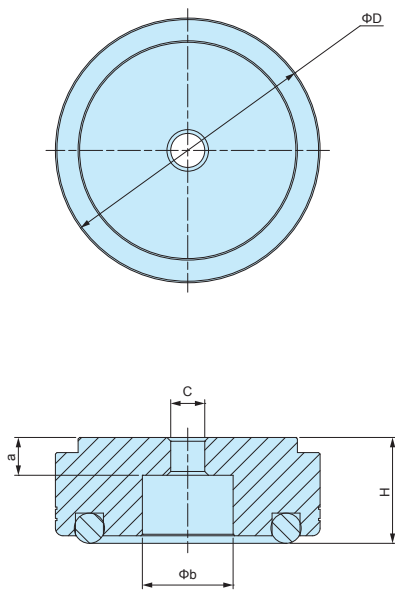
Product no. / Dimensions

Product no.		D	H	Installation type	C	a	b	Pack of
● Silver	● Black							
AFS20- 8S	AFS20- 8B	20	8	Internal	Φ3.4	3	9	4
AFS25-10S	AFS25-10B	25	10	Internal	Φ4.5	4	12	4
AFS30-12S	AFS30-12B	30	12	Internal	Φ4.5	5	12	4
AFS35-14S	AFS35-14B	35	14	Internal	Φ4.5	5	12	4
AFS39-16S	AFS39-16B	39	16	Internal	Φ4.5	5	15	4
AFS44-18S	AFS44-18B	44	18	Internal	Φ4.5	5	20	4
AFS55-20S	AFS55-20B	55	20	Internal	Φ5.5	5	20	4
AFM15- 7S	-	15	7	External	M3	4	-	4
AFM20- 9S	-	20	9	External	M3	5	-	4
AFM25-12S	-	25	12	External	M4	7	-	4
AFM30-14S	-	30	14	External	M4	8	-	4
AFM35-16S	-	35	16	External	M4	10	-	4
AFM39-18S	-	39	18	External	M4	10	-	4
AFM44-20S	-	44	20	External	M4	10	-	4
AFM55-22S	-	55	22	External	M5	15	-	4

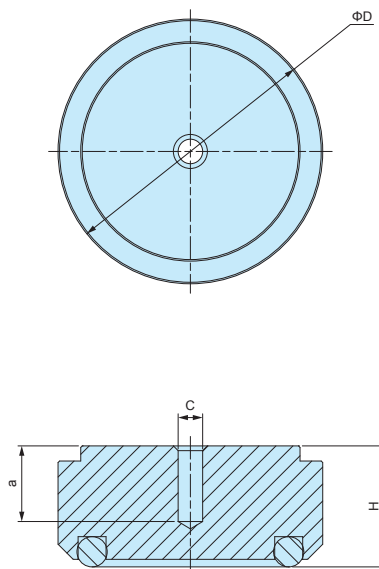
AFS • AFM dimensions

■ Drawings below are reference examples only.  
DXF/DWG/PDF drawings available on our website.

AFS SERIES



AFM SERIES



APPLICATION EXAMPLE





TLW SERIES

TILT LEG



APPLICATION EXAMPLE

Technical Data
Max load : 7kg

- New tilt leg with eye catching colors and rounded design.
- Non-slip design with Elastomer (TPE) pad.
- Available in 3 different color patterns.

Components

No.	Part name	Pcs	Material	Color / Finish
1	Front foot	2	PC+ABS UL94V-0, TPE	Black & Black • Navy & Gray • Light gray & Gray
2	Rear foot	2	PC+ABS UL94V-0, TPE	Black & Black • Navy & Gray • Light gray & Gray
-	Washer head screw	4	Steel M3-6	Black trivalent chromate
-	Nut	4	Steel M3	Black trivalent chromate

Product no.

Product no.	Color (plastic)	Color (TPE)
<b>NEW</b> TLW-46BB	Black	Black
<b>NEW</b> TLW-46NG	Navy	Gray
<b>NEW</b> TLW-46LG	Light gray	Gray

- TLW tilt leg can be used in various applications.

