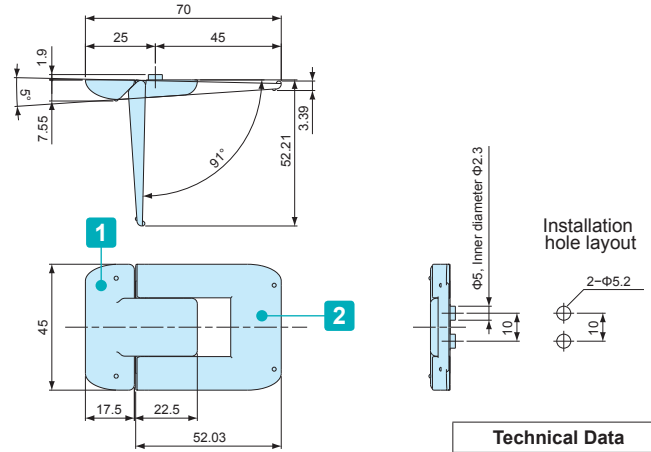
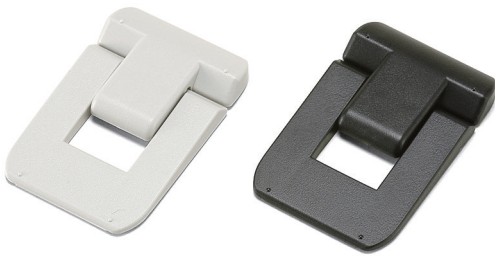


TI SERIES

TILT STAND



Technical Data

Max load : 3kg

Components

No.	Part name	Pcs	Material	Color / Finish
1	Body	1	ABS UL94HB	Black • Light gray
2	Leg	1	ABS UL94HB	Black • Light gray
—	Screw (M3-6 Pan head tapping)	2	Steel	Trivalent chromate

Product no.

Product no.	
● Black	● Light Gray
TI-70B	TI-70S



Installation Example