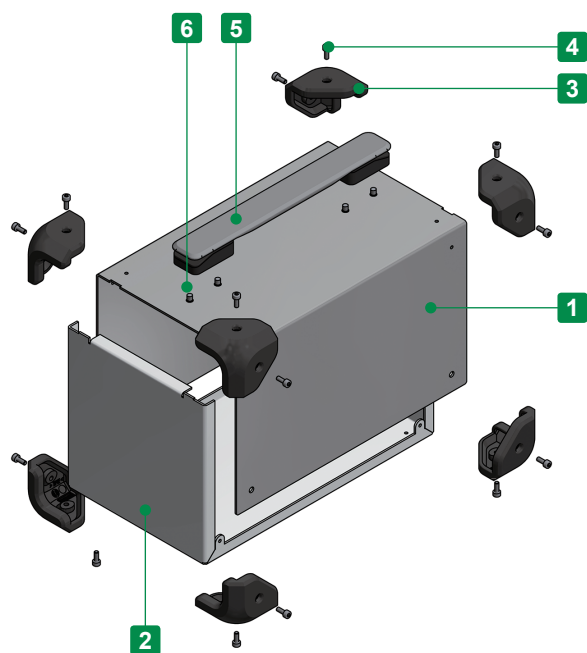
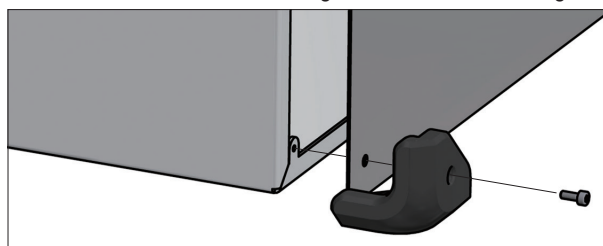




Conductive



- Adjustable sizes available in 1mm intervals, with W dimension from 150 ~ 500mm, D dimension from 150 ~ 400mm, and H dimension from 80 ~ 250mm.
- Custom sized stainless steel case with shockproof and anti-slip elastomer corner guards.
- Corner guards are available in 4 different color variations.
- Customizable with, and without carrying handles.
- SUS304 stainless steel allows the enclosure to be conductive.
- Stainless steel case and corner guard with screw fastening.



Components

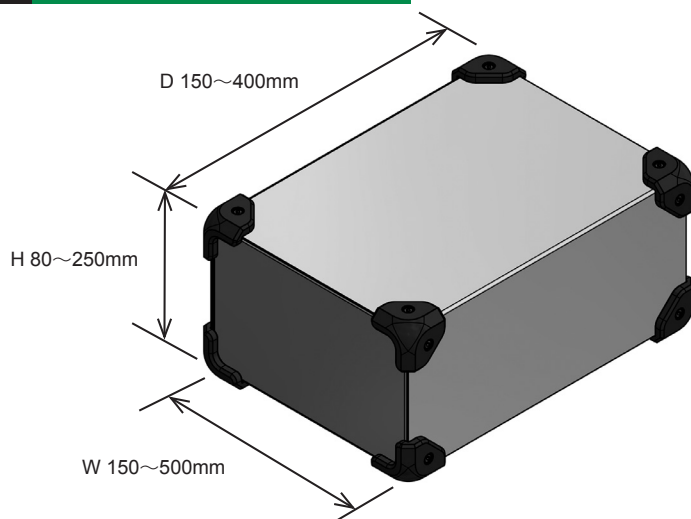
No.	Part name	Pcs	Material	Color / Finish
1	Top Cover	1	Stainless steel SUS304	Bright annealed (BA)
2	Base	1	Stainless steel SUS304	Bright annealed (BA)
3	Corner guard	8	TPE	Black • Gray • Navy • Red
4	Case / Corner guard screw (Hexagonal M4-8)	16 / 18 / 20	Stainless steel	Unfinished
5	Carrying handle	1	PU • PA6 • ABS • Steel	Black • Gray
6	Carrying handle screw (M5-8)	4	Steel	Trivalent chromate

■ Hexagonal wrench included.

■ No. 5 and 6 are available for carrying handle types only.

1 Specify Dimensions

Specify dimensions in 1mm intervals.



Caution

- W, H and D dimensions are external dimensions of stainless steel case only.
(Exclude corner guard dimensions)
- Refer to the chart on page MCGS-3 for available dimensions.
- Carrying handle is set to the center of top face.
(Carrying handle is not available for D length of 224mm and smaller.)

2 Select Color Type

Code	B Black	G Gray	N Navy	R Red
Color				

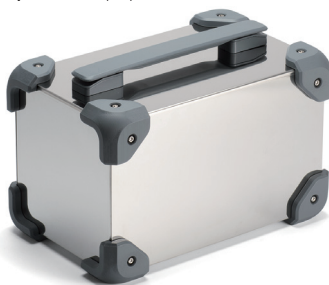
3 Select Handle Type

- Carrying handle model is not available for D length of 224mm and smaller.

Black handle [B]



Gray handle [G]



No handle [N]



Confirm Product No.

Confirm an assigned product number in the following order format as below.

Product no. MCGS

- - -
 W H D Color code Handle Type

Example : W = 222 mm, H = 111 mm, D = 333 mm, Red color Corner Guard with Black handle

MCGS 222 - 111 - 333 R - B

Lead time

Custom Size Only
Custom Size + Hole Milling

9 business days (1 ~ 10 pcs)
10 business days (1 ~ 10 pcs)

Order Inquiry

For more information, contact us here at sales@takachi-el.co.jp

MCGS Size Chart

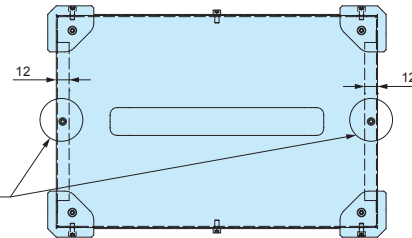
Refer to the below chart for available sizes.

■ [—] sizes are not available.

■ Models with carrying handle, and W dimension of 200mm or larger requires 2 additional screws for assembly.

W	H	D	16 screw fixing points						18 screw fixing points			
			150~174	175~199	200~224	225~249	250~274	275~299	300~324	325~349	350~374	375~400
150~199	80~99	100~124	○	○	○	○	○	○	○	○	○	○
		125~149	○	○	○	○	○	○	○	○	○	○
200~249	80~99	100~124	○	○	○	○	○	○	○	○	○	○
		125~149	○	○	○	○	○	○	○	○	○	○
		150~174	—	—	○	○	○	○	○	○	○	○
		175~199	—	—	—	○	○	○	○	○	○	○
250~299	80~99	100~124	○	○	○	○	○	○	○	○	○	○
		125~149	○	○	○	○	○	○	○	○	○	○
		150~174	—	—	○	○	○	○	○	○	○	○
		175~199	—	—	—	○	○	○	○	○	○	○
		200~224	—	—	—	—	○	○	○	○	○	○
		225~250	—	—	—	—	—	○	○	○	○	○
300~349	80~99	100~124	○	○	○	○	○	○	○	○	○	○
		125~149	○	○	○	○	○	○	○	○	○	○
		150~174	—	—	○	○	○	○	○	○	○	○
		175~199	—	—	—	○	○	○	○	○	○	○
		200~224	—	—	—	—	○	○	○	○	○	○
		225~250	—	—	—	—	—	○	○	○	○	○
		275~299	—	—	—	—	—	○	○	○	○	○
350~399	80~99	100~124	○	○	○	○	○	○	○	○	○	○
		125~149	○	○	○	○	○	○	○	○	○	○
		150~174	—	—	○	○	○	○	○	○	○	○
		175~199	—	—	—	○	○	○	○	○	○	○
		200~224	—	—	—	—	○	○	○	○	○	○
		225~250	—	—	—	—	—	○	○	○	○	○
		275~299	—	—	—	—	—	○	○	○	○	○
400~449	80~99	100~124	○	○	○	○	○	○	○	○	○	○
		125~149	○	○	○	○	○	○	○	○	○	○
		150~174	—	—	○	○	○	○	○	○	○	○
		175~199	—	—	—	○	○	○	○	○	○	○
		200~224	—	—	—	—	○	○	○	○	○	○
		225~250	—	—	—	—	—	○	○	○	○	○
		275~299	—	—	—	—	—	○	○	○	○	○
450~500	80~99	100~124	○	○	○	○	○	○	○	○	○	○
		125~149	○	○	○	○	○	○	○	○	○	○
		150~174	—	—	○	○	○	○	○	○	○	○
		175~199	—	—	—	○	○	○	○	○	○	○
		200~224	—	—	—	—	○	○	○	○	○	○
		225~250	—	—	—	—	—	○	○	○	○	○
		275~299	—	—	—	—	—	○	○	○	○	○

■ Carrying handle model is not available for D length of 224mm and smaller.

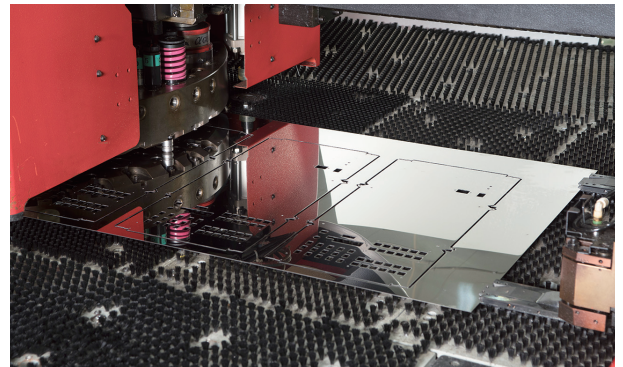


Technical drawing of a rectangular plate with the following dimensions and features:

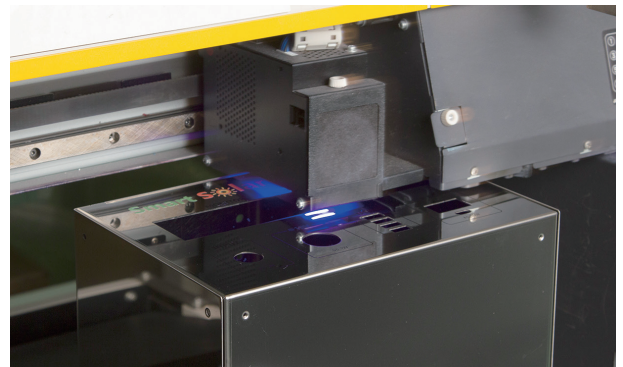
- Overall width: 200
- Overall height: 100
- Top flange width: 43
- Bottom flange width: 10
- Central hole diameter: $\varnothing 70\text{mm}$
- Distance from bottom edge to center of hole: 12
- Distance from left edge to center of hole: $D - 150 \sim 400\text{mm}$
- Overall distance from left edge to center of hole: $D + 16$

CUSTOMIZATION EXAMPLE

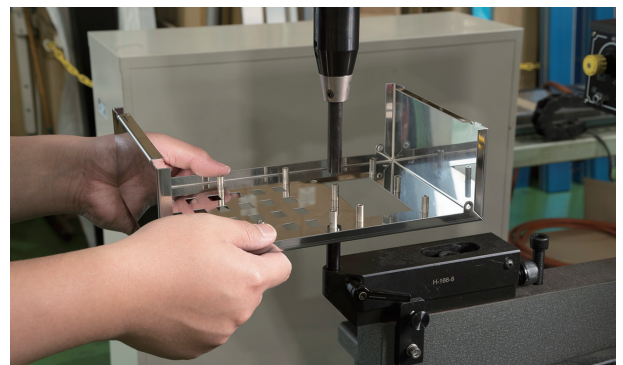
PUNCH PRESS



INKJET PRINTING



SELF CLINCHING STANDOFF

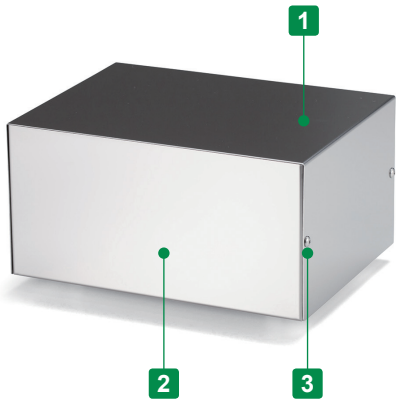


MBS SERIES

CUSTOM SIZED STAINLESS STEEL ENCLOSURE



- Adjustable sizes available in 1mm intervals, with W dimensions from 50 ~ 500mm, D dimensions from 50 ~ 500mm, and H dimensions from 20 ~ 250mm.
- SUS304 stainless steel allows the enclosure to be conductive.



CUSTOMIZED EXAMPLE

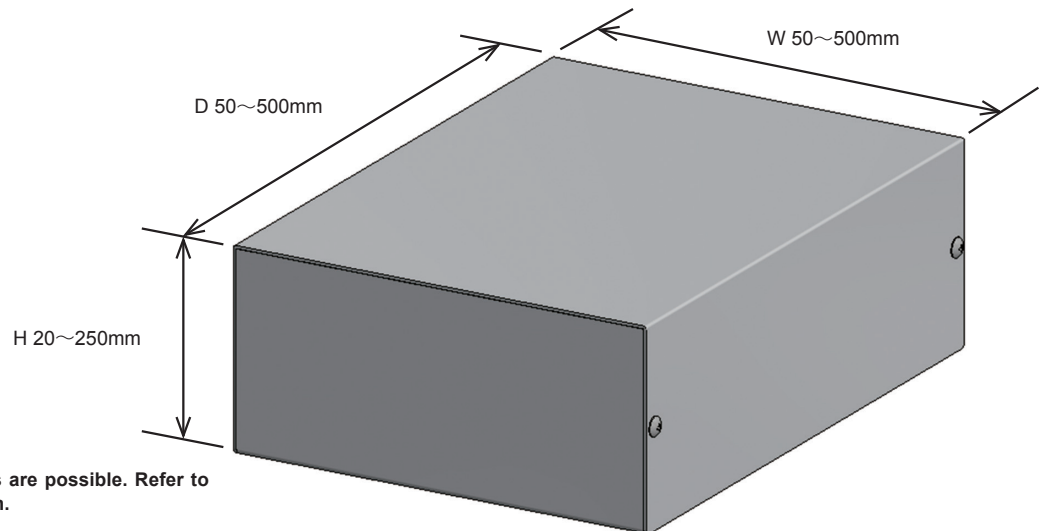


Components

No.	Part name	Pcs	Material	Color / Finish
1	Cover	1	Stainless steel SUS304	Bright annealed (BA)
2	Base	1	Stainless steel SUS304	Bright annealed (BA)
3	Screw (Truss M3-5)	4 or 6	Stainless steel	Unfinished

1 Specify Dimensions

Specify dimensions in 1mm intervals.



Caution : Not all size combinations are possible. Refer to chart for more information.

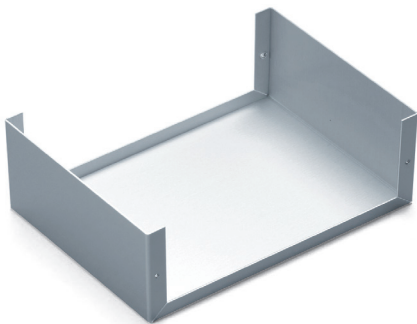
■ Panel thickness and base types vary by W / H / D dimensions.

Refer to the chart on page MBS-3 for A08, B10 or B12 type selection by W, H & D dimensions.

Base Type A

[A08] Type

W : 200 • H : 100 • D : 500 or smaller
Type A : Standard • Panel thickness : 0.8mm



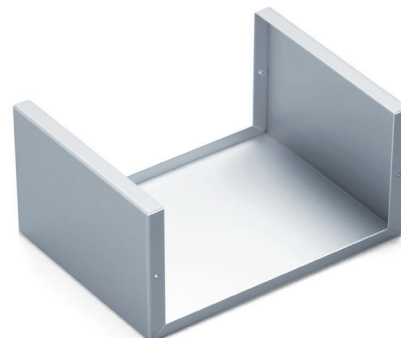
Base Type B

[B10] Type

W : 300 • H : 225 • D : 400 or smaller
Type B : Reinforced • Panel thickness : 1.0mm

[B12] Type

W : 500 • H : 250 • D : 500 or smaller
Type B : Reinforced • Panel thickness : 1.2mm



Confirm Product No.

Confirm an assigned product number in the following order format as below.

Product no. MBS

122	-	70	-	130		A		08
W		H		D		Base type		Panel thickness

Example : W = 122 mm, H = 70 mm, D = 130 mm, A base type in panel thickness of 0.8mm.

Lead time

Custom Size Only
Custom Size + Hole Milling

9 business days (1 ~ 3 pcs)
10 business days (1 ~ 3 pcs)

Order Inquiry

For more information, contact us here at sales@takachi-el.co.jp

MBS Type Chart

Refer to the below chart for A08, B10 or B12 type selection by W, H & D dimensions.

[A08] Type

Standard • Panel thickness : 0.8mm

[B10] Type

Reinforced • Panel thickness : 1.0mm

[B12] Type

Reinforced • Panel thickness : 1.2mm

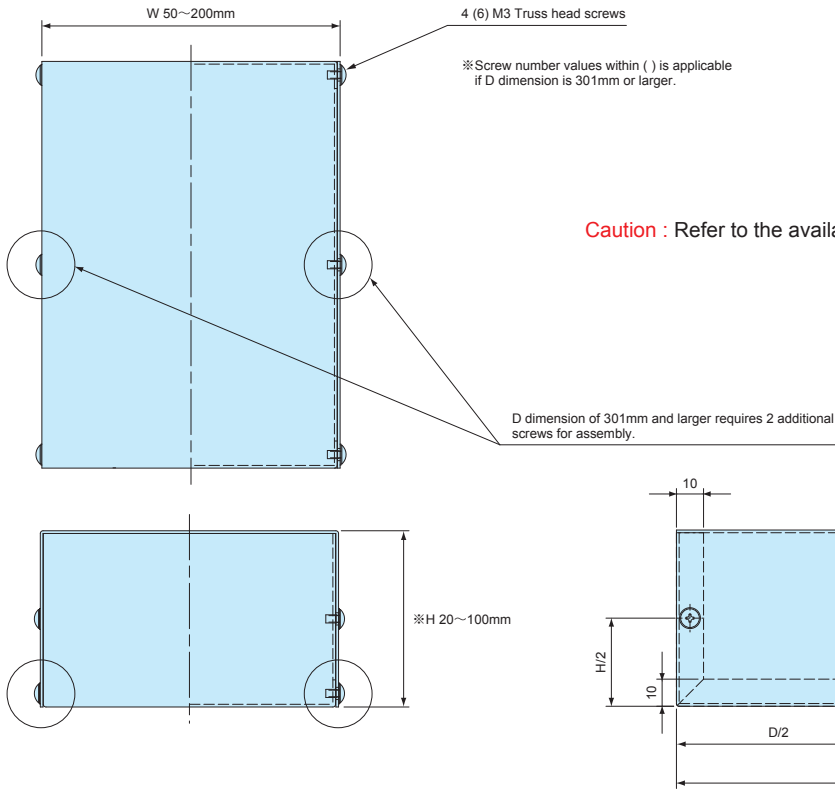
■ [—] sizes are not available.

W	H	D	4 screw fixing points										6 screw fixing points							
			50~79	80~99	100~125	126~150	151~175	176~200	201~225	226~250	251~275	276~300	301~325	326~350	351~375	376~400	401~425	426~450	451~475	476~500
50~99	20~35	20~35	A08	A08	A08	A08	A08	A08	A08	A08	A08	A08	A08	A08	A08	A08	A08	A08	A08	A08
		36~50	—	A08	A08	A08	A08	A08	A08	A08	A08	A08	B10	B10	B10	B10	B12	B12	B12	B12
100~150	20~50	20~50	A08	A08	A08	A08	A08	A08	B10	B10	B10	B10	B12	B12	B12	B12	B12	B12	B12	B12
		51~75	—	—	A08	A08	A08	A08	B10	B10	B10	B10	B12	B12	B12	B12	B12	B12	B12	B12
		76~100	—	—	—	A08	A08	A08	B10	B10	B10	B10	B12	B12	B12	B12	B12	B12	B12	B12
151~200	20~50	20~50	—	A08	A08	A08	A08	A08	B10	B10	B10	B10	B12	B12	B12	B12	B12	B12	B12	B12
		51~75	—	—	A08	A08	A08	A08	B10	B10	B10	B10	B12	B12	B12	B12	B12	B12	B12	B12
		76~100	—	—	—	B10	B10	B10	B10	B10	B10	B10	B12	B12	B12	B12	B12	B12	B12	B12
		101~125	—	—	—	—	B10	B10	B10	B10	B10	B10	B12	B12	B12	B12	B12	B12	B12	B12
		126~150	—	—	—	—	—	B10	B10	B10	B10	B10	B12	B12	B12	B12	B12	B12	B12	B12
201~250	20~50	20~50	—	B10	B10	B10	B10	B10	B10	B10	B10	B10	B12	B12	B12	B12	B12	B12	B12	B12
		51~75	—	—	B10	B10	B10	B10	B10	B10	B10	B10	B12	B12	B12	B12	B12	B12	B12	B12
		76~100	—	—	—	B10	B10	B10	B10	B10	B10	B10	B12	B12	B12	B12	B12	B12	B12	B12
		101~125	—	—	—	—	B10	B10	B10	B10	B10	B10	B12	B12	B12	B12	B12	B12	B12	B12
		126~150	—	—	—	—	—	B10	B10	B10	B10	B10	B12	B12	B12	B12	B12	B12	B12	B12
		151~175	—	—	—	—	—	—	B10	B10	B10	B10	B12	B12	B12	B12	B12	B12	B12	B12
251~300	20~50	20~50	—	—	—	—	—	—	—	B10	B10	B10	B12	B12	B12	B12	B12	B12	B12	B12
		51~75	—	—	B10	B10	B10	B10	B10	B10	B10	B10	B12	B12	B12	B12	B12	B12	B12	B12
		76~100	—	—	—	B10	B10	B10	B10	B10	B10	B10	B12	B12	B12	B12	B12	B12	B12	B12
		101~125	—	—	—	—	B10	B10	B10	B10	B10	B10	B12	B12	B12	B12	B12	B12	B12	B12
		126~150	—	—	—	—	—	B10	B10	B10	B10	B10	B12	B12	B12	B12	B12	B12	B12	B12
		151~175	—	—	—	—	—	—	B10	B10	B10	B10	B12	B12	B12	B12	B12	B12	B12	B12
		176~200	—	—	—	—	—	—	—	B10	B10	B10	B12	B12	B12	B12	B12	B12	B12	B12
301~350	20~50	20~50	—	—	—	—	—	—	—	—	B10	B10	B12	B12	B12	B12	B12	B12	B12	B12
		51~75	—	—	—	B12	B12	B12	B12	B12	B12	B12	B12	B12	B12	B12	B12	B12	B12	B12
		76~100	—	—	—	—	B12	B12	B12	B12	B12	B12	B12	B12	B12	B12	B12	B12	B12	B12
		101~125	—	—	—	—	B12	B12	B12	B12	B12	B12	B12	B12	B12	B12	B12	B12	B12	B12
		126~150	—	—	—	—	—	B12	B12	B12	B12	B12	B12	B12	B12	B12	B12	B12	B12	B12
		151~175	—	—	—	—	—	—	B12	B12	B12	B12	B12	B12	B12	B12	B12	B12	B12	B12
		176~200	—	—	—	—	—	—	—	B12	B12	B12	B12	B12	B12	B12	B12	B12	B12	B12
		201~225	—	—	—	—	—	—	—	—	B12	B12	B12	B12	B12	B12	B12	B12	B12	B12
351~400	20~50	20~50	—	—	—	—	—	—	—	—	—	—	B12	B12	B12	B12	B12	B12	B12	B12
		51~75	—	—	—	B12	B12	B12	B12	B12	B12	B12	B12	B12	B12	B12	B12	B12	B12	B12
		76~100	—	—	—	—	B12	B12	B12	B12	B12	B12	B12	B12	B12	B12	B12	B12	B12	B12
		101~125	—	—	—	—	B12	B12	B12	B12	B12	B12	B12	B12	B12	B12	B12	B12	B12	B12
		126~150	—	—	—	—	—	B12	B12	B12	B12	B12	B12	B12	B12	B12	B12	B12	B12	B12
		151~175	—	—	—	—	—	—	B12	B12	B12	B12	B12	B12	B12	B12	B12	B12	B12	B12
		176~200	—	—	—	—	—	—	—	B12	B12	B12	B12	B12	B12	B12	B12	B12	B12	B12
		201~225	—	—	—	—	—	—	—	—	B12	B12	B12	B12	B12	B12	B12	B12	B12	B12
		226~250	—	—	—	—	—	—	—	—	—	B12	B12	B12	B12	B12	B12	B12	B12	B12
401~450	20~50	20~50	—	—	—	B12	B12	B12	B12	B12	B12	B12	B12	B12	B12	B12	B12	B12	B12	B12
		51~75	—	—	—	B12	B12	B12	B12	B12	B12	B12	B12	B12	B12	B12	B12	B12	B12	B12
		76~100	—	—	—	—	B12	B12	B12	B12	B12	B12	B12	B12	B12	B12	B12	B12	B12	B12
		101~125	—	—	—	—	B12	B12	B12	B12	B12	B12	B12	B12	B12	B12	B12	B12	B12	B12
		126~150	—	—	—	—	—	B12	B12	B12	B12	B12	B12	B12	B12	B12	B12	B12	B12	B12
		151~175	—	—	—	—	—	—	B12	B12	B12	B12	B12	B12	B12	B12	B12	B12	B12	B12
		176~200	—	—	—	—	—	—	—	B12	B12	B12	B12	B12	B12	B12	B12	B12	B12	B12
		201~225	—	—	—	—	—	—	—	—	B12	B12	B12	B12	B12	B12	B12	B12	B12	B12
451~500	20~50	20~50	—	—	—	B12	B12	B12	B12	B12	B12	B12	B12	B12	B12	B12	B12	B12	B12	B12
		51~75	—	—	—	B12	B12	B12	B12	B12	B12	B12	B12	B12	B12	B12	B12	B12	B12	B12
		76~100	—	—	—	—	B12	B12	B12	B12	B12	B12	B12	B12	B12	B12	B12	B12	B12	B12
		101~125	—	—	—	—	B12	B12	B12	B12	B12	B12	B12	B12	B12	B12	B12	B12	B12	B12
		126~150	—	—	—	—	—	B12	B12	B12	B12	B12	B12	B12	B12	B12	B12	B12	B12	B12
		151~175	—	—	—	—	—	—	B12	B12	B12	B12	B12	B12	B12	B12	B12	B12	B12	B12
		176~200	—	—	—	—	—	—	—	B12	B12	B12	B12	B12	B12	B12	B12	B12	B12	B12
		201~225	—	—	—	—	—	—	—	—	B12	B12	B12	B12	B12	B12	B12	B12	B12	B12
	226~250	226~250	—	—	—	—	—	—	—	—	—	B12	B12	B12	B12	B12	B12	B12	B12	B12

MBS dimensions

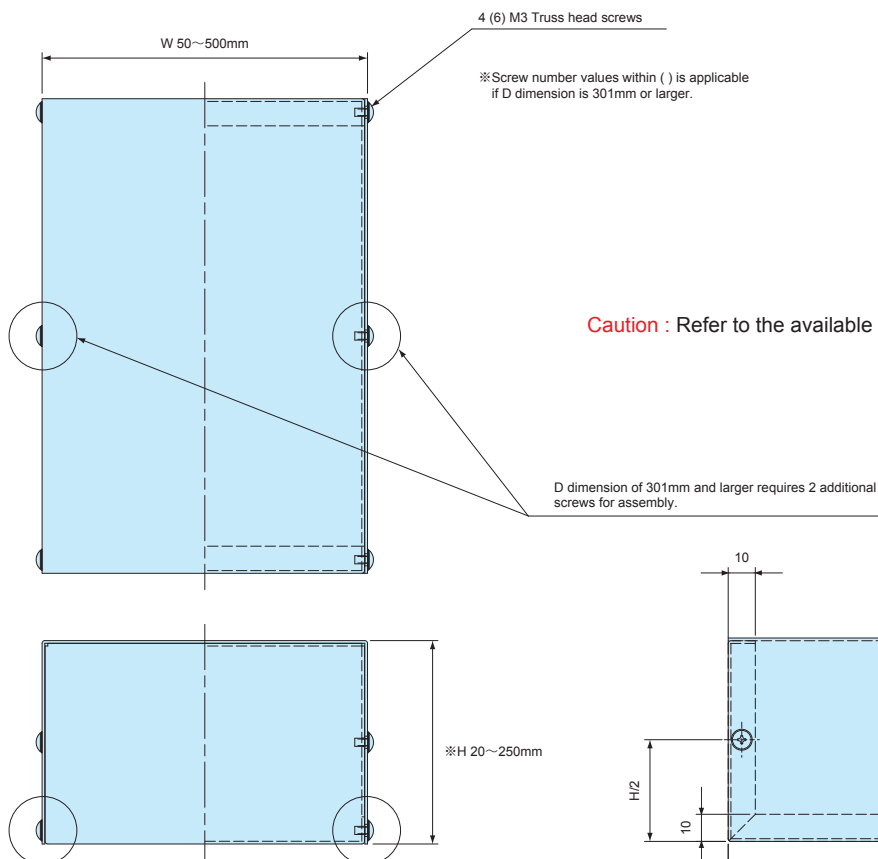
[A08] Type

Standard • Panel thickness : 0.8mm



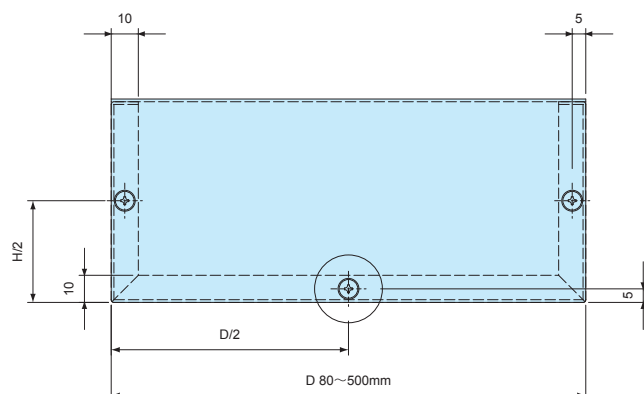
[B10] Type

Reinforced • Panel thickness : 1.0mm



[B12] Type

Reinforced • Panel thickness : 1.2mm



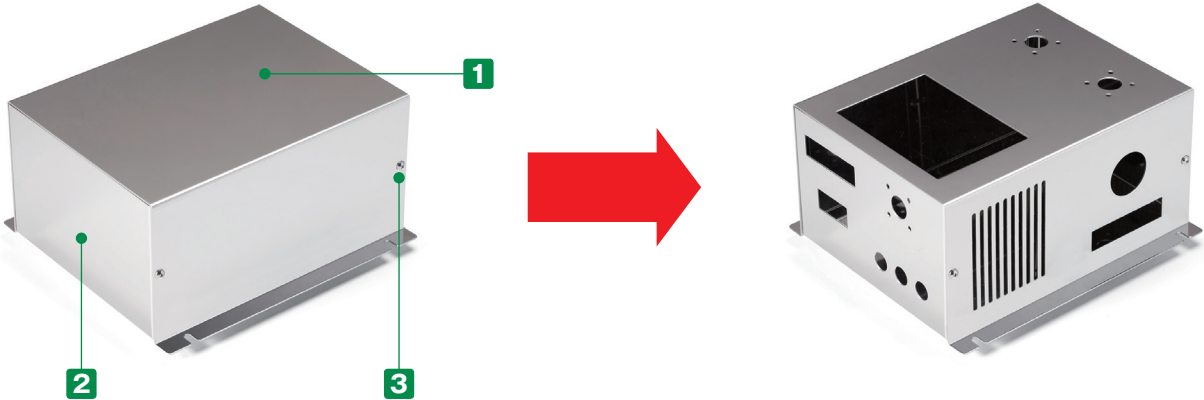
MBSF SERIES

CUSTOM SIZED FLANGED STAINLESS STEEL ENCLOSURE



- Adjustable sizes available in 1mm intervals, with W dimensions from 50 ~ 500mm, D dimensions from 50 ~ 400mm, and H dimensions from 20 ~ 250mm.
- Wall mount flange holes available in 2 models: 2-hole, and 4-hole types.
- SUS304 stainless steel allows the enclosure to be conductive.

CUSTOMIZED EXAMPLE

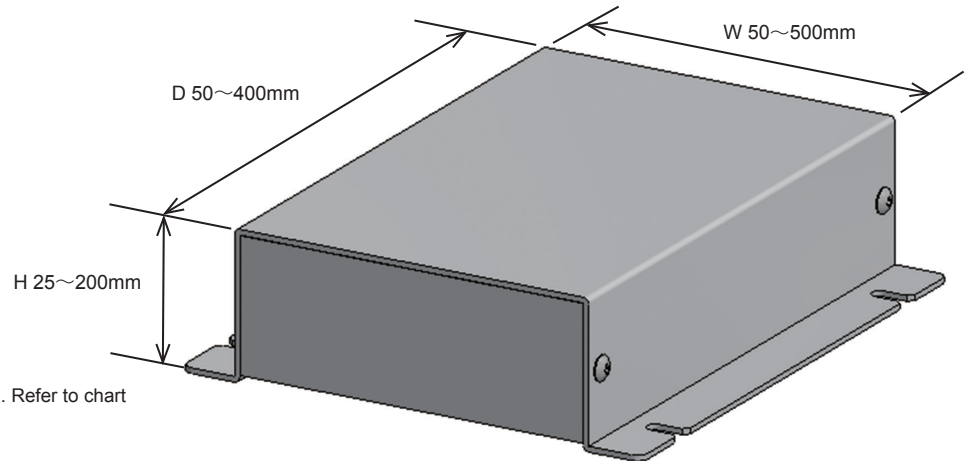


Components

No.	Part name	Pcs	Material	Color / Finish
1	Cover	1	Stainless steel SUS304	Bright annealed (BA)
2	Base	1	Stainless steel SUS304	Bright annealed (BA)
3	Screw (Truss M3-5)	4 or 6	Stainless steel	Unfinished

1 Specify Dimensions

Specify dimensions in 1mm intervals.



Caution : Not all size combinations are possible. Refer to chart for more information.

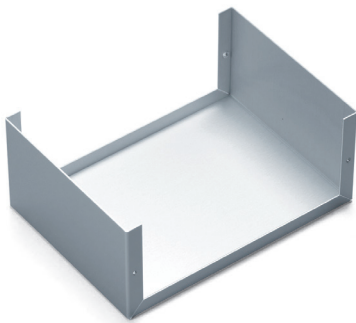
■ Panel thickness and base types vary by W / H / D dimensions.

Refer to the chart on page MBS-3 for A08, B10 or B12 type selection by W, H & D dimensions.

Base Type A

[A10] Type

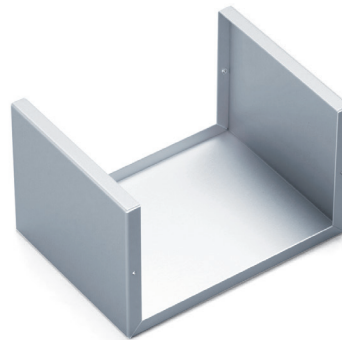
W : 200 • H : 100 • D : 400 or smaller
Type A : Standard • Panel thickness : 1.0mm



Base Type B

[B10] Type

W : 300 • H : 200 • D : 400 or smaller
Type B : Reinforced • Panel thickness : 1.0mm



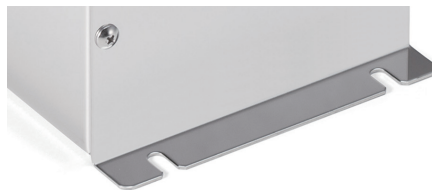
[B12] Type

W : 500 • H : 200 • D : 400 or smaller
Type B : Reinforced • Panel thickness : 1.2mm

2 Select Flange-hole Type



2 (1 on each side)



4 (2 on each side)

Confirm Product No.

Confirm an assigned product number in the following order format as below.

Product no. MBSF

155

W

80

H

200

D

A

Base type

10

Panel thickness

4

Flange hole

Example : W = 155 mm, H = 80 mm, D = 200 mm, A base type in panel thickness of 1.0mm, 4 flange holes

Lead time

Custom Size Only

9 business days (1 ~ 3 pcs)

Custom Size + Hole Milling

10 business days (1 ~ 3 pcs)

Order Inquiry

For more information, contact us here at sales@takachi-el.co.jp

MBSF Type Chart

Refer to the below chart for A10, B10 or B12 type selection by W, H & D dimensions.

[A10]Type

Standard • Panel thickness : 1.0mm

[B10]Type

Reinforced • Panel thickness : 1.0mm

[B12]Type

Reinforced • Panel thickness : 1.2mm

■ [—] sizes are not available.

W	H	D	4x fixing screw points										6x fixing screw points			
			50~74	75~99	100~125	126~150	151~175	176~200	201~225	226~250	251~275	276~300	301~325	326~350	351~375	376~400
50~99	25~35	25~35	A10	A10	A10	A10	A10	A10	A10	A10	A10	A10	A10	A10	A10	A10
		36~50	—	A10	A10	A10	A10	A10	A10	A10	A10	A10	B10	B10	B10	B10
100~150	25~29	25~29	—	A10	A10	A10	A10	A10	B10	B10	B10	B10	—	—	—	—
		30~50	—	A10	A10	A10	A10	A10	B10	B10	B10	B10	B12	B12	B12	B12
		51~75	—	—	A10	A10	A10	A10	B10	B10	B10	B10	B12	B12	B12	B12
		76~100	—	—	—	A10	A10	A10	B10	B10	B10	B10	B12	B12	B12	B12
151~200	30~50	25~29	—	A10	A10	A10	A10	A10	B10	B10	B10	B10	—	—	—	—
		30~50	—	A10	A10	A10	A10	A10	B10	B10	B10	B10	B12	B12	B12	B12
		51~75	—	—	B10	B10	B10	B10	B10	B10	B10	B10	B12	B12	B12	B12
		76~100	—	—	—	B10	B10	B10	B10	B10	B10	B10	B12	B12	B12	B12
		101~125	—	—	—	—	B10	B10	B10	B10	B10	B10	B12	B12	B12	B12
		126~150	—	—	—	—	—	B10	B10	B10	B10	B10	B12	B12	B12	B12
201~250	25~29	25~29	—	B10	B10	B10	B10	B10	B10	B10	B10	B10	—	—	—	—
		30~50	—	B10	B10	B10	B10	B10	B10	B10	B10	B10	B12	B12	B12	B12
		51~75	—	—	B10	B10	B10	B10	B10	B10	B10	B10	B12	B12	B12	B12
		76~100	—	—	—	B10	B10	B10	B10	B10	B10	B10	B12	B12	B12	B12
		101~125	—	—	—	—	B10	B10	B10	B10	B10	B10	B12	B12	B12	B12
		126~150	—	—	—	—	—	B10	B10	B10	B10	B10	B12	B12	B12	B12
		151~175	—	—	—	—	—	—	B10	B10	B10	B10	B12	B12	B12	B12
		176~200	—	—	—	—	—	—	—	B10	B10	B10	B12	B12	B12	B12
251~300	30~50	25~29	—	B10	B10	B10	B10	B10	B10	B10	B10	B10	—	—	—	—
		30~50	—	B10	B10	B10	B10	B10	B10	B10	B10	B10	B12	B12	B12	B12
		51~75	—	—	B10	B10	B10	B10	B10	B10	B10	B10	B12	B12	B12	B12
		76~100	—	—	—	B10	B10	B10	B10	B10	B10	B10	B12	B12	B12	B12
		101~125	—	—	—	—	B10	B10	B10	B10	B10	B10	B12	B12	B12	B12
		126~150	—	—	—	—	—	B10	B10	B10	B10	B10	B12	B12	B12	B12
		151~175	—	—	—	—	—	—	B10	B10	B10	B10	B12	B12	B12	B12
		176~200	—	—	—	—	—	—	—	B10	B10	B10	B12	B12	B12	B12
301~350	30~50	30~50	—	—	—	B12	B12	B12	B12	B12	B12	B12	B12	B12	B12	B12
		51~75	—	—	—	B12	B12	B12	B12	B12	B12	B12	B12	B12	B12	B12
		76~100	—	—	—	—	B12	B12	B12	B12	B12	B12	B12	B12	B12	B12
		101~125	—	—	—	—	B12	B12	B12	B12	B12	B12	B12	B12	B12	B12
		126~150	—	—	—	—	—	B12	B12	B12	B12	B12	B12	B12	B12	B12
		151~175	—	—	—	—	—	—	B12	B12	B12	B12	B12	B12	B12	B12
		176~200	—	—	—	—	—	—	—	B12	B12	B12	B12	B12	B12	B12
		176~200	—	—	—	—	—	—	—	B10	B10	B10	B12	B12	B12	B12
351~400	30~50	30~50	—	—	—	B12	B12	B12	B12	B12	B12	B12	B12	B12	B12	B12
		51~75	—	—	—	B12	B12	B12	B12	B12	B12	B12	B12	B12	B12	B12
		76~100	—	—	—	—	B12	B12	B12	B12	B12	B12	B12	B12	B12	B12
		101~125	—	—	—	—	B12	B12	B12	B12	B12	B12	B12	B12	B12	B12
		126~150	—	—	—	—	—	B12	B12	B12	B12	B12	B12	B12	B12	B12
		151~175	—	—	—	—	—	—	B12	B12	B12	B12	B12	B12	B12	B12
		176~200	—	—	—	—	—	—	—	B12	B12	B12	B12	B12	B12	B12
		176~200	—	—	—	—	—	—	—	B12	B12	B12	B12	B12	B12	B12
401~450	30~50	30~50	—	—	—	B12	B12	B12	B12	B12	B12	B12	B12	B12	B12	B12
		51~75	—	—	—	B12	B12	B12	B12	B12	B12	B12	B12	B12	B12	B12
		76~100	—	—	—	—	B12	B12	B12	B12	B12	B12	B12	B12	B12	B12
		101~125	—	—	—	—	B12	B12	B12	B12	B12	B12	B12	B12	B12	B12
		126~150	—	—	—	—	—	B12	B12	B12	B12	B12	B12	B12	B12	B12
		151~175	—	—	—	—	—	—	B12	B12	B12	B12	B12	B12	B12	B12
451~500	30~50	30~50	—	—	—	B12	B12	B12	B12	B12	B12	B12	B12	B12	B12	B12
		51~75	—	—	—	B12	B12	B12	B12	B12	B12	B12	B12	B12	B12	B12
		76~100	—	—	—	—	B12	B12	B12	B12	B12	B12	B12	B12	B12	B12
		101~125	—	—	—	—	B12	B12	B12	B12	B12	B12	B12	B12	B12	B12
		126~150	—	—	—	—	—	B12	B12	B12	B12	B12	B12	B12	B12	B12
		151~175	—	—	—	—	—	—	B12	B12	B12	B12	B12	B12	B12	B12
		176~200	—	—	—	—	—	—	—	B12	B12	B12	B12	B12	B12	B12
		176~200	—	—	—	—	—	—	—	B12	B12	B12	B12	B12	B12	B12

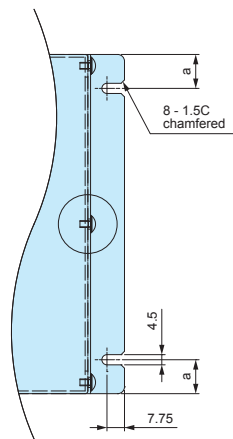
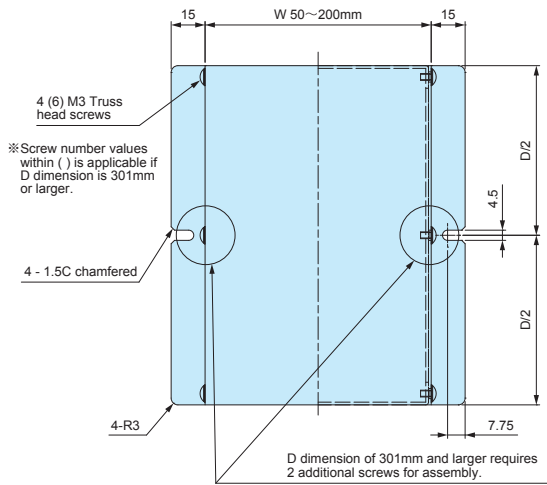
MBSF dimensions

[A10] Type

Standard • Panel thickness : 1.0mm

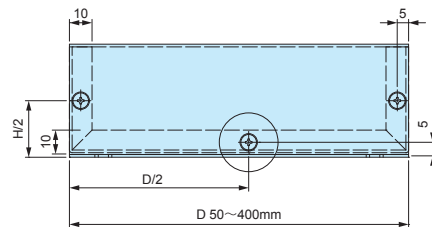
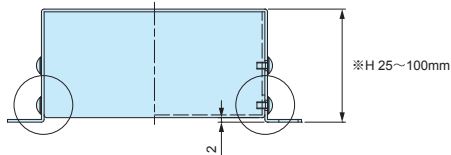
2-hole flange type

4-hole flange type



D dimension	a
50 ~ 60	10
61 ~ 140	15
141 ~ 240	20
241 ~ 400	30

Caution : Refer to the available dimensions on the chart.

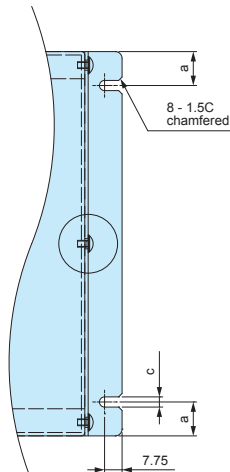
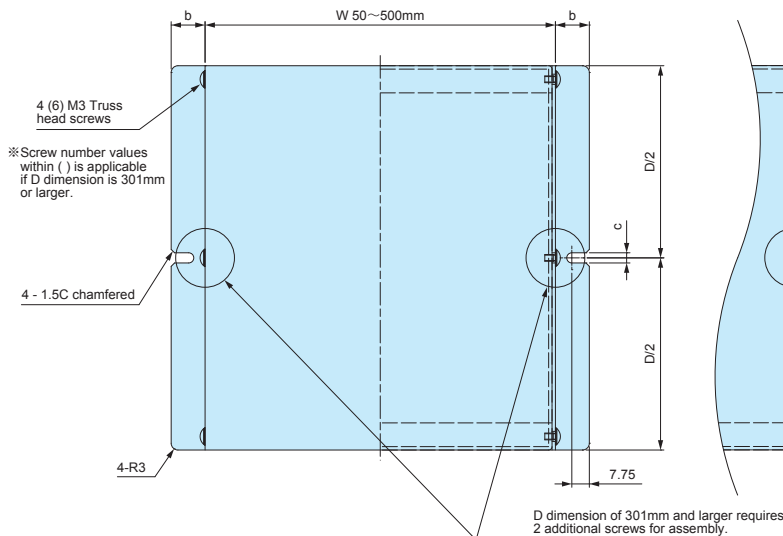


[B10] Type

Reinforced • Panel thickness : 1.0mm

2-hole flange type

4-hole flange type



D dimension	a	b	c
50 ~ 60	10	15	4.5
61 ~ 140	15	15	4.5
141 ~ 240	20	15	4.5
241 ~ 400	30	20	5.5

Caution : Refer to the available dimensions on the chart.

