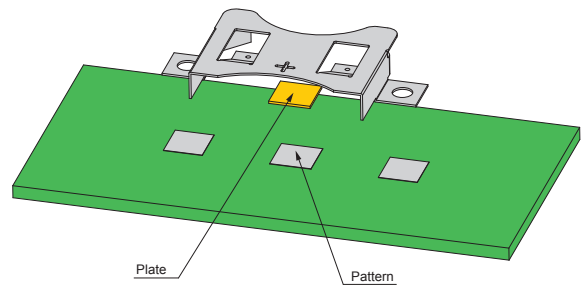


- Material / Finish : Phosphor bronze / Nickel plated
- Metal coin cell holder.
- Tape reel packages (-TR models) are available for bulk purchase.
- Make a negative pole on the PCB and place or solder a plate onto it.  
BK2032M negative contact can be used for SMTM2032 and BK-888.



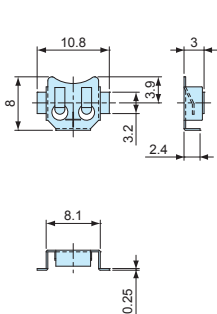
Product no. / Feature

Product no.	Matching coin cell	Contact type	Weight (g)	Pack of
BK-879	SR621/ML621	Surface mount x 2	0.2	10
BK-5091	LR44	Through hole x 2	0.5	10
<b>NEW</b> SMTM1225	CR1220/CR1225	Surface mount x 2	0.4	10
BK-890	CR1220/CR1225	Through hole x 2	0.4	10
SMTM1632	CR1632	Surface mount x 2	0.7	10
BK-869	CR1620/CR1632	Through hole x 2	0.7	10
BK-5067	CR2016	Surface mount x 2	0.8	10
SMTM2032	CR2032/CR2025	Surface mount x 2	0.9	10
BK-888	CR2032/CR2025	Through hole x 2	0.9	10
<b>NEW</b> SMTM1225-TR	CR1220/CR1225	Surface mount x 2	—	1,000 pcs / reel
SMTM1632-TR	CR1632	Surface mount x 2	—	700 pcs / reel
SMTM2032-TR	CR2032/CR2025	Surface mount x 2	—	600 pcs / reel

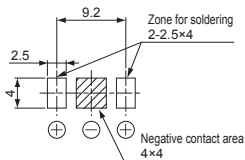
SMTM • BK dimensions

■ DXF/DWG/PDF drawings available on our website.

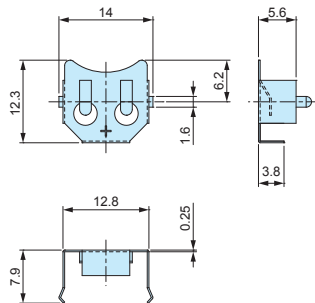
BK-879



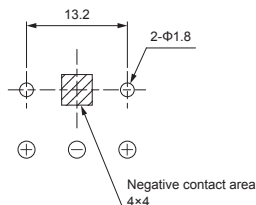
PCB layout top view



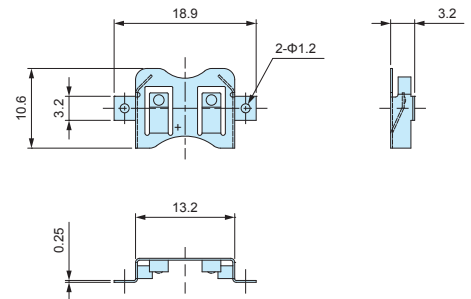
BK-5091



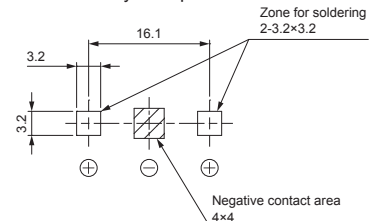
PCB layout top view



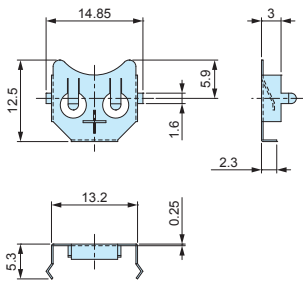
SMTM1225



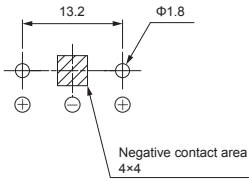
PCB layout top view



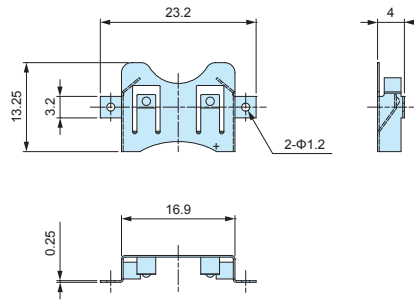
BK-890



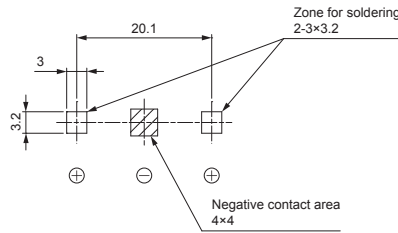
PCB layout top view



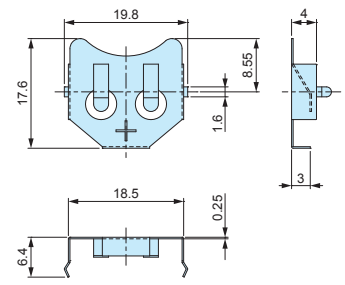
SMTM1632



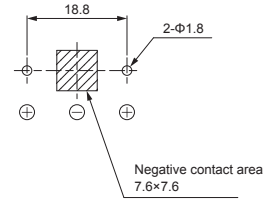
PCB layout top view



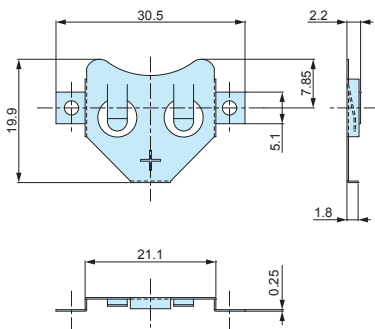
BK-869



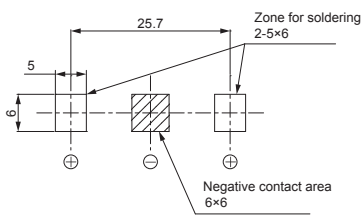
PCB layout top view



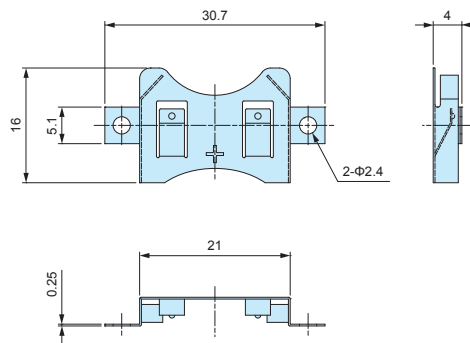
BK-5067



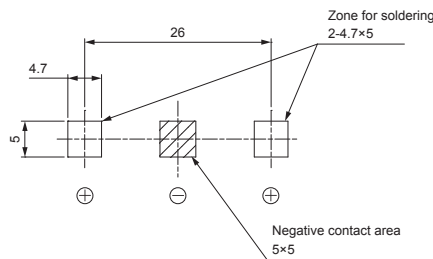
PCB layout top view



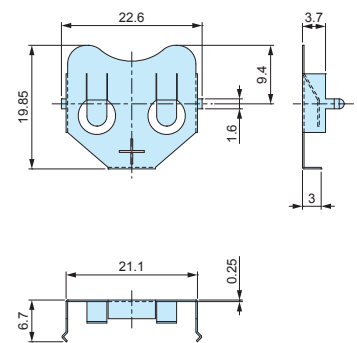
SMTM2032



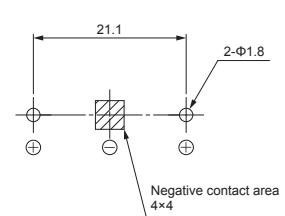
PCB layout top view



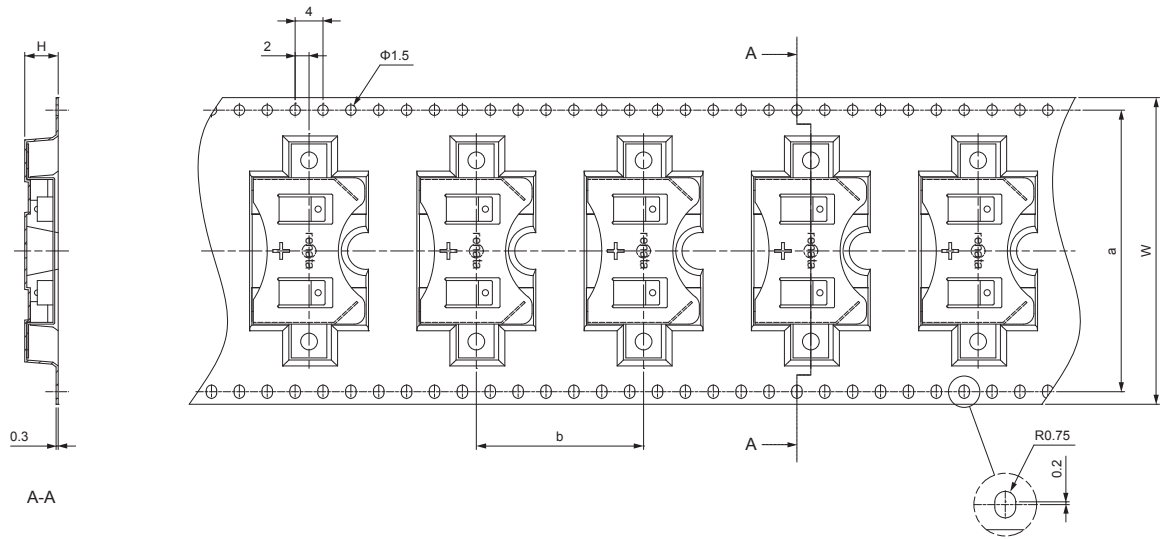
BK-888



PCB layout top view



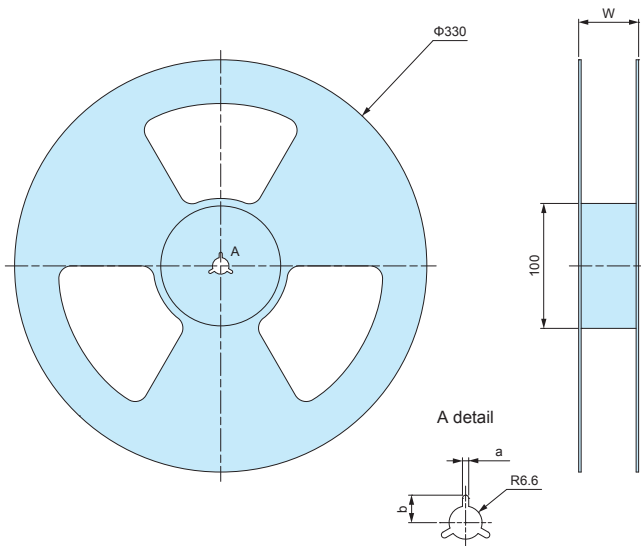
**Tape dimensions**



※Holder storage spacing will vary depending on model.

Product no.	W	H	a	b
SMTM1225-TR	32	3.8	28	16
SMTM1632-TR	44	4.5	40.4	20
SMTM2032-TR	44	4.8	40.4	24

**Reel dimensions**

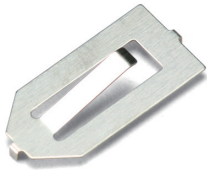


Product no.	Pcs / Reel	w	a	b
SMTM1225-TR	1,000	38.5	2.1	10.4
SMTM1632-TR	700	50.5	2.1	10.4
SMTM2032-TR	600	48.5	2.4	11

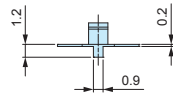
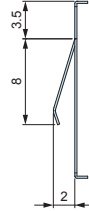
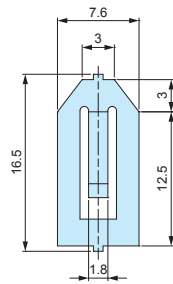
**BK-2032M**

**NEGATIVE COIN CELL CONTACT for CR2032**

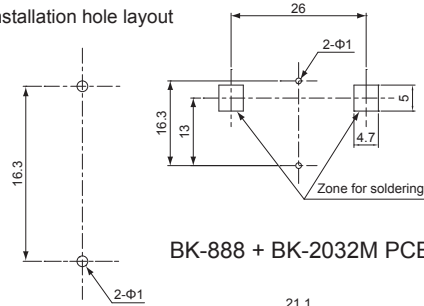
■ DXF/DWG/PDF drawings available on our website.



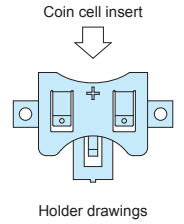
- Material / Finish : Phosphor bronze / Nickel plated
- Negative contact for CR2032 coin cell.
- Suitable to be used with SMTM2032 or BK-888 holders.
- Cut area will have base material exposed (unfinished).



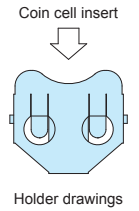
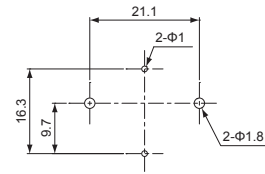
Installation hole layout



SMTM + BK-2032M PCB layout top view



BK-888 + BK-2032M PCB layout top view



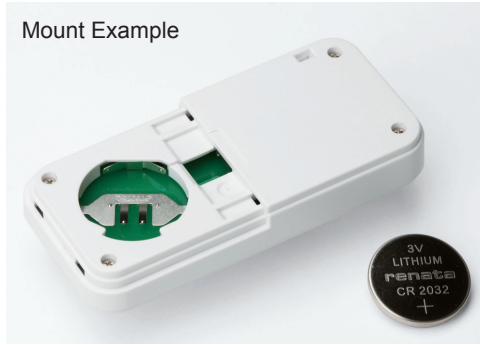
■ Recommended PCB thickness for installation is 1.0mm or thinner.

**Product no. / Feature**

Product no.	Matching coin cell	Contact type	Weight (g)	Pack of
BK-2032M	CR2032	Through hole x 2	0.2	10

# CST SERIES

# CR2032 BATTERY CONTACT



■ Material : SUS304 / Nickel plated

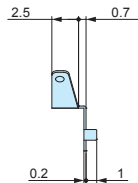
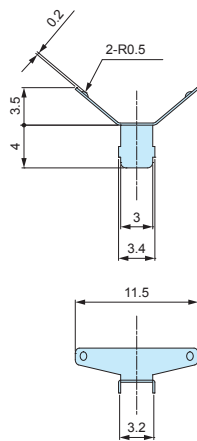
- Battery contact for CR2032 coin cell.
- "CR2032" and "⊖" indicators are engraved on the negative side.
- Use with enclosures that utilizes CR2032 coin cells.

### Product no. / Feature

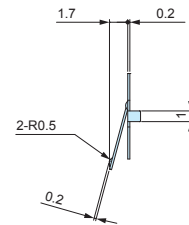
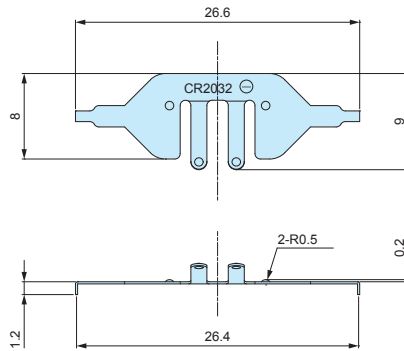
Product no.	Matching coin cell	Contact type	Weight (g)	Pack of
CST-2032P	CR2032	Through hole x 2	0.1	10
CST-2032M	CR2032	Through hole x 2	0.2	10

■ DXF/DWG/PDF drawings available on our website.

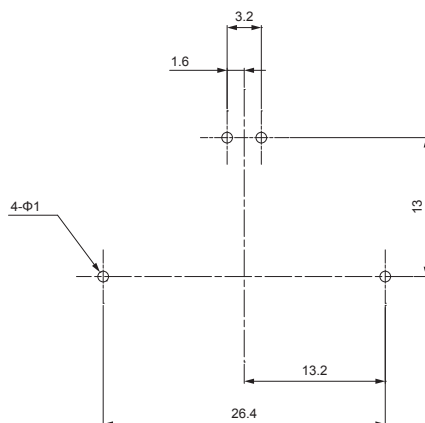
CST-2032P



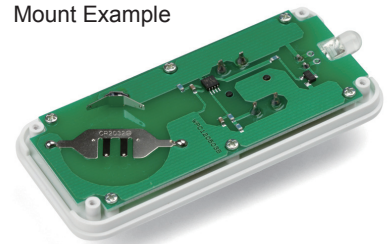
CST-2032M



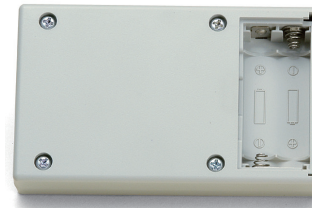
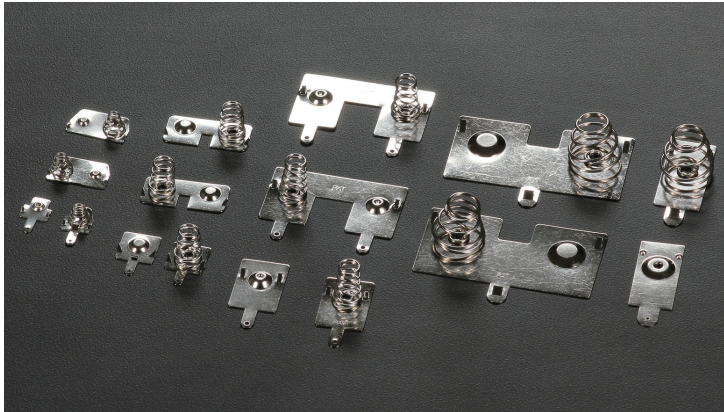
Recommended PCB hole layout



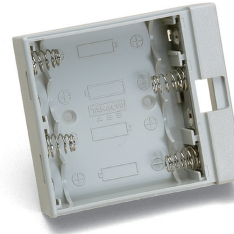
Mount Example



■ Refer to the mount example for mounting direction of contacts.



Installation Example



Installation Example



Components

Plate material	Plate finish	Spring material	Spring finish
Brass	Nickel plated	Stainless steel SUS304	Unfinished
		Steel wire	Nickel plated

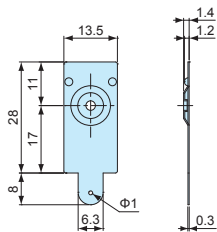
Product no. / Feature

Product no.	Spring diameter	Spring material	Matching battery / Details	Weight (g)	Pack of
IT-1SP	—	—	D : + (Positive)	1.2	10
IT-1SM	Φ1.0	Stainless steel SUS304	D : - (Negative)	2.5	10
IT-1WP	Φ1.0	Stainless steel SUS304	D : Left + (Positive) • Right - (Negative)	5.0	10
IT-1WM	Φ1.0	Stainless steel SUS304	D : Left - (Negative) • Right - (Positive)	5.0	10
IT-2SP	—	—	C : + (Positive)	0.9	10
IT-2SM	Φ0.7	Steel wire	C : - (Negative)	1.4	10
IT-2WP	Φ0.7	Steel wire	C : Left + (Positive) • Right - (Negative)	2.7	10
IT-2WM	Φ0.7	Steel wire	C : Left - (Negative) • Right - (Positive)	2.7	10
IT-3SP	—	—	AA : + (Positive)	0.4	10
IT-3SM	Φ0.6	Steel wire	AA : - (Negative)	0.7	10
IT-3WP	Φ0.6	Steel wire	AA : Left + (Positive) • Right - (Negative)	1.1	10
IT-3WM	Φ0.6	Steel wire	AA : Left - (Negative) • Right - (Positive)	1.1	10
IT-4SP	—	—	AAA : + (Positive)	0.2	10
IT-4SM	Φ0.5	Steel wire	AAA : - (Negative)	0.4	10
IT-4WP	Φ0.5	Steel wire	AAA : Left + (Positive) • Right - (Negative)	0.6	10
IT-4WM	Φ0.5	Steel wire	AAA : Left - (Negative) • Right - (Positive)	0.6	10

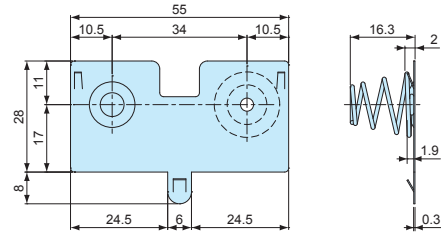
IT dimensions

■ DXF/DWG/PDF drawings available on our website.

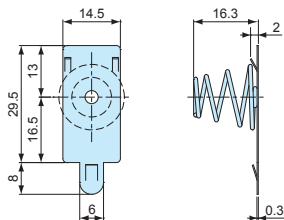
IT-1SP



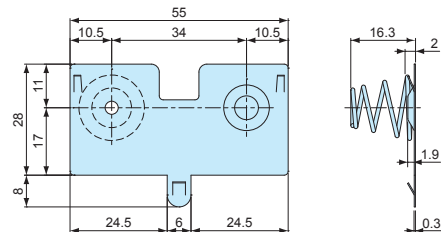
IT-1WP



IT-1SM

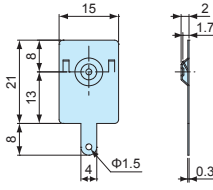


IT-1WM

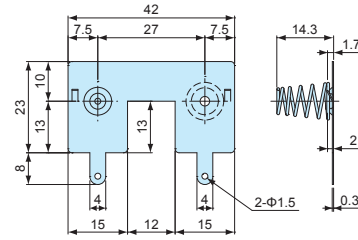


■ DXF/DWG/PDF drawings available on our website.

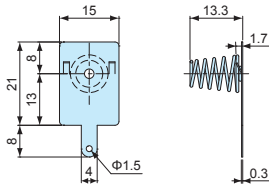
IT-2SP



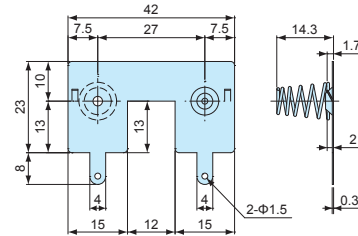
IT-2WP



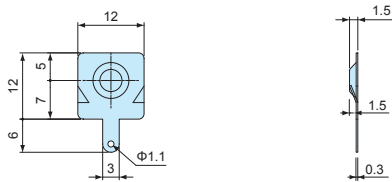
IT-2SM



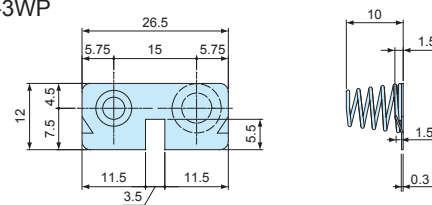
IT-2WM



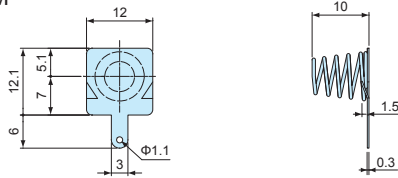
IT-3SP



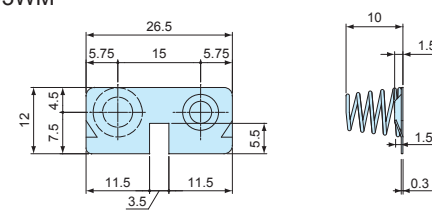
IT-3WP



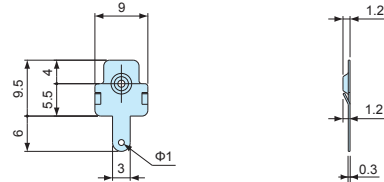
IT-3SM



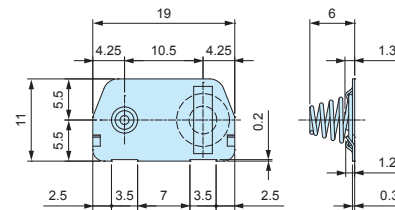
IT-3WM



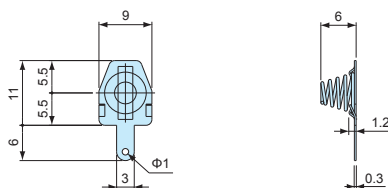
IT-4SP



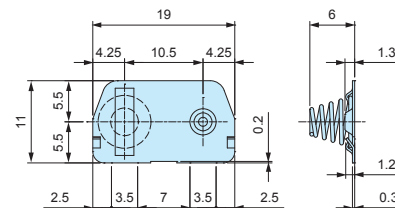
IT-4WP



IT-4SM



IT-4WM



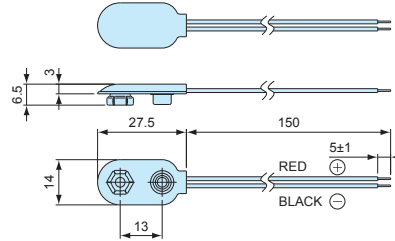
# MP SERIES

# BATTERY SNAP

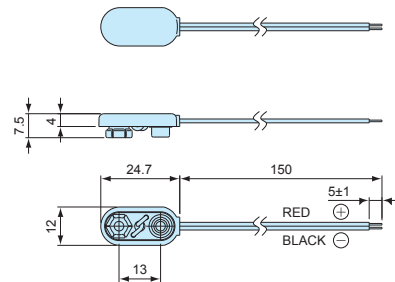
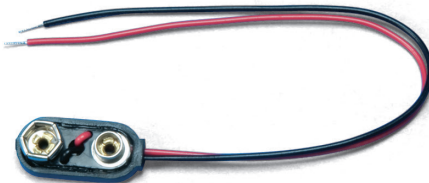
■ Battery snap with crimp terminal.

■ DXF/DWG/PDF drawings available on our website.

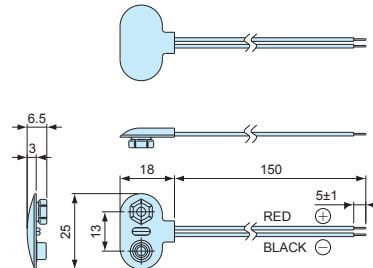
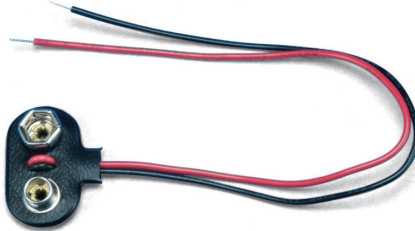
MP-1SN



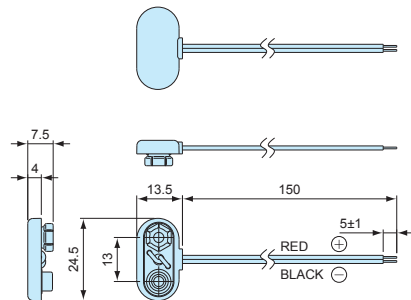
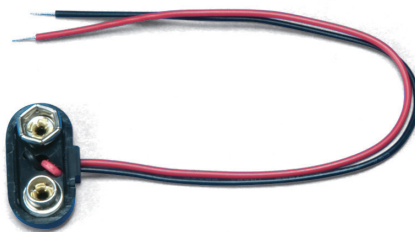
MP-1LN



MP-TSN



MP-TLN



### Components

Wire material	Cover material	Battery contact / Finish
UL1007 AWG26 (L=150)	PVC • ABS	Brass / Nickel plated

### Product no. / Feature

Product no.	Cover material	Matching battery	Weight g)	Pack of
MP-1SN	PVC	9V x 1	2.1	10
MP-1LN	ABS	9V x 1	2.5	10
MP-TSN	PVC	9V x 1	2.1	10
MP-TLN	ABS	9V x 1	2.5	10