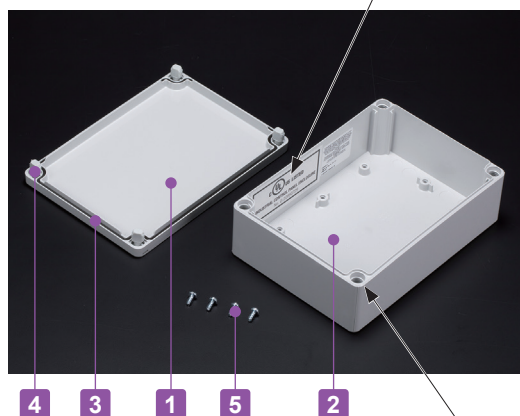


Technical Data

Protection class: NEMA Type 4, 4X, 6, 12, 13
(equivalent to IP66 / 67)
Operating temperature: -20°C ~ +75°C
Recommended torque: 1N • m ~ 1.5N • m



UL certification sticker



- UL FILE No,E343339 / UL508A(USA), CSA C22.2 No. 14(Canada) certified products.
- Applicable standard: INDUSTRIAL CONTROL PANELS
See www.ul.com for additional information.
- NEMA standards are developed by the National Electrical Manufacturers Association (NEMA) in USA.
- NEMA Type 4X rating is equivalent to IP56 protection rating.
- NEMA Type 6 rating is equivalent to IP67 protection rating.

- Make sure to read "Precautions for UL Certified Products" notice before ordering.
- UL certified products are built to order. The minimum order quantity (MOQ) and incremental order quantity, as well as delivery time is listed on page UL-instructions.

- UL certified polycarbonate enclosure for superior impact resistance.
- Available in 2 different cover types (white gray and transparent).
- Suitable to be used as controller, junction box, network devices, outdoor measuring instrument and others.

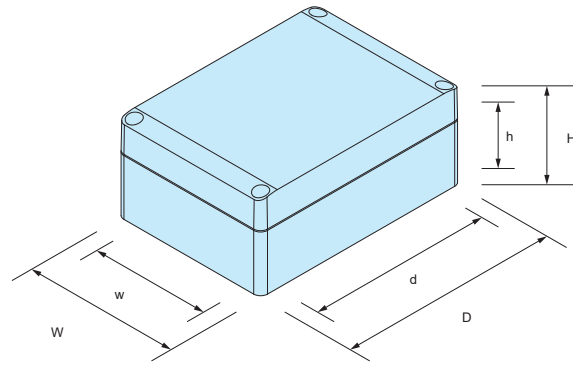
- Mountable on walls by using the cover holes for fastening without external wall mounting brackets.

Components

| No. | Part name | Pcs | Material | Color / Finish |
|-----|---|-----|--|-------------------------------------|
| 1 | Cover | 1 | Polycarbonate (UL94V-2) | White gray (RAL 7035) • Transparent |
| 2 | Body | 1 | Glass fiber filled polycarbonate (UL94V-0) | White gray (RAL 7035) |
| 3 | Gasket | 1 | Polyurethane | Black |
| 4 | Cover screw | 4 | Polyamide | White gray |
| 5 | Self-tapping screw (for mounting plate) | 4 | Steel | Unichrome plated |

SPCP.U dimensions

■ DXF/DWG/PDF drawings available on our website.



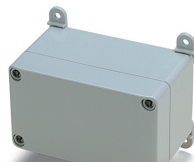
Product no. / Details

| Product no. | | | | External dimensions | | | Internal dimensions | | | Weight (g) | BTO | |
|----------------|------|----------------|--------------|---------------------|-----|-----|---------------------|-------|-------|------------|------------------|---------------|
| G.U type | | T.U type | | W | D | H | w | d | h | | | |
| Cover | Body | Cover | Body | | | | | | | | MOQ | Delivery time |
| ● White gray | | ○ Transparent | ● White gray | | | | | | | | | |
| SPCP081304LG.U | | SPCP081304LT.U | | 75 | 125 | 35 | 65.5 | 91 | 20.5 | 120 | 1 Carton (12Pcs) | 6 months |
| SPCP081305LG.U | | SPCP081305LT.U | | 75 | 125 | 50 | 65.5 | 91 | 35.5 | 150 | 1 Carton (18Pcs) | 6 months |
| SPCP081306G.U | | SPCP081306T.U | | 75 | 125 | 60 | 65.5 | 91 | 45.5 | 161 | 1 Carton (18Pcs) | 6 months |
| SPCP081308G.U | | SPCP081308T.U | | 75 | 125 | 75 | 65.5 | 91 | 60.5 | 213 | 1 Carton (18Pcs) | 6 months |
| SPCP081310G.U | | SPCP081310T.U | | 75 | 125 | 100 | 65 | 90.5 | 85.5 | 278 | 1 Carton (9Pcs) | 6 months |
| SPCP081313G.U | | SPCP081313T.U | | 75 | 125 | 125 | 64.5 | 90 | 110.5 | 306 | 1 Carton (9Pcs) | 6 months |
| SPCP101004LG.U | | SPCP101004LT.U | | 100 | 100 | 35 | 90.5 | 66 | 20.5 | 124 | 1 Carton (18Pcs) | 6 months |
| SPCP101006G.U | | SPCP101006T.U | | 100 | 100 | 60 | 90.5 | 66 | 45.5 | 165 | 1 Carton (12Pcs) | 6 months |
| SPCP131804LG.U | | SPCP131804LT.U | | 125 | 175 | 35 | 115.5 | 141 | 20.5 | 237 | 1 Carton (18Pcs) | 6 months |
| SPCP131805LG.U | | SPCP131805LT.U | | 125 | 175 | 50 | 115.5 | 141 | 35.5 | 282 | 1 Carton (12Pcs) | 6 months |
| SPCP131806G.U | | SPCP131806T.U | | 125 | 175 | 60 | 115.5 | 141 | 45.5 | 297 | 1 Carton (12Pcs) | 6 months |
| SPCP131808G.U | | SPCP131808T.U | | 125 | 175 | 75 | 115.5 | 141 | 60.5 | 378 | 1 Carton (25Pcs) | 6 months |
| SPCP131810G.U | | SPCP131810T.U | | 125 | 175 | 100 | 115 | 140.5 | 85.5 | 463 | 1 Carton (19Pcs) | 6 months |
| SPCP131813G.U | | SPCP131813T.U | | 125 | 175 | 125 | 115 | 140.5 | 110.5 | 531 | 1 Carton (14Pcs) | 6 months |
| SPCP131815G.U | | SPCP131815T.U | | 125 | 175 | 150 | 114 | 139.5 | 135.5 | 600 | 1 Carton (6Pcs) | 6 months |
| SPCP181808G.U | | SPCP181808T.U | | 175 | 175 | 75 | 165.5 | 141 | 60.5 | 475 | 1 Carton (7Pcs) | 6 months |
| SPCP181810G.U | | SPCP181810T.U | | 175 | 175 | 100 | 165 | 140.5 | 85.5 | 584 | 1 Carton (6Pcs) | 6 months |
| SPCP181813G.U | | SPCP181813T.U | | 175 | 175 | 125 | 164.5 | 140 | 110.5 | 652 | 1 Carton (5Pcs) | 6 months |
| SPCP181815G.U | | SPCP181815T.U | | 175 | 175 | 150 | 164 | 139.5 | 135.5 | 738 | 1 Carton (4Pcs) | 6 months |
| SPCP182508G.U | | SPCP182508T.U | | 175 | 250 | 75 | 165.5 | 216 | 60.5 | 637 | 1 Carton (12Pcs) | 6 months |
| SPCP182510G.U | | SPCP182510T.U | | 175 | 250 | 100 | 165 | 215.5 | 85.5 | 754 | 1 Carton (12Pcs) | 6 months |
| SPCP182515G.U | | SPCP182515T.U | | 175 | 250 | 150 | 164 | 214.5 | 135.5 | 959 | 1 Carton (6Pcs) | 6 months |

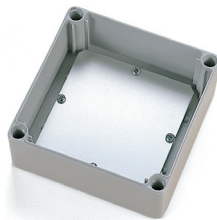
Accessories (Optional parts) ■ Not UL certified products.



Terminal block • Terminal cover STB • STC series
See page STB • STC-1 ~ STB • STC-4



Mounting bracket SFL-1
See page SPCM • SPCP-ACC-1



Mounting plate SMP series
See page SPCM • SPCP-ACC-1



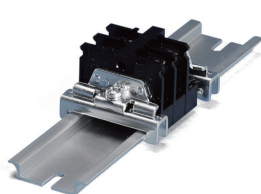
Cable gland
See website



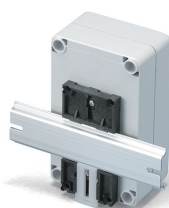
Protective vent PMF series
See page 325 ~ 326



DIN-rail FDR series
See page FDR-1-2



DIN-Rail stopper bracket TKR series
See page DIN-ACC-2



DIN-rail mounting base DRA series
See page DIN-ACC-1



Pole mounting bracket
See page SSK-1

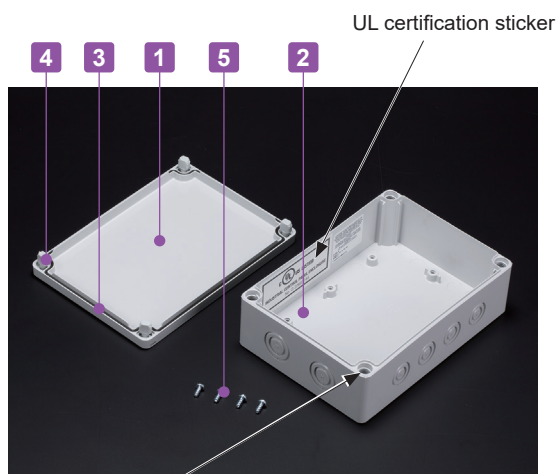


Outdoor roof for SPCM • SPCP SR series
See page SPCM • SPCP-ACC-2



Technical Data

Protection class: NEMA Type 4, 4X, 6, 12, 13
(equivalent to IP66 / 67)
Operating temperature: -20°C ~ +75°C
Recommended torque: 1N • m ~ 1.5N • m



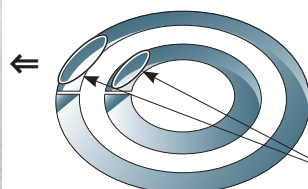
- Mountable on walls by using the cover holes for fastening.



- UL FILE No. E343339 / UL508A(USA), CSA C22.2 No. 14(Canada) certified products.
- Applicable standard: INDUSTRIAL CONTROL PANELS
See www.ul.com for additional information.
- NEMA standards are developed by the National Electrical Manufacturers Association (NEMA) in USA.
- NEMA Type 4X rating is equivalent to IP56 protection rating.
- NEMA Type 6 rating is equivalent to IP67 protection rating.

- Make sure to read "Precautions for UL Certified Products" notice before ordering.
- UL certified products are built to order. The minimum order quantity (MOQ) and incremental order quantity, as well as delivery time is listed on page UL-instructions.

- UL certified polycarbonate enclosure for superior impact resistance.
- Available in 2 different cover types (white gray and transparent).
- Molded with metric knock-outs for easy removal for cable entry.
- Suitable to be used as controller, junction box, network devices, outdoor measuring instrument and others.



- To knock out the hole covers, rest a flathead screwdriver at the "A" points, and punch out the knock-outs by hammering on the rear end of the screwdriver handle with a hammer.

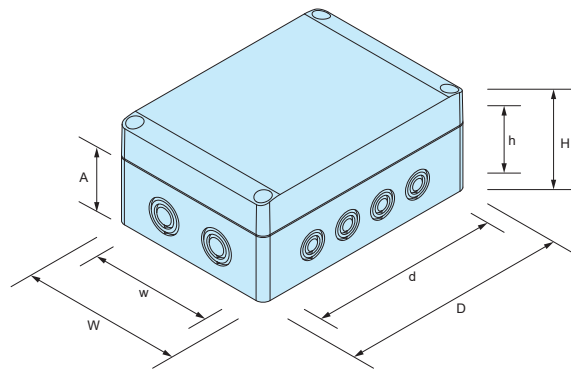
"A" point

Components

| No. | Part name | Pcs | Material | Color / Finish |
|-----|---|-----|--|-------------------------------------|
| 1 | Cover | 1 | Polycarbonate (UL94V-2) | White gray (RAL 7035) • Transparent |
| 2 | Body | 1 | Glass fiber filled polycarbonate (UL94V-0) | White gray (RAL 7035) |
| 3 | Gasket | 1 | Polyurethane | Black |
| 4 | Cover screw | 4 | Polyamide | White gray |
| 5 | Self-tapping screw (for mounting plate) | 4 | Steel | Unichrome plated |

SPCM.U dimensions

■ DXF/DWG/PDF drawings available on our website.

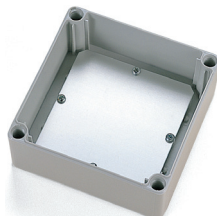
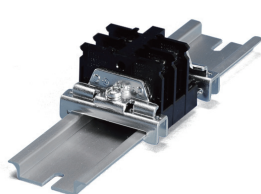
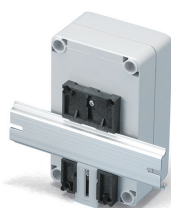


■ Metric knock-outs are on all 4 sides.

Product no. / Details

| Product no. | | | | External dimensions | | | | Internal dimensions | | | Weight (g) | BTO | |
|----------------|------|----------------|--------------|---------------------|-----|-----|----|---------------------|-------|-------|------------|------------------|----------|
| G.U type | | T.U type | | W | D | H | A | w | d | h | | | |
| Cover | Body | Cover | Body | | | | | | | | | | |
| ● White gray | | ○ Transparent | ● White gray | | | | | | | | | | |
| SPCM081306G.U | | SPCM081306T.U | | 75 | 125 | 60 | 50 | 65.5 | 91 | 45.5 | 159 | 1 Carton (18Pcs) | 6 months |
| SPCM081308G.U | | SPCM081308T.U | | 75 | 125 | 75 | 50 | 65.5 | 91 | 60.5 | 208 | 1 Carton (18Pcs) | 6 months |
| SPCM081310G.U | | SPCM081310T.U | | 75 | 125 | 100 | 50 | 65 | 90.5 | 85.5 | 275 | 1 Carton (9Pcs) | 6 months |
| SPCM081313G.U | | SPCM081313T.U | | 75 | 125 | 125 | 50 | 64.5 | 90 | 110.5 | 299 | 1 Carton (9Pcs) | 6 months |
| SPCM131806G.U | | SPCM131806T.U | | 125 | 175 | 60 | 50 | 115.5 | 141 | 45.5 | 294 | 1 Carton (12Pcs) | 6 months |
| SPCM131808G.U | | SPCM131808T.U | | 125 | 175 | 75 | 50 | 115.5 | 141 | 60.5 | 373 | 1 Carton (25Pcs) | 6 months |
| SPCM131810G.U | | SPCM131810T.U | | 125 | 175 | 100 | 50 | 115 | 140.5 | 85.5 | 450 | 1 Carton (19Pcs) | 6 months |
| SPCM131813G.U | | SPCM131813T.U | | 125 | 175 | 125 | 50 | 115 | 140.5 | 110.5 | 519 | 1 Carton (14Pcs) | 6 months |
| SPCM131815G.U | | SPCM131815T.U | | 125 | 175 | 150 | 50 | 114 | 139.5 | 135.5 | 588 | 1 Carton (6Pcs) | 6 months |
| SPCM182508G.U | | SPCM182508T.U | | 175 | 250 | 75 | 50 | 165.5 | 216 | 60.5 | 633 | 1 Carton (12Pcs) | 6 months |
| SPCM182510G.U | | SPCM182510T.U | | 175 | 250 | 100 | 50 | 165 | 215.5 | 85.5 | 745 | 1 Carton (12Pcs) | 6 months |
| SPCM182510HG.U | | SPCM182510HT.U | | 175 | 250 | 100 | 75 | 164.8 | 215.4 | 85.5 | 718 | 1 Carton (12Pcs) | 6 months |
| SPCM182513HG.U | | SPCM182513HT.U | | 175 | 250 | 125 | 75 | 164.3 | 214.9 | 110.5 | 855 | 1 Carton (10Pcs) | 6 months |
| SPCM182515G.U | | SPCM182515T.U | | 175 | 250 | 150 | 50 | 164 | 214.5 | 135.5 | 946 | 1 Carton (6Pcs) | 6 months |
| SPCM182518HG.U | | SPCM182518HT.U | | 175 | 250 | 175 | 75 | 163.5 | 214.1 | 160.5 | 983 | 1 Carton (6Pcs) | 6 months |

Accessories (Optional parts) ■ Not UL certified products.

Terminal block • Terminal cover STB • STC series
See page STB • STC-1 ~ STB • STC-4Mounting bracket SFL-1
See page SPCM • SPCP-ACC-1Mounting plate SMP series
See page SPCM • SPCP-ACC-1Cable gland
See cable gland pagesProtective vent PMF series
See page 325 ~ 326DIN-rail FDR series
See page FDR-1-2DIN-Rail stopper bracket TKR series
See page DIN-ACC-2DIN-rail mounting base DRA series
See page DIN-ACC-1Pole mounting bracket
See page SSK-1Outdoor roof for SPCM • SPCP SR series
See page SPCM • SPCP-ACC-2



Precautions for UL Certified Products

Please note that the important information remains the same even in case of ordering customized product(s).

1. UL certified products are not returnable or replaceable (except for defects).
2. Each UL certified product has a unique UL certification sticker with a serial number.
This sticker cannot be easily removed and in the event where it is damaged or the characters are illegible, UL application may be rejected.
3. The position of the UL certification sticker is determined according to the product size and cannot be changed. Please check the position of the sticker on the drawing (such as CAD, PDF or other drawings) of the corresponding model number. Drawings are downloadable from our website.
4. The serial number on the UL certification sticker cannot be reissued with the same serial number.
5. Defective products (such as those with molding error) are subject of replacement.
Note that the replacement(s) will incur a manufacturing and delivery lead-time; the serial number will also change.
6. UL certification sticker cannot be sold or issued separately (each product has an unique UL certification sticker attached).
7. Enclosure model number cannot be changed when applying for UL certification as each UL registered serial number is unique to each individual enclosure that is manufactured.
8. Customers are responsible for the UL application for the final product.
TAKACHI does not offer any application support, documentation assistance, or any other forms of guidance etc. related to the application process.
9. For details on UL application and E-numbers, please contact UL directly.

Specifications Overview

UL508A is a standard for industrial control panels published by Underwriters Laboratories Limited Liability Company (UL LLC) in USA.

NEMA standards are a set of technical standards developed by the National Electrical Manufacturers Association (NEMA) in USA.

The NEMA Type 4X rating is equivalent to the IP56 protection rating.

The NEMA Type 6 rating is equivalent to the IP67 protection rating.