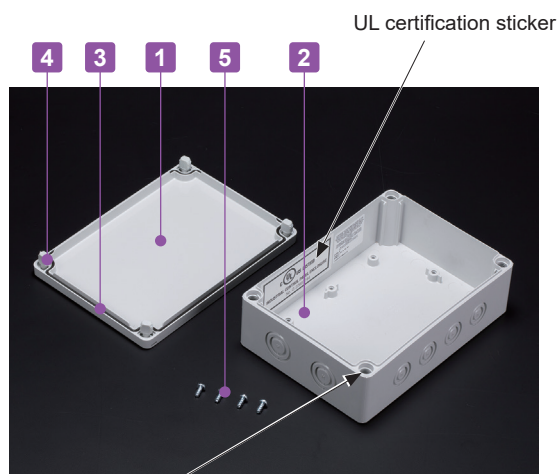




## Technical Data

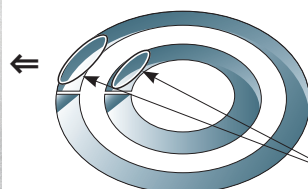
Protection class: NEMA Type 4, 4X, 6, 12, 13  
(equivalent to IP66 / 67)  
Operating temperature: -20°C ~ +75°C  
Recommended torque: 1N • m ~ 1.5N • m



- Mountable on walls by using the cover holes for fastening.



- UL FILE No. E343339 / UL508A(USA), CSA C22.2 No. 14(Canada) certified products.
- Applicable standard: INDUSTRIAL CONTROL PANELS  
See [www.ul.com](http://www.ul.com) for additional information.
- NEMA standards are developed by the National Electrical Manufacturers Association (NEMA) in USA.
- NEMA Type 4X rating is equivalent to IP56 protection rating.
- NEMA Type 6 rating is equivalent to IP67 protection rating.
- Make sure to read "Precautions for UL Certified Products" notice before ordering.
- UL certified products are built to order. The minimum order quantity (MOQ) and incremental order quantity, as well as delivery time is listed on page UL-instructions.
- UL certified polycarbonate enclosure for superior impact resistance.
- Available in 2 different cover types (white gray and transparent).
- Molded with metric knock-outs for easy removal for cable entry.
- Suitable to be used as controller, junction box, network devices, outdoor measuring instrument and others.



- To knock out the hole covers, rest a flathead screwdriver at the "A" points, and punch out the knock-outs by hammering on the rear end of the screwdriver handle with a hammer.

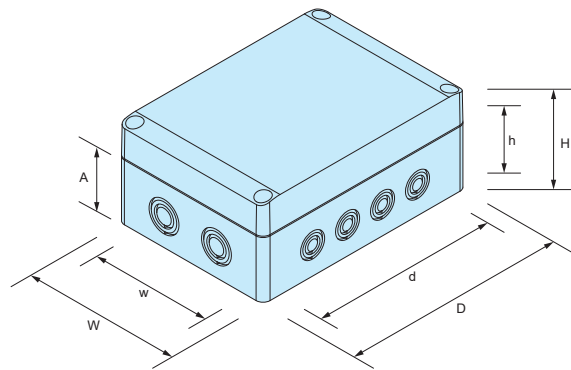
"A" point

## Components

No.	Part name	Pcs	Material	Color / Finish
1	Cover	1	Polycarbonate (UL94V-2)	White gray (RAL 7035) • Transparent
2	Body	1	Glass fiber filled polycarbonate (UL94V-0)	White gray (RAL 7035)
3	Gasket	1	Polyurethane	Black
4	Cover screw	4	Polyamide	White gray
5	Self-tapping screw (for mounting plate)	4	Steel	Unichrome plated

## SPCM.U dimensions

■ DXF/DWG/PDF drawings available on our website.

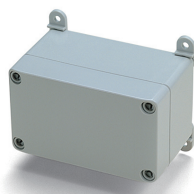
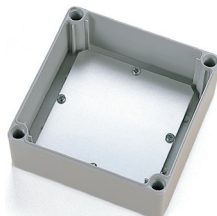
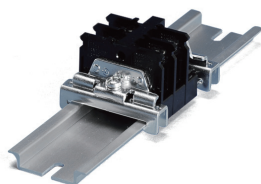
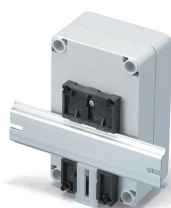


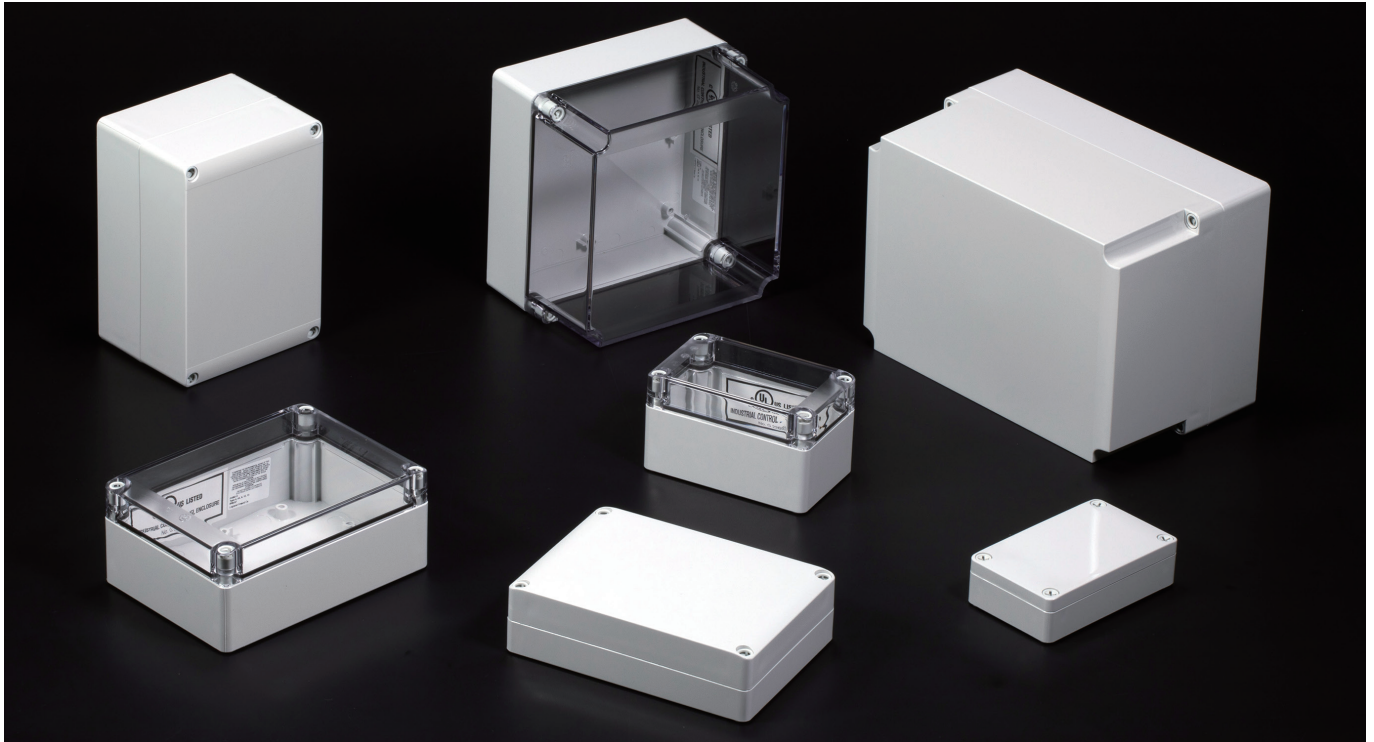
■ Metric knock-outs are on all 4 sides.

## Product no. / Details

Product no.				External dimensions				Internal dimensions			Weight (g)	BTO	
G.U type		T.U type		W	D	H	A	w	d	h			
Cover	Body	Cover	Body										
● White gray		○ Transparent	● White gray										
SPCM081306G.U		SPCM081306T.U		75	125	60	50	65.5	91	45.5	159	1 Carton (18Pcs)	6 months
SPCM081308G.U		SPCM081308T.U		75	125	75	50	65.5	91	60.5	208	1 Carton (18Pcs)	6 months
SPCM081310G.U		SPCM081310T.U		75	125	100	50	65	90.5	85.5	275	1 Carton ( 9Pcs)	6 months
SPCM081313G.U		SPCM081313T.U		75	125	125	50	64.5	90	110.5	299	1 Carton ( 9Pcs)	6 months
SPCM131806G.U		SPCM131806T.U		125	175	60	50	115.5	141	45.5	294	1 Carton (12Pcs)	6 months
SPCM131808G.U		SPCM131808T.U		125	175	75	50	115.5	141	60.5	373	1 Carton (25Pcs)	6 months
SPCM131810G.U		SPCM131810T.U		125	175	100	50	115	140.5	85.5	450	1 Carton (19Pcs)	6 months
SPCM131813G.U		SPCM131813T.U		125	175	125	50	115	140.5	110.5	519	1 Carton (14Pcs)	6 months
SPCM131815G.U		SPCM131815T.U		125	175	150	50	114	139.5	135.5	588	1 Carton (6Pcs)	6 months
SPCM182508G.U		SPCM182508T.U		175	250	75	50	165.5	216	60.5	633	1 Carton (12Pcs)	6 months
SPCM182510G.U		SPCM182510T.U		175	250	100	50	165	215.5	85.5	745	1 Carton (12Pcs)	6 months
SPCM182510HG.U		SPCM182510HT.U		175	250	100	75	164.8	215.4	85.5	718	1 Carton (12Pcs)	6 months
SPCM182513HG.U		SPCM182513HT.U		175	250	125	75	164.3	214.9	110.5	855	1 Carton (10Pcs)	6 months
SPCM182515G.U		SPCM182515T.U		175	250	150	50	164	214.5	135.5	946	1 Carton ( 6Pcs)	6 months
SPCM182518HG.U		SPCM182518HT.U		175	250	175	75	163.5	214.1	160.5	983	1 Carton ( 6Pcs)	6 months

## Accessories (Optional parts) ■ Not UL certified products.

Terminal block • Terminal cover STB • STC series  
See page STB • STC-1 ~ STB • STC-4Mounting bracket SFL-1  
See page SPCM • SPCP-ACC-1Mounting plate SMP series  
See page SPCM • SPCP-ACC-1Cable gland  
See cable gland pagesProtective vent PMF series  
See page 325 ~ 326DIN-rail FDR series  
See page FDR-1-2DIN-Rail stopper bracket TKR series  
See page DIN-ACC-2DIN-rail mounting base DRA series  
See page DIN-ACC-1Pole mounting bracket  
See page SSK-1Outdoor roof for SPCM • SPCP SR series  
See page SPCM • SPCP-ACC-2

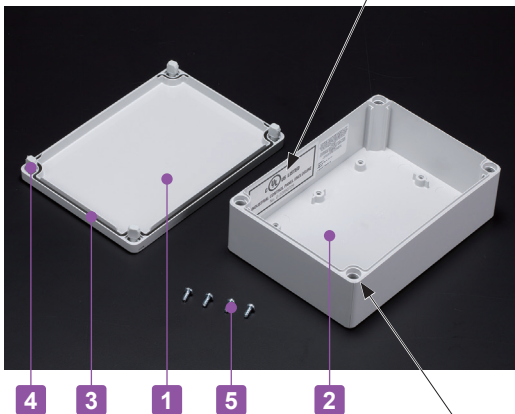


## Technical Data

Protection class: NEMA Type 4, 4X, 6, 12, 13  
(equivalent to IP66 / 67)  
Operating temperature: -20°C ~ +75°C  
Recommended torque: 1N • m ~ 1.5N • m



UL certification sticker



- UL FILE No,E343339 / UL508A(USA), CSA C22.2 No. 14(Canada) certified products.
- Applicable standard: INDUSTRIAL CONTROL PANELS  
See [www.ul.com](http://www.ul.com) for additional information.
- NEMA standards are developed by the National Electrical Manufacturers Association (NEMA) in USA.
- NEMA Type 4X rating is equivalent to IP56 protection rating.
- NEMA Type 6 rating is equivalent to IP67 protection rating.
- Make sure to read "Precautions for UL Certified Products" notice before ordering.
- UL certified products are built to order. The minimum order quantity (MOQ) and incremental order quantity, as well as delivery time is listed on page UL-instructions.
- UL certified polycarbonate enclosure for superior impact resistance.
- Available in 2 different cover types (white gray and transparent).
- Suitable to be used as controller, junction box, network devices, outdoor measuring instrument and others.
- Mountable on walls by using the cover holes for fastening without external wall mounting brackets.

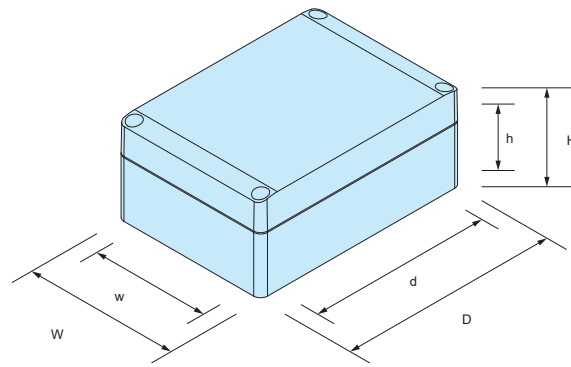
## Components

No.	Part name	Pcs	Material	Color / Finish
1	Cover	1	Polycarbonate (UL94V-2)	White gray (RAL 7035) • Transparent
2	Body	1	Glass fiber filled polycarbonate (UL94V-0)	White gray (RAL 7035)
3	Gasket	1	Polyurethane	Black
4	Cover screw	4	Polyamide	White gray
5	Self-tapping screw (for mounting plate)	4	Steel	Unichrome plated



## SPCP.U dimensions

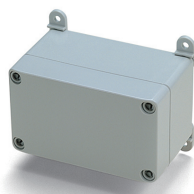
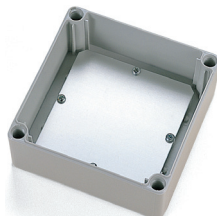
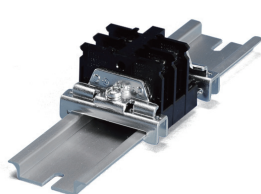
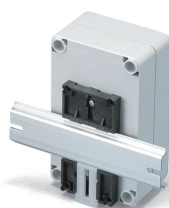
■ DXF/DWG/PDF drawings available on our website.



## Product no. / Details

Product no.				External dimensions			Internal dimensions			Weight (g)	BTO	
G.U type		T.U type		W	D	H	w	d	h			
Cover	Body	Cover	Body									
● White gray		○ Transparent	● White gray									
SPCP081304LG.U		SPCP081304LT.U		75	125	35	65.5	91	20.5	120	1 Carton (12Pcs)	6 months
SPCP081305LG.U		SPCP081305LT.U		75	125	50	65.5	91	35.5	150	1 Carton (18Pcs)	6 months
SPCP081306G.U		SPCP081306T.U		75	125	60	65.5	91	45.5	161	1 Carton (18Pcs)	6 months
SPCP081308G.U		SPCP081308T.U		75	125	75	65.5	91	60.5	213	1 Carton (18Pcs)	6 months
SPCP081310G.U		SPCP081310T.U		75	125	100	65	90.5	85.5	278	1 Carton ( 9Pcs)	6 months
SPCP081313G.U		SPCP081313T.U		75	125	125	64.5	90	110.5	306	1 Carton ( 9Pcs)	6 months
SPCP101004LG.U		SPCP101004LT.U		100	100	35	90.5	66	20.5	124	1 Carton (18Pcs)	6 months
SPCP101006G.U		SPCP101006T.U		100	100	60	90.5	66	45.5	165	1 Carton (12Pcs)	6 months
SPCP131804LG.U		SPCP131804LT.U		125	175	35	115.5	141	20.5	237	1 Carton (18Pcs)	6 months
SPCP131805LG.U		SPCP131805LT.U		125	175	50	115.5	141	35.5	282	1 Carton (12Pcs)	6 months
SPCP131806G.U		SPCP131806T.U		125	175	60	115.5	141	45.5	297	1 Carton (12Pcs)	6 months
SPCP131808G.U		SPCP131808T.U		125	175	75	115.5	141	60.5	378	1 Carton (25Pcs)	6 months
SPCP131810G.U		SPCP131810T.U		125	175	100	115	140.5	85.5	463	1 Carton (19Pcs)	6 months
SPCP131813G.U		SPCP131813T.U		125	175	125	115	140.5	110.5	531	1 Carton (14Pcs)	6 months
SPCP131815G.U		SPCP131815T.U		125	175	150	114	139.5	135.5	600	1 Carton ( 6Pcs)	6 months
SPCP181808G.U		SPCP181808T.U		175	175	75	165.5	141	60.5	475	1 Carton ( 7Pcs)	6 months
SPCP181810G.U		SPCP181810T.U		175	175	100	165	140.5	85.5	584	1 Carton ( 6Pcs)	6 months
SPCP181813G.U		SPCP181813T.U		175	175	125	164.5	140	110.5	652	1 Carton ( 5Pcs)	6 months
SPCP181815G.U		SPCP181815T.U		175	175	150	164	139.5	135.5	738	1 Carton ( 4Pcs)	6 months
SPCP182508G.U		SPCP182508T.U		175	250	75	165.5	216	60.5	637	1 Carton (12Pcs)	6 months
SPCP182510G.U		SPCP182510T.U		175	250	100	165	215.5	85.5	754	1 Carton (12Pcs)	6 months
SPCP182515G.U		SPCP182515T.U		175	250	150	164	214.5	135.5	959	1 Carton ( 6Pcs)	6 months

## Accessories (Optional parts) ■ Not UL certified products.

Terminal block • Terminal cover STB • STC series  
See page STB • STC-1 ~ STB • STC-4Mounting bracket SFL-1  
See page SPCM • SPCP-ACC-1Mounting plate SMP series  
See page SPCM • SPCP-ACC-1Cable gland  
See websiteProtective vent PMF series  
See page 325 ~ 326DIN-rail FDR series  
See page FDR-1-2DIN-Rail stopper bracket TKR series  
See page DIN-ACC-2DIN-rail mounting base DRA series  
See page DIN-ACC-1Pole mounting bracket  
See page SSK-1Outdoor roof for SPCM • SPCP SR series  
See page SPCM • SPCP-ACC-2



## Precautions for UL Certified Products

Please note that the important information remains the same even in case of ordering customized product(s).

1. UL certified products are not returnable or replaceable (except for defects).
2. Each UL certified product has a unique UL certification sticker with a serial number.  
This sticker cannot be easily removed and in the event where it is damaged or the characters are illegible, UL application may be rejected.
3. The position of the UL certification sticker is determined according to the product size and cannot be changed. Please check the position of the sticker on the drawing (such as CAD, PDF or other drawings) of the corresponding model number. Drawings are downloadable from our website.
4. The serial number on the UL certification sticker cannot be reissued with the same serial number.
5. Defective products (such as those with molding error) are subject of replacement.  
Note that the replacement(s) will incur a manufacturing and delivery lead-time; the serial number will also change.
6. UL certification sticker cannot be sold or issued separately (each product has an unique UL certification sticker attached).
7. Enclosure model number cannot be changed when applying for UL certification as each UL registered serial number is unique to each individual enclosure that is manufactured.
8. Customers are responsible for the UL application for the final product.  
TAKACHI does not offer any application support, documentation assistance, or any other forms of guidance etc. related to the application process.
9. For details on UL application and E-numbers, please contact UL directly.

### Specifications Overview

UL508A is a standard for industrial control panels published by Underwriters Laboratories Limited Liability Company (UL LLC) in USA.

NEMA standards are a set of technical standards developed by the National Electrical Manufacturers Association (NEMA) in USA.

The NEMA Type 4X rating is equivalent to the IP56 protection rating.

The NEMA Type 6 rating is equivalent to the IP67 protection rating.