

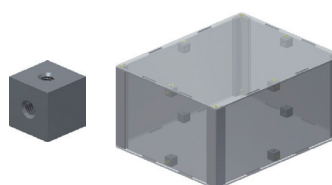
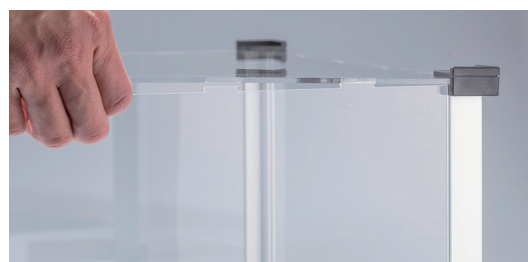
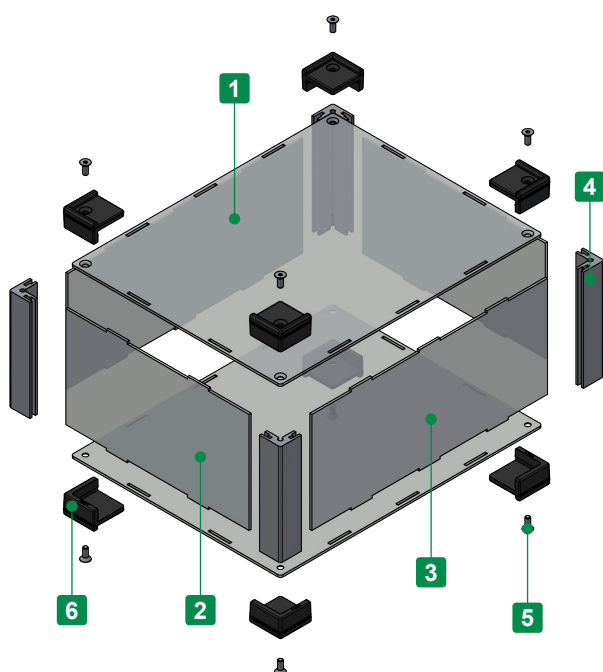


- Rugged design acrylic case with TPE (Elastomer) corner guards.
- Adjustable sizes available in 1mm intervals, with W and D dimensions from 55 ~ 500mm, and H dimension from 30 ~ 500mm.
- Extruded aluminium corner pillars enables the structure to be rigid when screwed.

※Ethanol or other alcoholic solvents may cause the acrylic panel to crack.
Use a neutral cleaner or specialized acrylic cleaning solvent for cleaning.

■ Caution

- On larger sized boxes, the top cover may come loose if the middle part is held without support.



To prevent rattles and also to make more rigid construct, CUBE spacer is available as option.
See page 120 for more details.

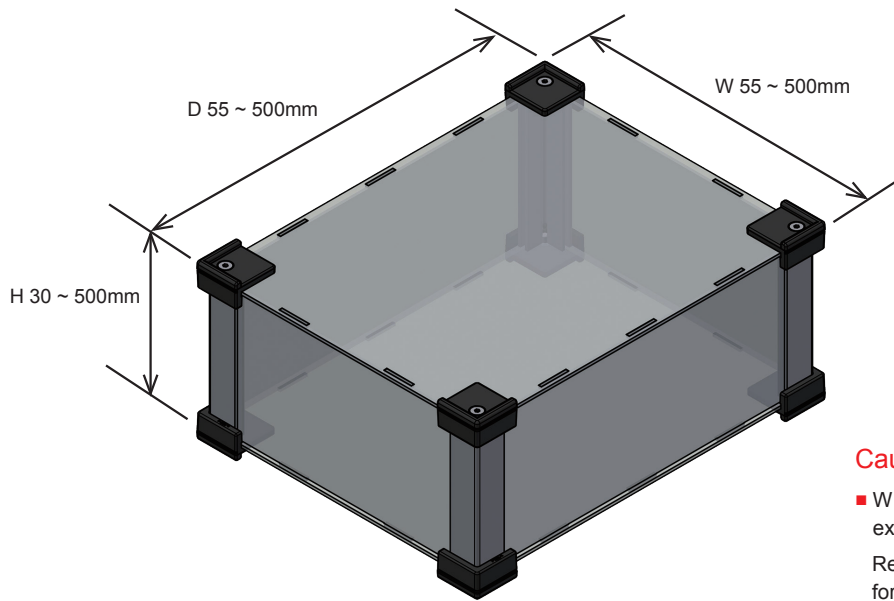
Components

No.	Part name	Pcs	Material	Color / Finish
1	Top • Bottom cover	1 each	Acrylic	Transparent
2	W panel	2	Acrylic	Transparent
3	D panel	2	Acrylic	Transparent
4	Extruded pillar	4	Extruded aluminium A6063S-T5	Silver anodized
5	Screw (Hexagonal flat head - M3 or M4)	8	Stainless steel	Unfinished
6	Corner guard	8	TPE	Black • Gray

■ Hexagonal wrench included.

1 Dimensions

To select D, W and H dimensions in 1mm intervals.



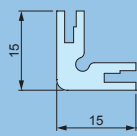
Caution

- W • H • D dimensions are the external dimensions excluding the corner guards.
Refer to DXF/DWG/PDF drawings on our website for further details.

- Panel thickness, screw sizes, and pillar types vary by W / D dimensions.
Refer to the chart on page SKGF-3 for K15 or K20 pillar type selection by W, H & D dimensions.

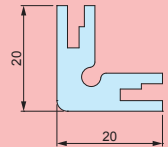
[K15] Pillar Type

Dimension : refer to chart
Panel thickness : $t = 2.0\text{mm}$
Screw size : M3
Pillar : 15 x 15mm



[K20] Pillar Type

Dimension : refer to chart
Panel thickness : $t = 3.0\text{mm}$
Screw size : M4
Pillar : 20 x 20mm



2 Color

To select color code from the table below.

Code	B Black	G Gray
Color		

Product Number

To determine a product number, fill W, H, D and select Pillar type and Color code in the following blank boxes.

Product no. SKGF - - -

1 W 1 H 1 D 1 K15 or K20 2 Color Code

Numbering example: W:100 x H:60 x D:180, K15 pillar type and G color code

➔ **SKGF100-60-180K15-G**

Lead Time

Custom Size Only
Custom Size + Hole Milling

8 business days (1 ~ 3 pcs)
9 business days (1 ~ 3 pcs)

Order Inquiry

For more information, contact us here at sales@takachi-el.co.jp

SKGF Type Chart

Refer to the below chart for K15 or K20 pillar type selection by W & D dimensions.

[K15] Pillar Type : t = 2.0mm • M3 screw • 15 x 15 pillar

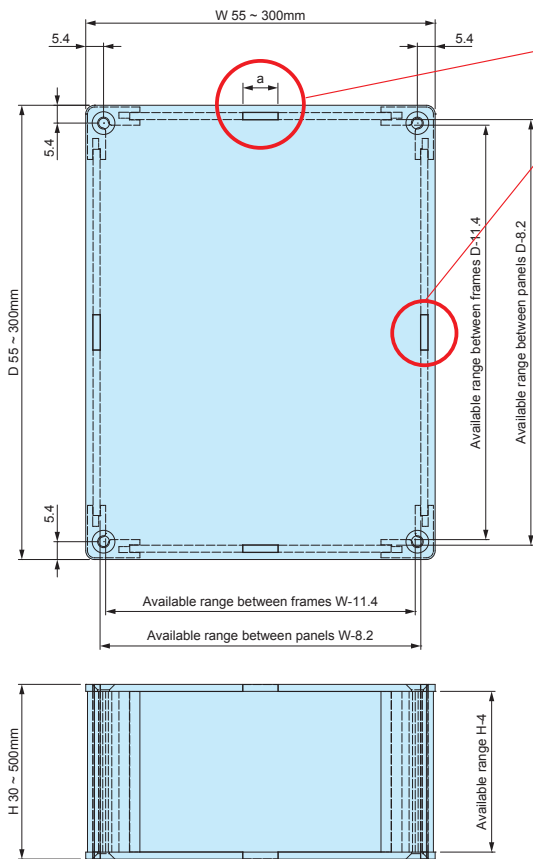
[K20] Pillar Type : t = 3.0mm • M4 screw • 20 x 20 pillar

W	H \ D	55 ~ 100	101 ~ 150	151 ~ 200	201 ~ 250	251 ~ 300	301 ~ 350	351 ~ 400	401 ~ 450	451 ~ 500
55 ~ 100	30 ~ 100									
	101 ~ 200									
	201 ~ 300									
	301 ~ 400									
	401 ~ 500									
101 ~ 150	30 ~ 100	[K15] Pillar Type								
	101 ~ 200									
	201 ~ 300									
	301 ~ 400									
	401 ~ 500									
151 ~ 200	30 ~ 100									
	101 ~ 200									
	201 ~ 300									
	301 ~ 400									
	401 ~ 500									
201 ~ 250	30 ~ 100									
	101 ~ 200									
	201 ~ 300									
	301 ~ 400									
	401 ~ 500									
251 ~ 300	30 ~ 100									
	101 ~ 200									
	201 ~ 300									
	301 ~ 400									
	401 ~ 500									
301 ~ 350	30 ~ 100									
	101 ~ 200									
	201 ~ 300									
	301 ~ 400									
	401 ~ 500									
351 ~ 400	30 ~ 100									
	101 ~ 200									
	201 ~ 300									
	301 ~ 400									
	401 ~ 500									
401 ~ 450	30 ~ 100									
	101 ~ 200									
	201 ~ 300									
	301 ~ 400									
	401 ~ 500									
451 ~ 500	30 ~ 100									
	101 ~ 200									
	201 ~ 300									
	301 ~ 400									
	401 ~ 500									

SKGF dimensions

■ DXF/DWG/PDF drawings available on our website.

[K15] Pillar Type : t = 2.0mm • M3 screw • 15 x 15 pillar

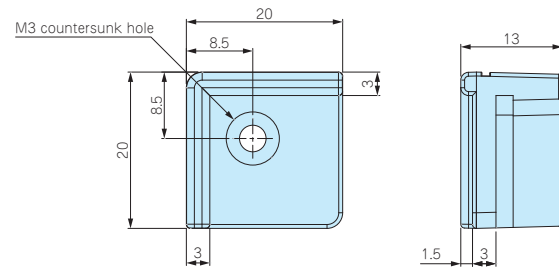


Number of joints vary by specified W / D dimensions.
Refer to the below chart for more information.

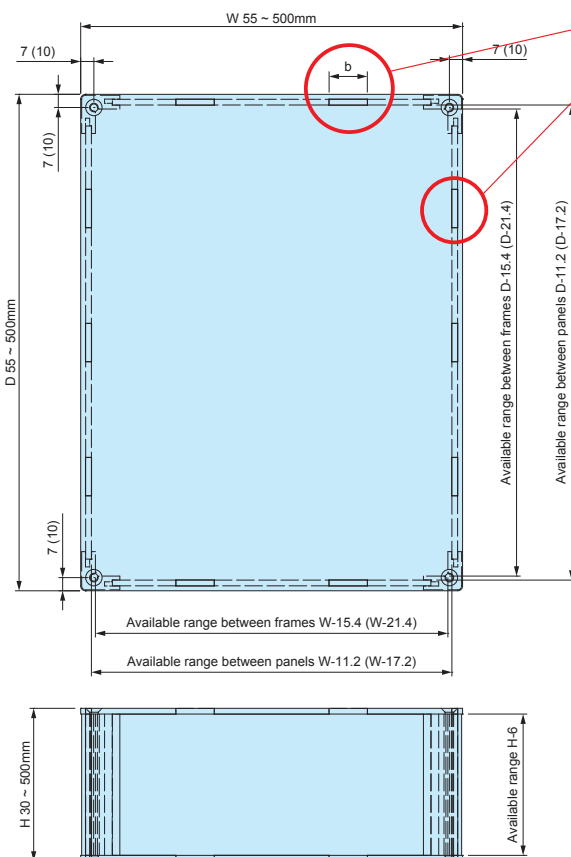
W dimension	Joint b dimension	Number of Joints (one side)
55 ~ 100	10mm	1
101 ~ 150	20mm	1
151 ~ 200	20mm	2
201 ~ 300	20mm	3

D dimension	Joint b dimension	Number of Joints (one side)
55 ~ 100	10mm	1
101 ~ 150	20mm	1
151 ~ 200	20mm	2
201 ~ 300	20mm	3

Corner guard dimensions



[K20] Pillar Type : t = 3.0mm • M4 screw • 20 x 20 pillar

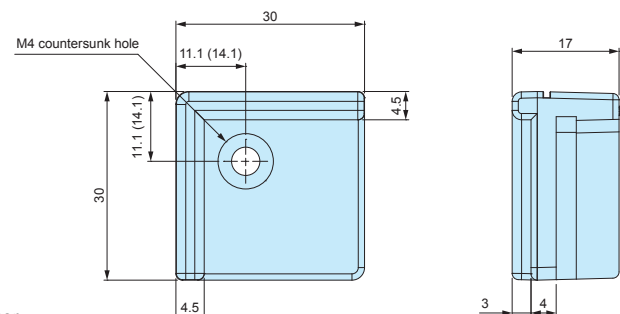


Number of joints vary by specified W / D dimensions.
Refer to the below chart for more information.

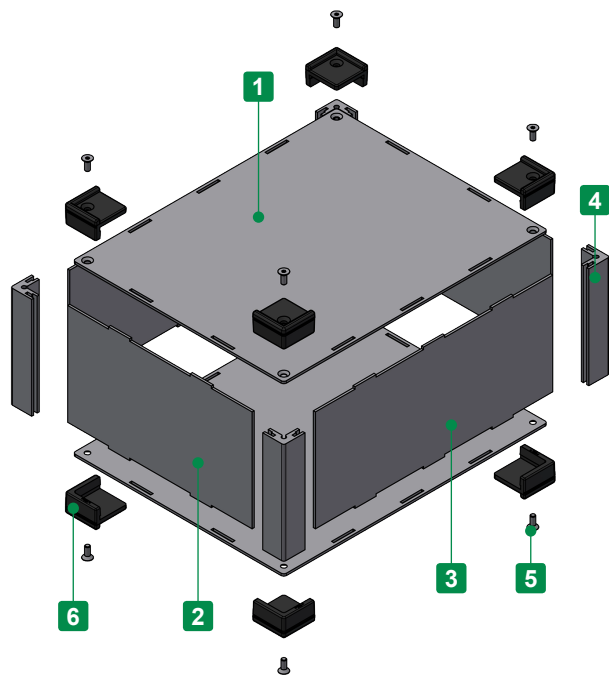
W dimension	Joint b dimension	Number of Joints (one side)
55 ~ 100	10mm	1
101 ~ 150	20mm	1
151 ~ 200	20mm	2
201 ~ 300	20mm	3
301 ~ 400	20mm	4
401 ~ 500	20mm	5

D dimension	Joint b dimension	Number of Joints (one side)
55 ~ 100	10mm	1
101 ~ 150	20mm	1
151 ~ 200	20mm	2
201 ~ 300	20mm	3
301 ~ 400	20mm	4
401 ~ 500	20mm	5

Corner guard dimensions



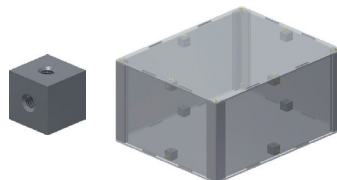
*Available range values within () is applicable if D / W dimension is 301mm or larger.



- Adjustable sizes available in 1mm intervals, with W and D dimensions from 55 ~ 500mm, and H dimension from 30 ~ 500mm.
- Rugged design aluminium enclosure with TPE (Elastomer) corner guards. Corner guards also act as non-slip rubber feet.
- Extruded aluminium corner pillars enables the structure to be rigid when assembled.

■ Caution

- On larger sized boxes, the top cover may come loose if the middle part is held without support.



To prevent rattles and also to make more rigid construct, CUBE spacer is available as option. See page 120 for more details.

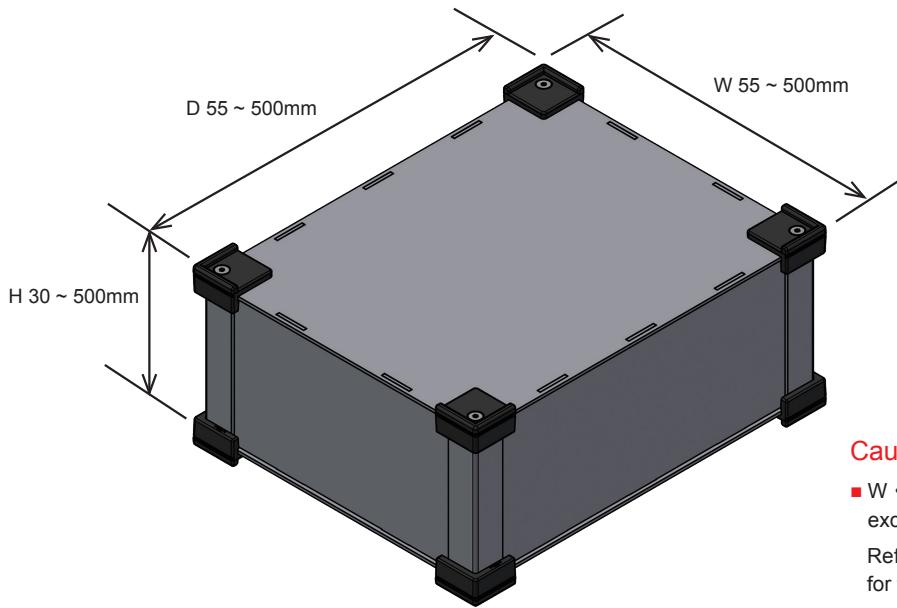
Components

No.	Part name	Pcs	Material	Color / Finish
1	Top • Bottom cover	1 each	Aluminium A1100P	Silver anodized
2	W panel	2	Aluminium A1100P	Silver anodized
3	D panel	2	Aluminium A1100P	Silver anodized
4	Extruded pillar	4	Extruded aluminium A6063S-T5	Silver anodized
5	Screw (Hexagonal flat head M3 or M4)	8	Stainless steel	Unfinished
6	Corner guard	8	TPE	Black • Gray

■ Hexagonal wrench included.

1 Dimensions

To select W • H • D dimensions in 1mm intervals.



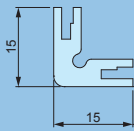
Caution

- W • H • D dimensions are the external dimensions excluding the corner guards.
Refer to DXF/DWG/PDF drawings on our website for further details.

- Panel thickness, screw sizes, and pillar types vary by W / D dimensions.
Refer to the chart on page ALGF-3 for K15 or K20 pillar type selection based on W, H & D dimensions.

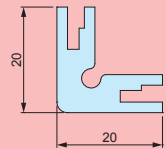
[K15] Pillar Type

Dimension : refer to chart
Panel thickness : $t = 1.5\text{mm}$
Screw size : M3
Pillar : 15 x 15mm



[K20] Pillar Type

Dimension : W & D = refer to chart
Panel thickness : $t = 2.0\text{mm}$
Screw size : M4
Pillar : 20 x 20mm



2 Color

To select color code from the table below.

Code	B Black	G Gray
Color		

Product Number

To determine a product number, fill W, H, D and select Pillar type and Color code in the following blank boxes.

Product no. ALGF - -

1 W
1 H
1 D
1 K15 or K20
2 Color Code

Numbering example: W:200 x H:100 x D:250, K15 pillar type and B color code

➔ **ALGF200-100-250K15B**

Lead Time

Custom Size Only
Custom Size + Hole Milling

8 business days (1 ~ 3 pcs)
9 business days (1 ~ 3 pcs)

Order Inquiry

For more information, contact us here at sales@takachi-el.co.jp

ALGF Type Chart

Refer to the below chart for K15 or K20 pillar type selection by W & D dimensions.

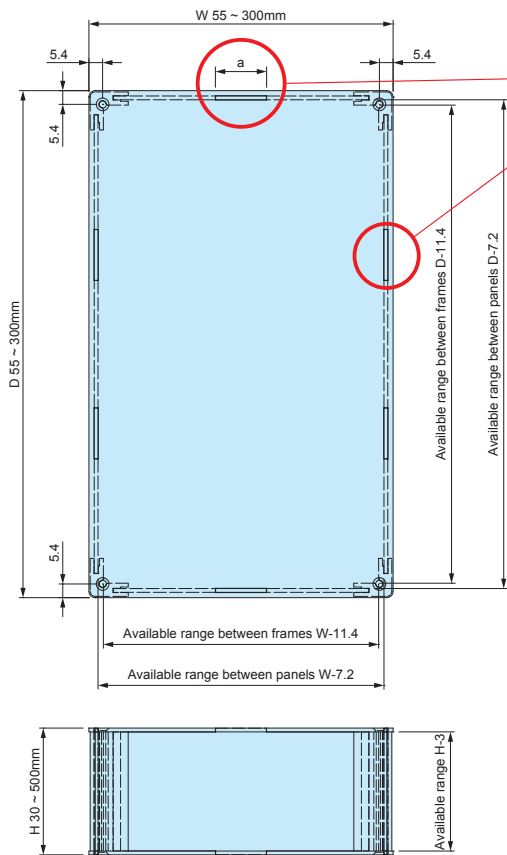
[K15] Pillar Type : t = 1.5mm • M3 screw • 15 x 15 pillar

[K20] Pillar Type : t = 2.0mm • M4 screw • 20 x 20 pillar

W	H \ D	55 ~ 100	101 ~ 150	151 ~ 200	201 ~ 250	251 ~ 300	301 ~ 350	351 ~ 400	401 ~ 450	451 ~ 500
55 ~ 100	30 ~ 100									
	101 ~ 200									
	201 ~ 300									
	301 ~ 400									
	401 ~ 500									
101 ~ 150	30 ~ 100									
	101 ~ 200	[K15] Pillar Type								
	201 ~ 300									
	301 ~ 400									
	401 ~ 500									
151 ~ 200	30 ~ 100									
	101 ~ 200									
	201 ~ 300									
	301 ~ 400									
	401 ~ 500									
201 ~ 250	30 ~ 100									
	101 ~ 200									
	201 ~ 300									
	301 ~ 400									
	401 ~ 500									
251 ~ 300	30 ~ 100									
	101 ~ 200									
	201 ~ 300									
	301 ~ 400									
	401 ~ 500									
301 ~ 350	30 ~ 100									
	101 ~ 200									
	201 ~ 300									
	301 ~ 400									
	401 ~ 500									
351 ~ 400	30 ~ 100									
	101 ~ 200									
	201 ~ 300									
	301 ~ 400									
	401 ~ 500									
401 ~ 450	30 ~ 100									
	101 ~ 200									
	201 ~ 300									
	301 ~ 400									
	401 ~ 500									
451 ~ 500	30 ~ 100									
	101 ~ 200									
	201 ~ 300									
	301 ~ 400									
	401 ~ 500									

ALGF dimensions

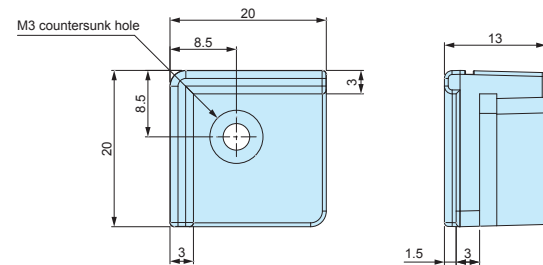
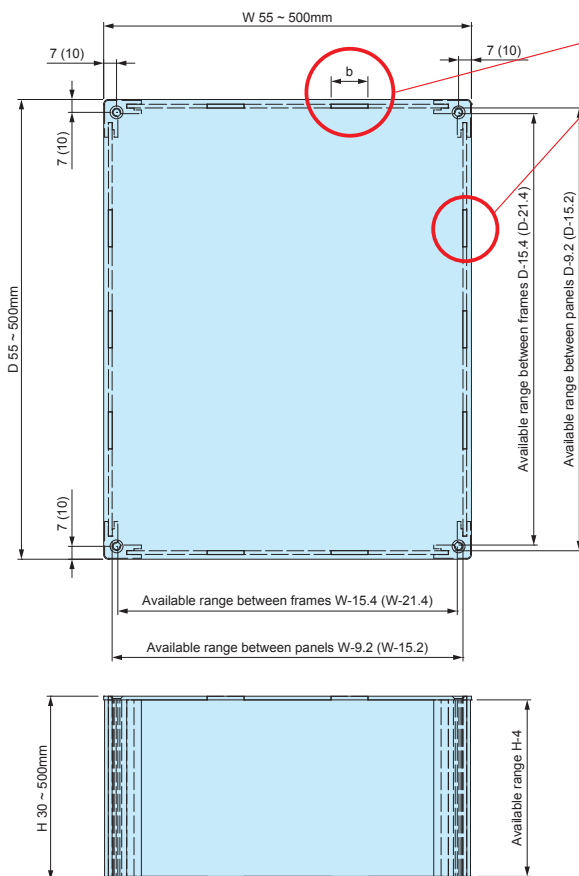
■ DXF/DWG/PDF drawings available on our website.

[K15] Pillar Type : t = 1.5 mm • M3 screw • 15 x 15 mm pillar

Number of joints vary by specified W / D dimensions.
Refer to the below chart for more information.

W dimension	Joint a dimension	Number of Joints (one side)
55 ~ 100	10mm	1
101 ~ 150	20mm	1
151 ~ 200	20mm	2
201 ~ 300	20mm	3

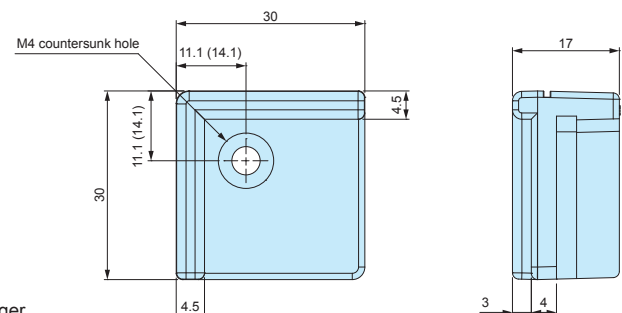
D dimension	Joint a dimension	Number of Joints (one side)
55 ~ 100	10mm	1
101 ~ 150	20mm	1
151 ~ 200	20mm	2
201 ~ 300	20mm	3

Corner guard dimensions**[K20] Pillar Type : t = 2.0 mm • M4 screw • 20 x 20 mm pillar**

Number of joints vary by specified W / D dimensions.
Refer to the below chart for more information.

W dimension	Joint b dimension	Number of Joints (one side)
55 ~ 100	10mm	1
101 ~ 150	20mm	1
151 ~ 200	20mm	2
201 ~ 300	20mm	3
301 ~ 400	20mm	4
401 ~ 500	20mm	5

D dimension	Joint b dimension	Number of Joints (one side)
55 ~ 100	10mm	1
101 ~ 150	20mm	1
151 ~ 200	20mm	2
201 ~ 300	20mm	3
301 ~ 400	20mm	4
401 ~ 500	20mm	5

Corner guard dimensions

※Available range values within () is applicable if D / W dimension is 301mm or larger.