

# Raspberry Pi HEAT-SINK ALUMINIUM CASE

Made with Aluminium Diecast Material

for Excellent Heat Dissipation and Rigidity

Exceptional Functionality with Superb Cost Efficiency!

Now available  
for  
Raspberry Pi 5

## RPH series



**3 different types are available: Desktop, Flanged and DIN Rail**

**Desktop type**  
**RPH-5**  
**RPH-4B**



**Flanged type**  
**RPH-5-F**  
**RPH-4B-F**



**DIN Rail type**  
**RPHD-5**  
**RPHD-4B**



Available in metallic silver and black  
for Raspberry Pi 4 Model B and Raspberry  
Pi 5.

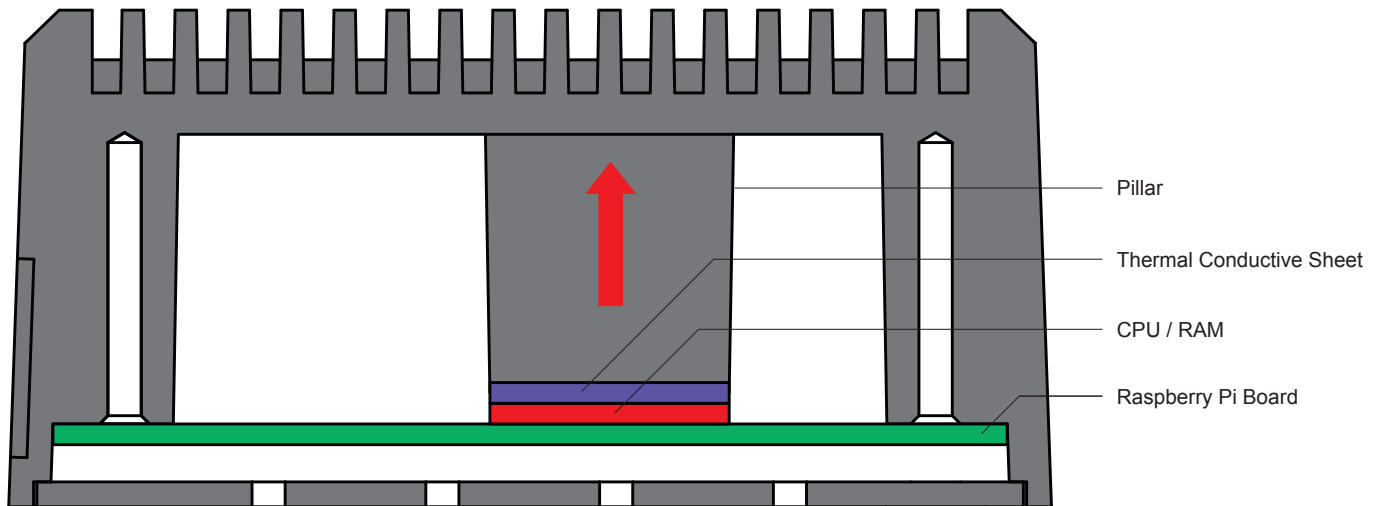
Compatible with VESA Mount Standards  
(75 x 75mm / 100 x 100mm), and can be  
installed on the back side of PC displays, etc.

Available with DIN rail mounting bracket.  
Perfect for mounting on control panels  
or switchboards.

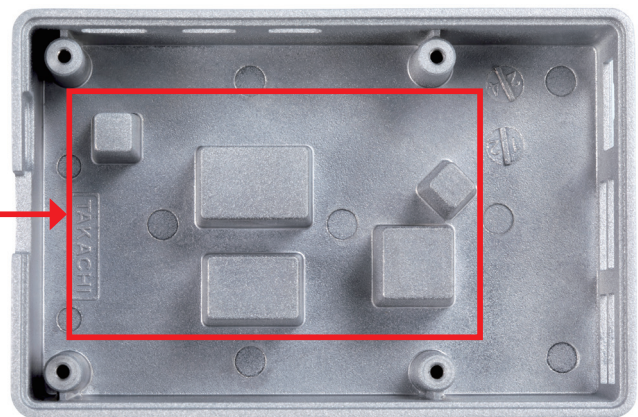
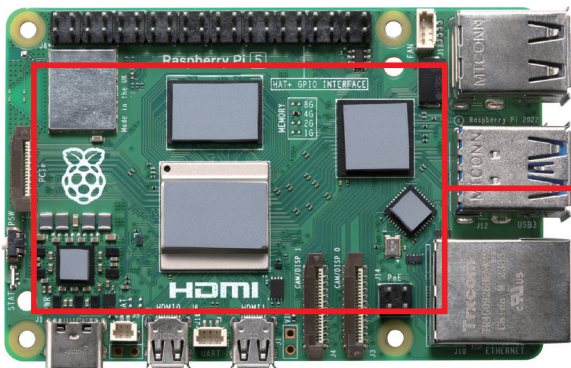
# Efficient Heat Dissipation Construct to Maximize your Raspberry Pi Performance!



**Heat Dissipation**



- Attach thermal conductive sheet onto CPU and RAM. Heat is transferred to the heat-sink cover through the pillar.



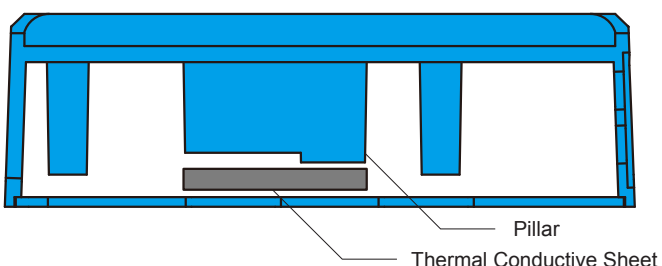
\*The model shown above is for Raspberry Pi 5. The model for Raspberry Pi 4 model B has a different configuration.

## 2 different Heat dissipation and Normal are available.

\*The Pillar and the Thermal Conductive Sheet configuration varies by models.

**RPH-5-H (Heat dissipation)**  
**RPH-4B-H (Heat dissipation)**

**RPH-4B-N (Normal)**





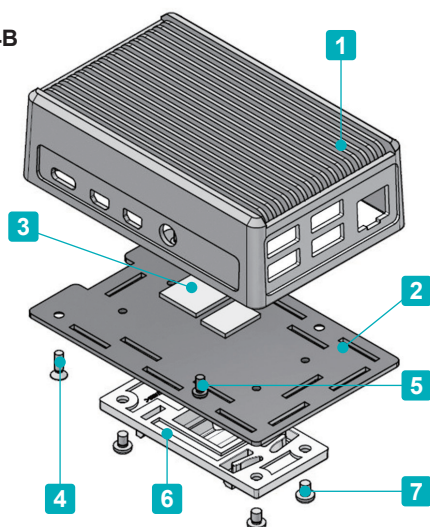


- New RPHD-5H-S model compatible with Raspberry Pi 5 is now available.
- DIN rail mount heat-sink case exclusively for use with Raspberry Pi 4 model B and Raspberry Pi 5. Equipped with highly efficient heat-sink top cover.
- Constructed using diecast aluminium for strength and rigidity.
- The Heat dissipation type is available for both the Pi 4B and 5, while the Normal type is only available for the Pi 4B.
- Raspberry Pi board is not included.
- Note that oil bleed may occur with thermal conductive sheets.

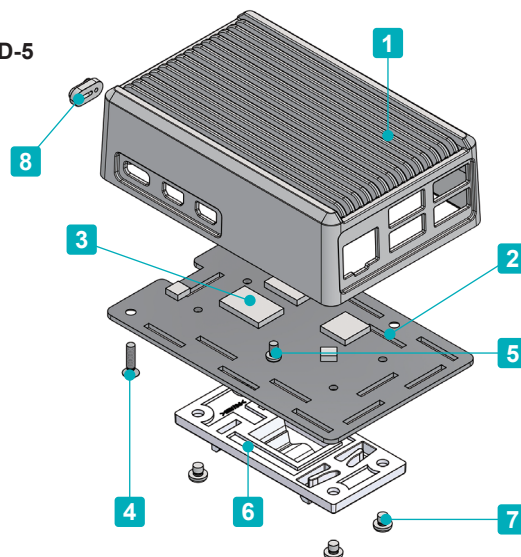
## Technical Data

Max load : 300g  
Operating Temperature : -20°C ~ +80°C

RPHD-4B



RPHD-5

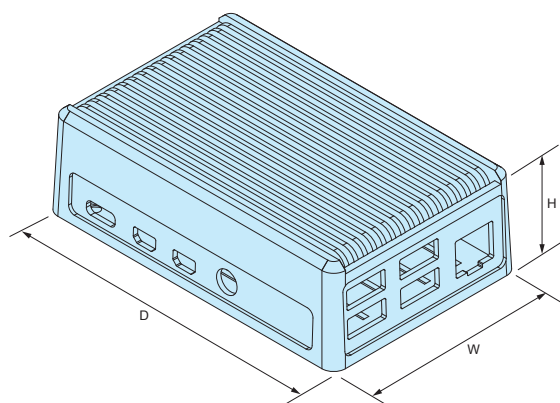


## Components

No.	Part name	Pcs	Material	Color / Finish
1	Top cover	1	Diecast aluminium ADC12	Silver / Powder coated
2	Base	1	Aluminium A1100P t=1.5	Metallic silver / Painted (Conductive inside)
3	Thermal conductive sheet (RPHD-4B-H)	2	Silicone polymer + Ceramic composite	Gray
	Thermal conductive sheet (RPHD-5-H)	5	Silicone	Gray
4	Screw (M2.5-10 flat head)	2	Steel	Trivalent chromate
5	Screw for Board (M2.5-4 pan head)	2	Steel	Trivalent chromate
6	Din-rail mounting base	1	PC • ABS UL94V-0	Light gray
7	Screw for Din-rail mounting base (M3-3 pan head)	4	Steel	Trivalent chromate
8	Power button access cap (RPHD-5)	1	Polycarbonate	Transparent

## RPHD dimensions

■ DXF/DWG/PDF/STP drawings available on our website.



## Product no. / Details

Product no.	External dimensions			Pillar Thermal conductive sheets	※Thermal resistance rate (°C/W)	Weight (g)
	W	H	D			
<b>NEW</b> RPHD-5H-S	63	30	96	○	7.41	173.4
RPHD-4B-H-S	63	30	98	○	7.31	168.2
RPHD-4B-N-S	63	30	98	×	7.31	150.7

\*Din-rail mounting base height is not included in H dimension.

※ Thermal resistance test condition

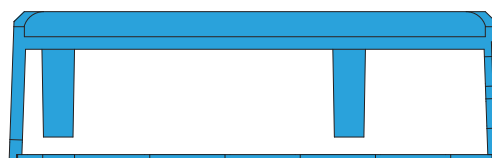
- Ambient air cooling.
- Heat-sink fins are set perpendicular to the ground with temperature at 60°C.
- Powder coated aluminium diecast.
- Heat source is applied on the opposite side (inner side) of the fins.

■ 2 different Heat Dissipation and Normal are available.

RPHD-5-H, RPHD-4B-H (Heat dissipation)

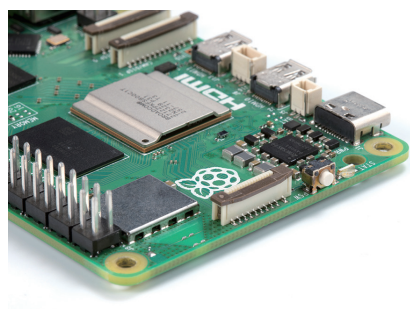


RPHD-4B-N (Normal)

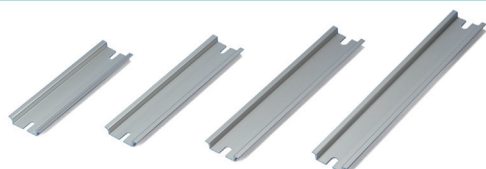


## Power button for Raspberry Pi 5

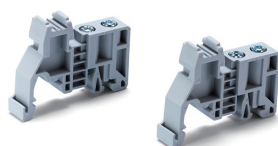
In conjunction with the addition of a power button to the Raspberry Pi 5 board, RPHD-5-H-S model comes with a cover for the power button.



## Accessories (Optional parts)



DIN-Rail FDR series  
See page FDR-1 ~ FDR-2



Economical DIN-Rail end stopper DRS series  
See page TKR • DRS



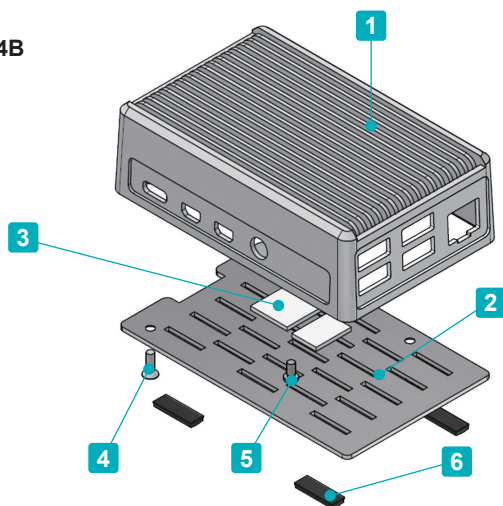
DIN-Rail terminal block end stopper TKR series  
See page TKR • DRS



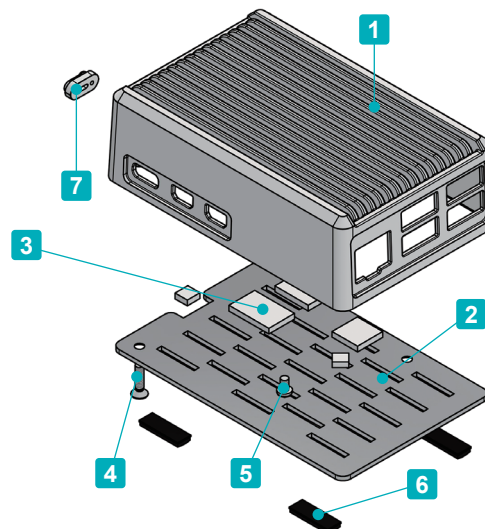


- New RPH-5-H • FH model compatible with Raspberry Pi 5 is now available.
- Heat-sink top cover case exclusively for use with the Raspberry Pi.  
Equipped with highly efficient heat-sink top cover.
- Constructed using diecast aluminium for strength and rigidity.
- The Heat dissipation type is available for both the Pi 4B and 5, while the Normal type is only available for the Pi 4B.
- Both Pi 4B and 5 are available in a Desktop and Flanged wall mount configuration.  
Flanged wall mount type is compatible with VESA Mount Standards (75 x 75mm / 100 x 100mm) and can be installed on the back side of PC displays, etc.
- Raspberry Pi board is not included.
- Note that oil bleed may occur with thermal conductive sheets.

RPH-4B



RPH-5



## Components

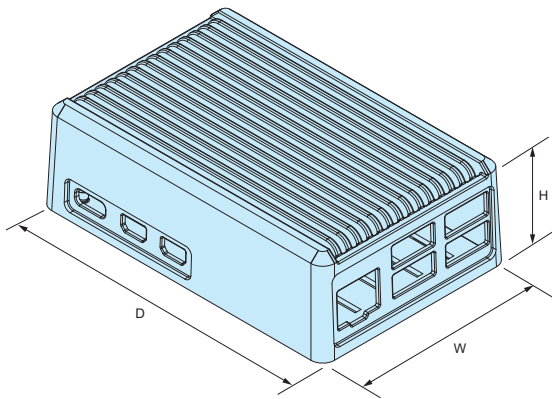
No.	Part name	Pcs	Material	Color / Finish
1	Top cover	1	Diecast aluminium ADC12	Silver • Black / Powder coated
2	Base	1	Aluminium A1100P t=1.5	Metallic silver / Painted (Conductive inside) • Black / Painted
3	Thermal conductive sheet (RPH-4B-H type only)	2	Silicone polymer + Ceramic composite	Gray
	Thermal conductive sheet (RPH-5 type only)	5	Silicone	Gray
4	Screw (M2.5-10 flat head)	2	Steel	Trivalent chromate • Black trivalent chromate
5	Screw for Board (M2.5-4 pan head)	2	Steel	Trivalent chromate
6	Rubber feet *	4	Polyurethane	Black
7	Power button access cap	1	Polycarbonate	Transparent

\* Not applicable to flanged models.

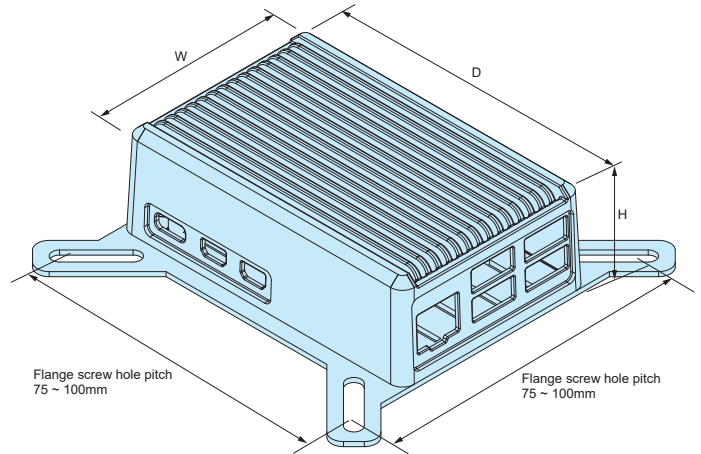
## RPH dimensions

■ DXF/DWG/PDF/STP drawings available on our website.

### RPH-5-H, RPH-4B-H, RPH-4B-N (Desktop)



### RPH-5-FH, RPH-4B-FH, RPH-4B-FN (Flanged)



## Product no. / Details

Product no.		External dimensions			Type	Included accessory	※ Thermal resistance rate (°C/W)	Weight (g)
● Silver	● Black	W	H	D				
<b>NEW</b> RPH-5-H-S	<b>NEW</b> RPH-5-H-B	63	30	96	Desktop Heat dissipation	Rubber feet Thermal conductive sheets	7.41	165.5
RPH-4B-H-S	RPH-4B-H-B	63	30	98	Desktop Heat dissipation	Rubber feet Thermal conductive sheets	7.31	159.9
RPH-4B-N-S	RPH-4B-N-B	63	30	98	Desktop Normal	Rubber feet	7.31	142
<b>NEW</b> RPH-5-FH-S	<b>NEW</b> RPH-6-FH-B	63	31.5	96	Flanged Heat dissipation	Thermal conductive sheets	7.41	174.2
RPH-4B-FH-S	RPH-4B-FH-B	63	31.5	98	Flanged Heat dissipation	Thermal conductive sheets	7.31	168.2
RPH-4B-FN-S	RPH-4B-FN-B	63	31.5	98	Flanged Normal	—	7.31	150.3

※ Thermal resistance test condition

- Ambient air cooling.
- Heat-sink fins are set perpendicular to the ground with temperature at 60°C.
- Powder coated aluminium diecast.
- Heat source is applied on the opposite side (inner side) of the fins.

## Temperature measurement test

Raspberry Pi board is placed into the RPH-H model and a commercially available Raspberry Pi plastic case.

Temperature is measured after 6 hours of continuous operation.

\*Results will vary depending on usage period and environment. Listed values are in-house test reference values only.



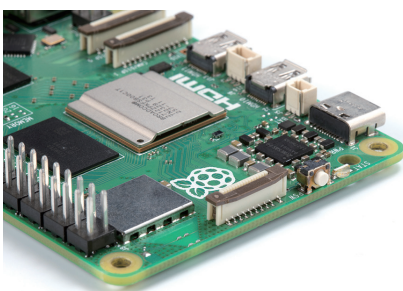
**RPH-H**  
CPU Temperature : 45.7°C



**Plastic case**  
CPU Temperature : 58.4°C

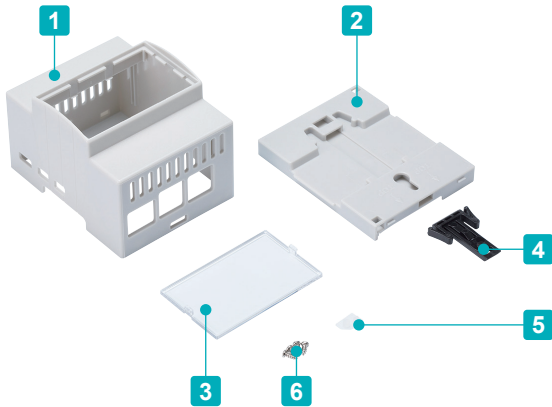
## Power button for Raspberry Pi 5

In conjunction with the addition of a power button to the Raspberry Pi 5 board, RPH-5-H and RPH-5-FH models come with a cover for the power button.



# RPDM-5

# Raspberry Pi 5 DIN RAIL CASE



- DIN rail mount case exclusively for use with the Raspberry Pi 5.  
Able to assemble easily with a flathead screw driver; no screws required.  
\*Caution : Material may easily break when assembling.

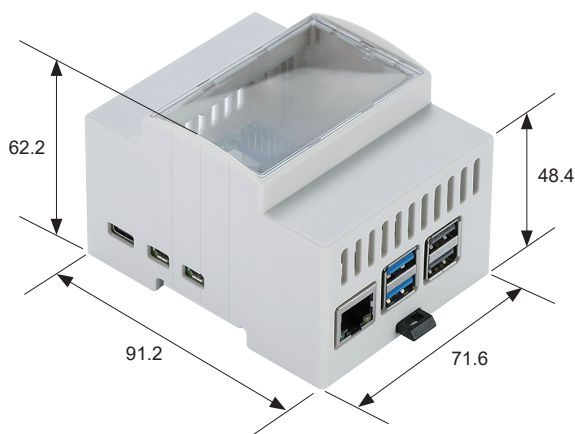
- Raspberry Pi board is not included.

## Components

No.	Part name	Pcs	Material	Color / Finish
1	Body	1	ABS	Gray
2	Base	1	ABS	Gray
3	Front panel	1	ABS	Transparent
4	Lever	1	ABS	Black
5	Transparent window	1	Acrylic	Translucent
6	Screw for Board	4*	Steel	Silver

\*2 out of 4 pieces are spares.

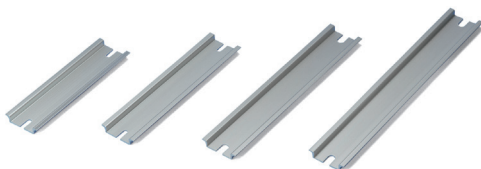
## RPDM-5 dimensions



## Product no. / Details

Product no.	Weight (g)
RPDM-5	63.7

## Accessories (Optional parts)

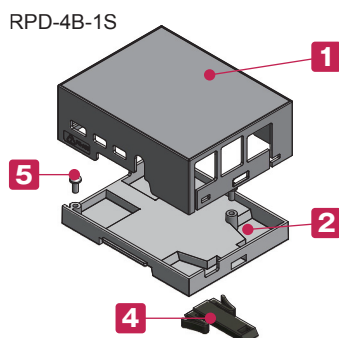


DIN RAIL  
FDR series  
See page FDR-1 ~ FDR-2

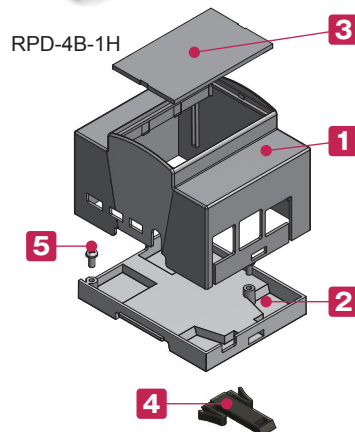




RPD-4B-1S



RPD-4B-1H



■ Exclusively for use with Raspberry Pi 4B.

■ Exclusively for use with 35mm DIN rail.

Able to assemble easily with a flathead screwdriver;  
no screws required.

\*Caution : Material may easily break when assembling.

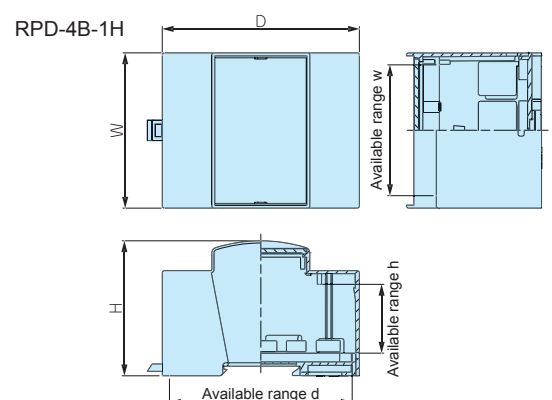
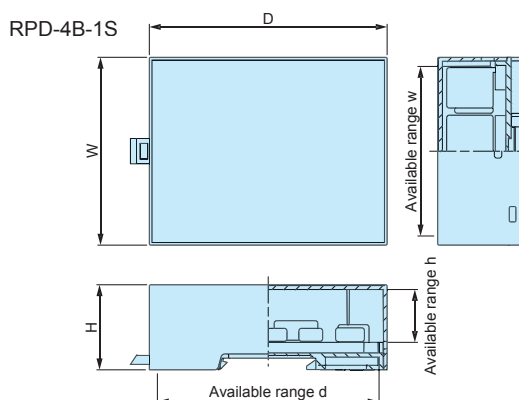
■ Raspberry Pi Board is excluded.

## Components

No.	Part name	Pcs	Material	Color / Finish
1	Body	1	PC + ABS	Gray
2	Base	1	PC + ABS	Gray
3	Front panel (RPD-4B-1H only)	1	Polycarbonate t = 2.0	Transparent
4	Hook	1	PPO	Black
5	Screw for Board (M3-6)	2	Stainless steel	Unfinished

## RPD dimensions

■ Drawings below are reference examples only.  
DXF/DWG/PDF drawings available on our website.



## Product no. / Dimensions

Product no.	Dimensions						Weight (g)
	W	H	D	w	h	d	
RPD-4B-1S	71.1	32.2	90	64.1	20.1	83.9	46.8
RPD-4B-1H	71.3	62	90.5	60.3	31.7	83.9	68.1

## TAKACHI ELECTRONICS ENCLOSURE CO., LTD.

3-21-16 Higashi-ryoke,  
Kawaguchi, Saitama 332-0003, JAPAN  
Tel. +81-48-222-5409

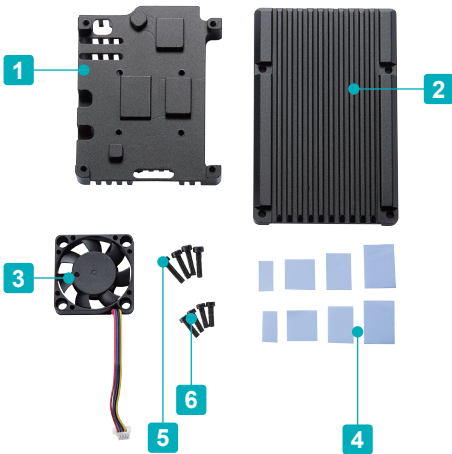
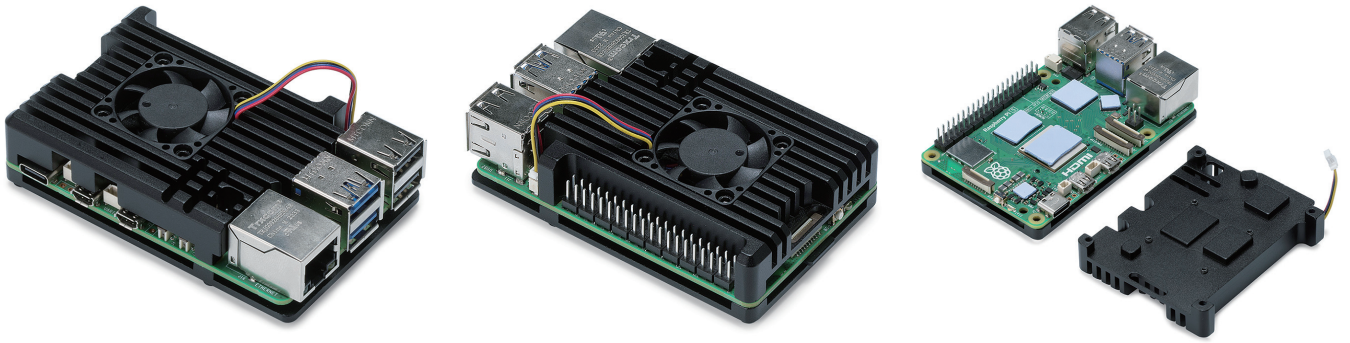
[www.takachi-enclosure.com](http://www.takachi-enclosure.com)

[sales@takachi-el.co.jp](mailto:sales@takachi-el.co.jp)

● All items listed in this catalogue are compliant with EU RoHS 10 standard.

# RPF-5

# Raspberry Pi 5 HEATSINK CASE with COOLING FAN



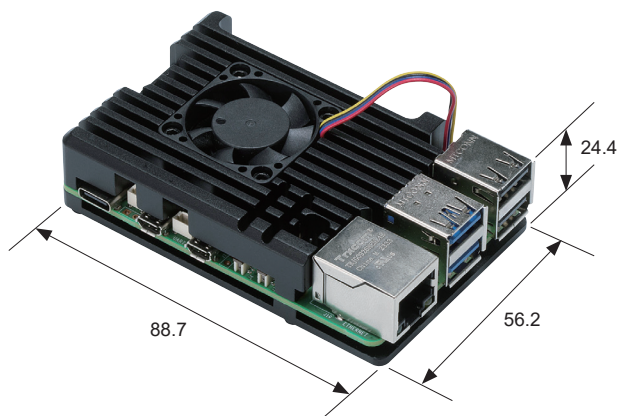
- Heatsink case with cooling fan for Raspberry Pi 5.
- Equipped with a highly efficient heat-sink top cover and thermal conductive sheets.
- Raspberry Pi board is not included.

## Components

No.	Part name	Pcs	Material	Color / Finish
1	Cover	1	Aluminium	Black / Anodized
2	Base	1	Aluminium	Black / Anodized
3	Fan	1	Plastic	Black
4	Thermal conductive sheet	8*	Silicone	Blue
5	Screw	4	Steel	Black
6	Screw for fan	4	Steel	Black

\*4 out of 8 pieces are spares.

## RPF-5 dimensions



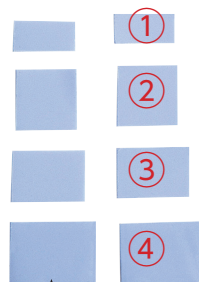
\*Value above includes the dimensions of the PCB board.

## Product no. / Details

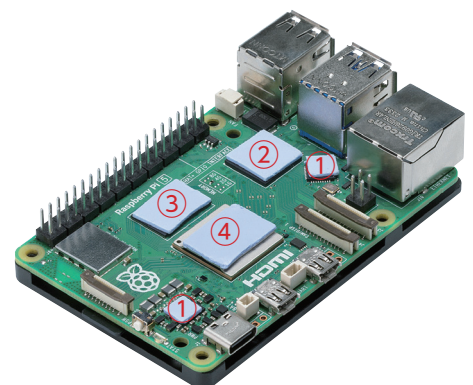
Product no.	Weight (g)
RPF-5	102.4

## Where to paste the thermal conductive sheets.

Cut ① to half before using.



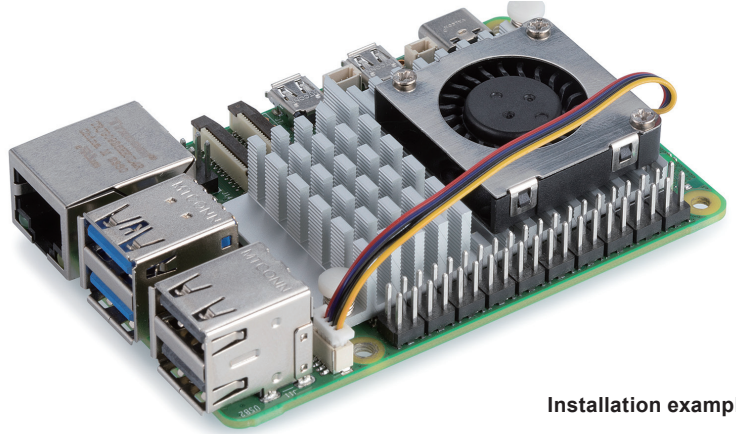
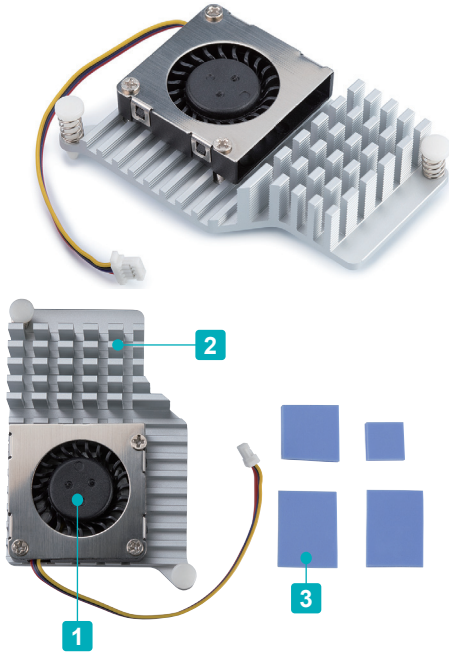
4 spare sheets included.



RPF-5

# RP5-FAN

# Raspberry Pi 5 ACTIVE COOLER



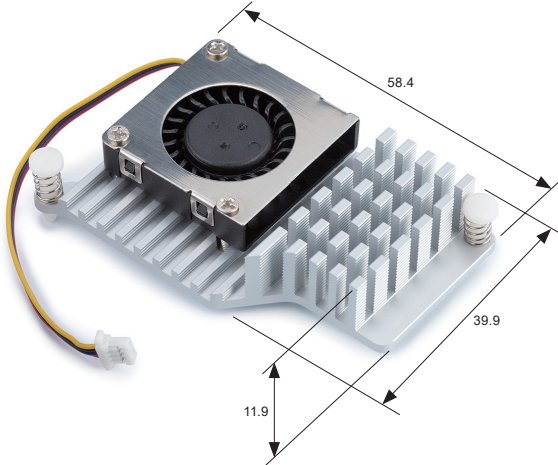
Installation example

- Active cooler for standard Raspberry Pi 5 board.
- Excellent cooling effect while operating.
- Can be directly attached onto the Raspberry Pi Board.
- Raspberry Pi board is not included.

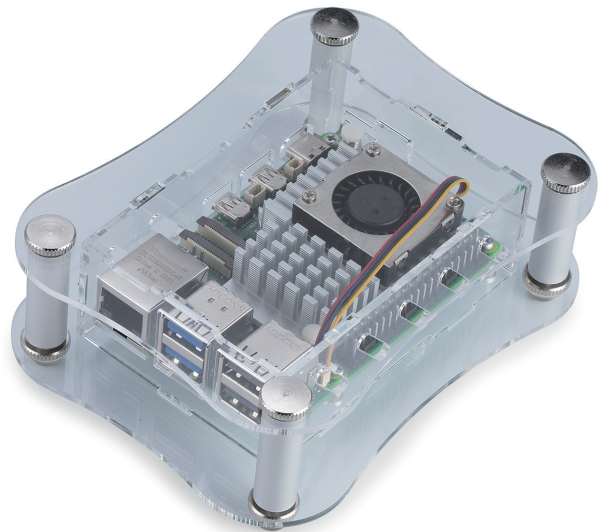
## Components

No.	Part name	Pcs	Material	Color / Finish
1	Fan	1	Plastic	Black
2	Heat-sink	1	Aluminium	Silver / Anodized
3	Thermal conductive sheet	4	Silicone	Blue

## RP5-FAN dimensions



- Raspberry Pi 5 ACTIVE COOLER is compatible with RPA-5 series.



## Product no. / Details

Product no.	Weight (g)
RP5-FAN	24

## Temperature Measurement Test Comparison Chart

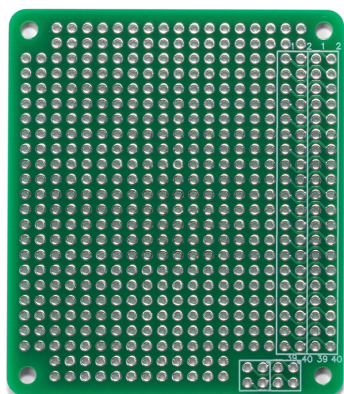
Measured temperatures up to 3 hours after Raspberry Pi 5 has been switched on.  
\*Values listed below are for reference only; values are subject to change by the environment and the usage.

### • CPU temperature comparison chart

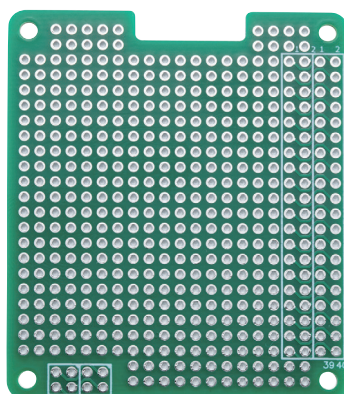
Model	RPF-5	RP5-FAN	RPA-5+RP5-FAN	RPA-5 Only	PCB Only
Time	Temperature (°C)				
After 1 hour	47.2	58.2	67.0	84.5	76.8
After 2 hours	47.7	58.2	62.6	84.5	76.3
After 3 hours	47.7	58.2	65.3	86.2	76.8



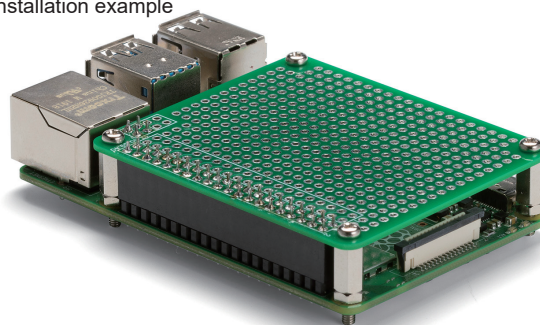
RPCB-4B



RPCB-5



Installation example



- Raspberry Pi Board is not included.
- Connector, spacer, and mounting screw set are sold separately.

■ Material / Finish : Glass epoxy (FR-4) / Through-hole - Lead-free solder resist

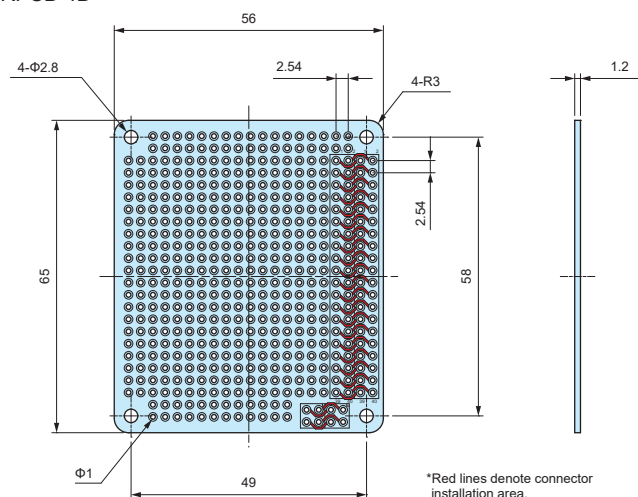
■ Expansion PCB for standard Raspberry Pi boards. Use to install expansion parts or components.

■ Environmentally friendly lead-free solder. RoHS3 compliant.

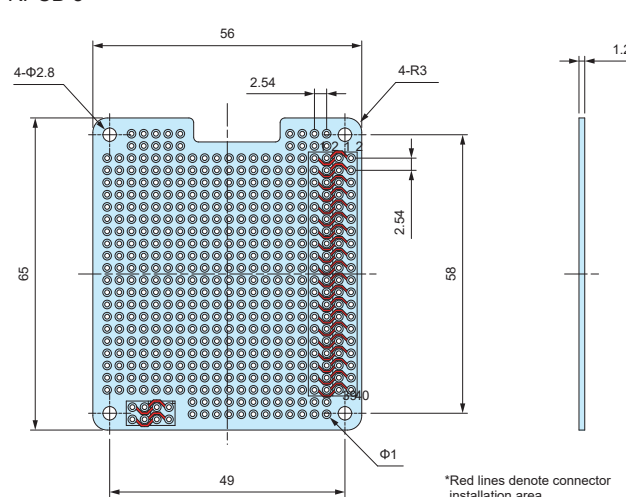
## RPCB dimensions

■ DXF/DWG/PDF drawings available on our website.

RPCB-4B



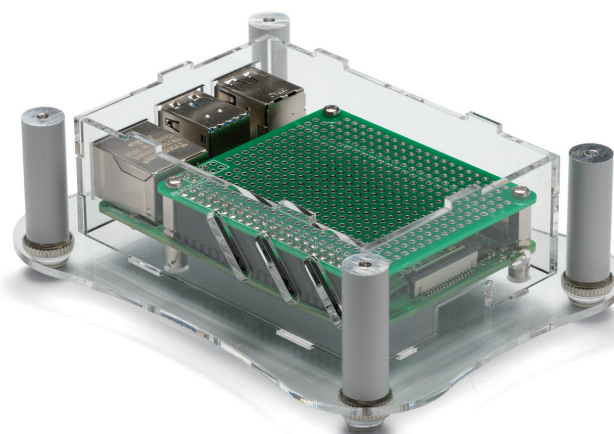
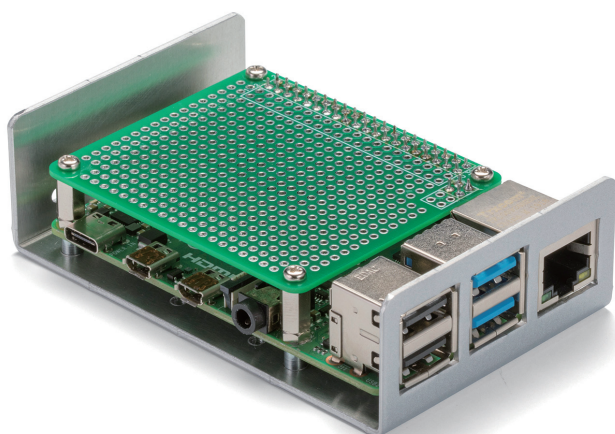
RPCB-5

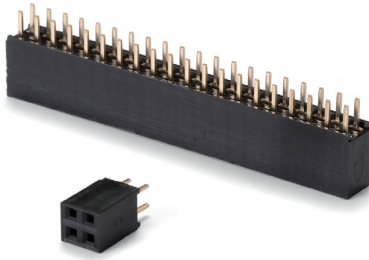


## Product no. / Details

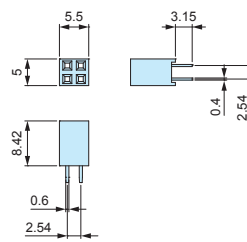
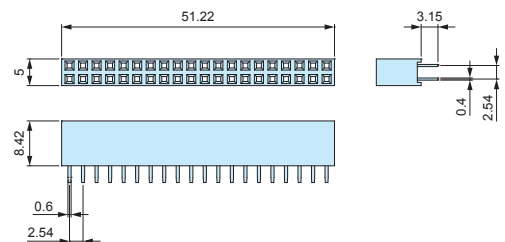
Product no.	Pack of	Suitable model
RPCB-4B	1	Raspberry Pi 4B
NEW RPCB-5	1	Raspberry Pi 5

■ Expansion PCB can also be utilized on RPI-4B and RPA series cases.



**RPS** series**PIN SOCKET CONNECTOR for RPCB****RPS dimensions**

■ DXF/DWG/PDF drawings available on our website.

**RPS2-2****RPS2-20**

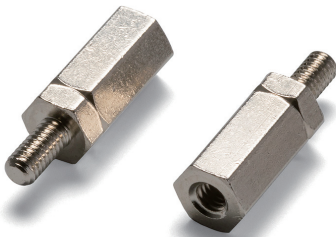
- Material / Color : (Socket) FRPBT UL94V-0 /Black • (Pin) Phosphor bronze
- 2.54mm hole-to-hole pitch pin socket connector.  
Utilize with RPCB expansion PCB for Raspberry Pi series.

**Technical Data**

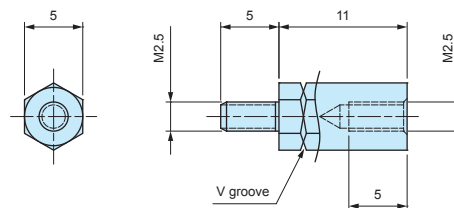
Operating temperature : -55°C ~ +105°C  
 Rated voltage : DC500V  
 Rated current : 1.0A

**Product no. / Details**

Product no.	Pin layout	Pack of
RPS2-2	4 (2 pin x 2)	1
RPS2-20	40 (20 pin x 2)	1

**RPSP2.5-11****HEXAGONAL STANDOFF****RPSP2.5-11 dimensions**

■ DXF/DWG/PDF drawings available on our website.



- Material / Finish : Brass / Nickel plated
- Brass hexagonal standoff with M2.5 threads on both male and female sides.  
Utilize with RPCB expansion PCB for Raspberry Pi series.

**Product no. / Details**

Product no.	Pack of
RPSP2.5-11	4

**MT2.5-4****MOUNTING SCREW for RPSP2.5-11****MT2.5-4 dimensions**

- Material / Finish : Steel / Trivalent chromate
- Utilize when affixing RPCB expansion PCB.

**Product no. / Details**

Product no.	Pack of
MT2.5-4	4