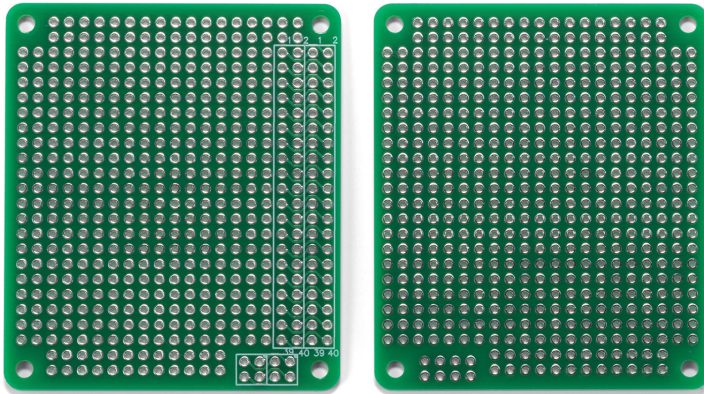
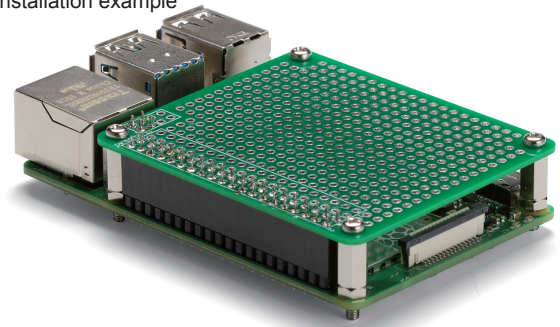


RPCB-4B

EXPANSION PCB for Raspberry Pi 4B



Installation example



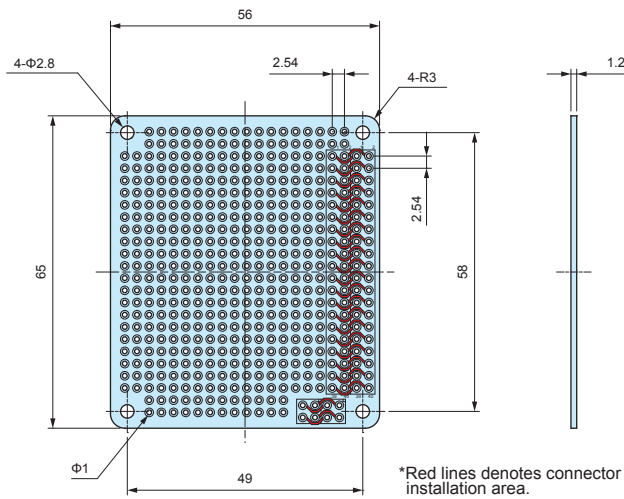
- Raspberry Pi Board is not included.
- Connector, spacer, and mounting screw set are sold separately.

■ Material / Finish : Glass epoxy (FR-4) / Through-hole - Lead-free solder resist

- Expansion PCB for standard Raspberry Pi 4B boards. Use to install expansion parts or components.
- Environmentally friendly lead-free solder. RoHS3 compliant.

RPCB-4B dimensions

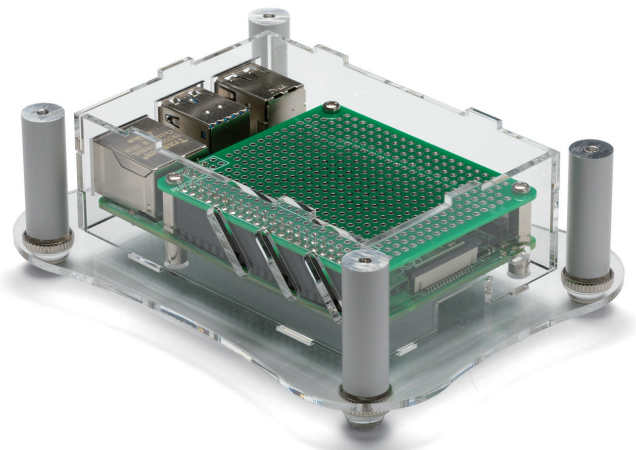
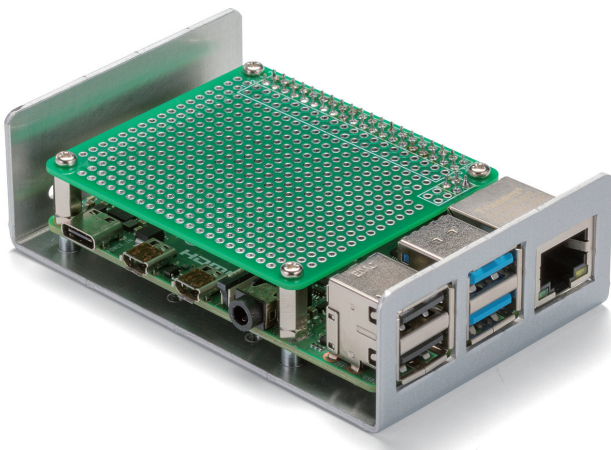
■ DXF/DWG/PDF drawings available on our website.



Product no.

| Product no. | Pack of |
|-------------|---------|
| RPCB-4B | 1 |

- Expansion PCB can also be utilized on RPI-4B and RPA series cases.
See page 132 ~ 134 for RPI series case and page 135 ~ 136 for RPA series case.



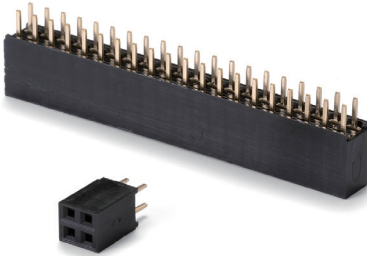
RPS series

PIN SOCKET CONNECTOR for RPCB-4B

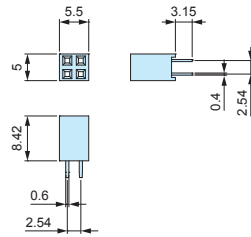


RPS dimensions

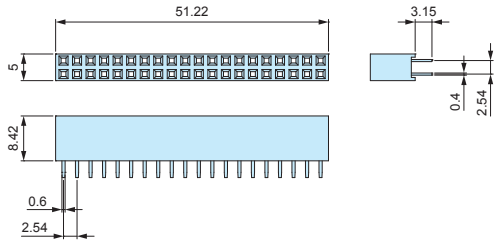
DXF/DWG/PDF drawings available on our website.



RPS2-2



RPS2-20



Material / Color : (Socket) FRPBT UL94V-0 /Black • (Pin) Phosphor bronze

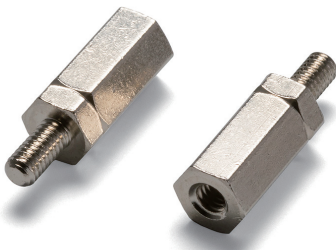
2.54mm hole-to-hole pitch pin socket connector.
Utilize with RPCB-4B expansion PCB for Raspberry Pi 4B.

Product no.

| Product no. | Pin layout | Pack of |
|-------------|-----------------|---------|
| RPS2-2 | 4 (2 pin x 2) | 1 |
| RPS2-20 | 40 (20 pin x 2) | 1 |

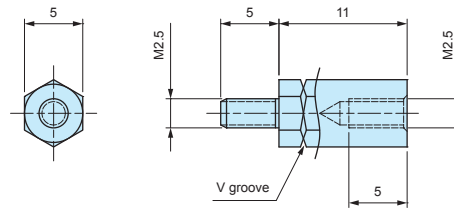
RPSP2.5-11

HEXAGONAL SPACER



RPSP2.5-11 dimensions

DXF/DWG/PDF drawings available on our website.



Material / Finish : Brass / Nickel plated

Brass hexagonal spacer with M2.5 threads on both male and female sides.
Utilize with RPCB-4B expansion PCB for Raspberry Pi 4B.

Product no.

| Product no. | Pack of |
|-------------|---------|
| RPSP2.5-11 | 4 |

MT2.5-4

MOUNTING SCREW for RPSP2.5-11



MT2.5-4 dimensions



Material / Finish : Steel / Trivalent chromate

Utilize when affixing RPCB-4B expansion PCB.

Product no.

| Product no. | Pack of |
|-------------|---------|
| MT2.5-4 | 4 |