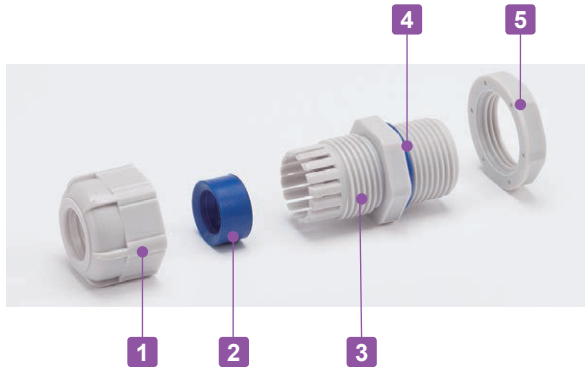




- Weatherproof cable gland equipped with high ultraviolet and degradation resistant silicone sealing insert and O-ring.
- Recommended to use outdoors where waterproofing is critical.

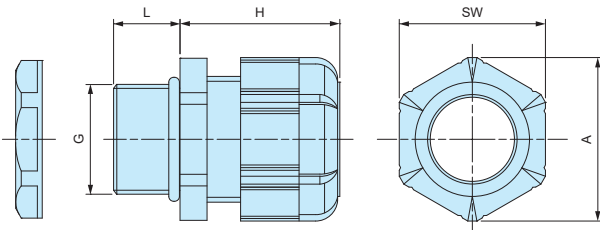


Components

■ PA = Polyamide

| No. | Part name | Material |
|-----|----------------|--------------|
| 1 | Cap | PA66 UL94V-2 |
| 2 | Sealing insert | Silicone |
| 3 | Connector | PA66 UL94V-2 |
| 4 | O-ring | Silicone |
| 5 | Nut | PA66 UL94V-2 |

RMW dimensions



Technical Data

Protection class: IP67
Operating temperature: -20°C ~ +80°C

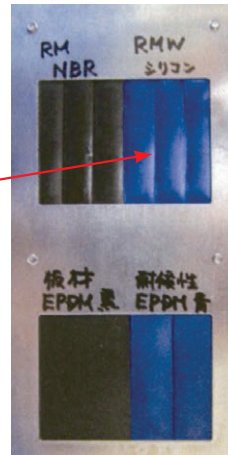
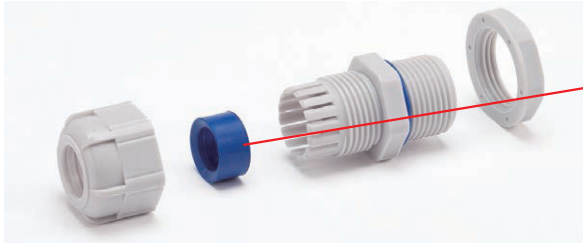
- DXF/DWG/PDF drawings available on our website.
- Lock nut is not included for RMW10S-6.
Please drill a proper thread hole into the enclosure for installation.

Product no. / Dimensions

| Product no. | | G | | Cable range | | L | H Max | SW | A | Pack of |
|--------------|--------------|-------------|---------------|-------------|-----|------|-------|------|------|---------|
| ● Black | ● Light gray | Thread size | Mounting hole | Min | Max | | | | | |
| RMW8L-2.5B | RMW8L-2.5S | M8×1.25 | Φ8.2 | 1 | 2.5 | 13 | 19.5 | 11.8 | 13.5 | 1 |
| RMW8L-4B | RMW8L-4S | M8×1.25 | Φ8.2 | 2.5 | 4 | 13 | 19.5 | 11.8 | 13.5 | 1 |
| RMW10S-6B | RMW10S-6S | M10×1.5 | — | 3 | 6 | 8 | 20.5 | 13 | 14.4 | 1 |
| RMW10L-6B | RMW10L-6S | M10×1.5 | Φ10.2 | 3 | 6 | 13 | 20.5 | 13 | 14.4 | 1 |
| RMW12S-7B | RMW12S-7S | M12×1.5 | Φ12.2 | 3.5 | 7 | 9 | 20.5 | 16 | 17.6 | 1 |
| RMW12L-7B | RMW12L-7S | M12×1.5 | Φ12.2 | 3.5 | 7 | 14.5 | 20.5 | 16 | 17.7 | 1 |
| RMW16S-8B | RMW16S-8S | M16×1.5 | Φ16.2 | 4 | 8 | 9 | 23.5 | 19 | 21 | 1 |
| RMW16L-8B | RMW16L-8S | M16×1.5 | Φ16.2 | 4 | 8 | 15 | 24 | 19 | 21 | 1 |
| RMW20S-12B | RMW20S-12S | M20×1.5 | Φ20.2 | 6 | 12 | 10 | 29 | 24 | 26.2 | 1 |
| RMW20L-12B | RMW20L-12S | M20×1.5 | Φ20.2 | 6 | 12 | 15 | 28.5 | 24 | 26.2 | 1 |
| RMW25L-17B | RMW25L-17S | M25×1.5 | Φ25.2 | 11 | 17 | 15 | 35 | 33 | 36.2 | 1 |
| RMW32L-21B | RMW32L-21S | M32×1.5 | Φ32.3 | 13 | 21 | 15 | 38 | 36 | 39.5 | 1 |
| RMW40L-27B | RMW40L-27S | M40×1.5 | Φ40.3 | 18 | 27 | 18 | 43.5 | 45.7 | 50.5 | 1 |
| RMW50L-38B | RMW50L-38S | M50×1.5 | Φ50.4 | 27 | 38 | 20 | 50.5 | 60 | 66.5 | 1 |
| RMW8L-2.5B-P | RMW8L-2.5S-P | M8×1.25 | Φ 8.2 | 1 | 2.5 | 13 | 19.5 | 11.8 | 13.5 | 100 |
| RMW8L-4B-P | RMW8L-4S-P | M8×1.25 | Φ 8.2 | 2.5 | 4 | 13 | 19.5 | 11.8 | 13.5 | 100 |
| RMW10L-6B-P | RMW10L-6S-P | M10×1.5 | Φ10.2 | 3 | 6 | 13 | 20.5 | 13 | 14.4 | 100 |
| RMW12S-7B-P | RMW12S-7S-P | M12×1.5 | Φ12.2 | 3.5 | 7 | 9 | 20.5 | 16 | 17.6 | 100 |
| RMW12L-7B-P | RMW12L-7S-P | M12×1.5 | Φ12.2 | 3.5 | 7 | 14.5 | 20.5 | 16 | 17.7 | 100 |
| RMW16S-8B-P | RMW16S-8S-P | M16×1.5 | Φ16.2 | 4 | 8 | 9 | 23.5 | 19 | 21 | 100 |
| RMW16L-8B-P | RMW16L-8S-P | M16×1.5 | Φ16.2 | 4 | 8 | 15 | 24 | 19 | 21 | 100 |
| RMW20S-12B-P | RMW20S-12S-P | M20×1.5 | Φ20.2 | 6 | 12 | 10 | 29 | 24 | 26.2 | 100 |
| RMW20L-12B-P | RMW20L-12S-P | M20×1.5 | Φ20.2 | 6 | 12 | 15 | 28.5 | 24 | 26.2 | 100 |
| RMW25L-17B-P | RMW25L-17S-P | M25×1.5 | Φ25.2 | 11 | 17 | 15 | 35 | 33 | 36.2 | 100 |

RMW series silicone sealing insert weatherproof test report

Object: Cut into a piece of the silicone sealing insert from RMW series and attach it onto an aluminium plate.
 For comparison, NBR sealing insert from our RM and EPDM sealing insert from another manufacturer is also attached for comparison purposes.



Before



After

Testing conditions

Equipment : 7.5kW Super Xenon Weather Meter SX75 (Suga Test Instruments Co., Ltd. - <http://www.sugatest.co.jp/english/>)
Conditions : JIS B7754 : 1991

Testing with an authorized Xenon arc lamp weathering test equipment under the conditions denoted below.

Irradiance : 180W/m² at 300-400nm

Black Panel Temperature : 63±3°C Humidity Range : 50±10%

Cycle Conditions : 120 minutes cycle (18 minutes irradiation + water spray - 102 minutes irradiation)

2,000 hours (equivalent to a period of 4 years under natural conditions)

Time period :

Total radiant exposure : 1296MJ/m²

Test result (visual / touch inspection)

Silicone sealing insert material : No cracks, no gloss transition, no powder - no appearance change at all. Flexibility remains unchanged.

Before



After



NBR material from our RM series : Lost glossiness on the surface and material is stiffened.

Before

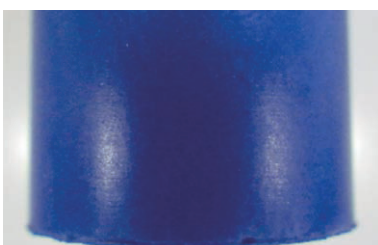


After

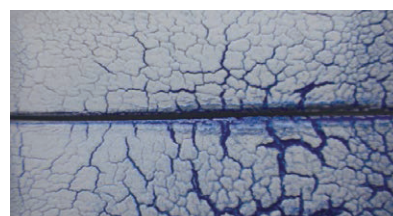


EPDM material from weatherproof cable gland of another manufacturer : Cracked, color drastically faded and powder appeared on the surface.

Before



After

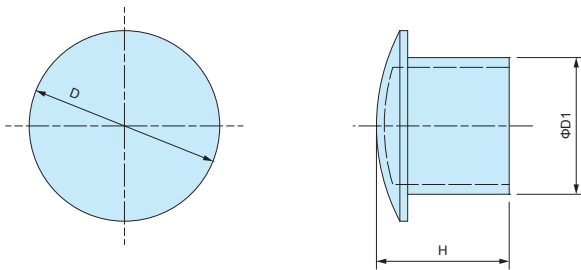


SP SERIES

SEALING PLUG



SP dimensions



■ Material : Nylon

- Sealing plug for cable glands when not in use.
- Maintain a waterproof seal when plugged into the sealing insert on cable glands.

Product no. / Dimensions

| Product no. | D | D1 | H | Suitable cable glands | Pack of |
|-------------|------|------|------|--------------------------------------|---------|
| SP-12 | 10.2 | 6 | 15.5 | RMW12, RM12, RMW16, RM16, RPG7, RPG9 | 10 |
| SP-16 | 15.6 | 9.5 | 15.5 | RMW20, RM20, RPG11, RPG13.5 | 10 |
| SP-20 | 19.6 | 13.5 | 16.5 | RPG16 | 10 |
| SP-25 | 24.4 | 17.5 | 17 | RMW25, RM25, RMW32, RM32, RPG21 | 5 |
| SP-40 | 32.5 | 24.5 | 17.5 | RMW40, RM40, RPG29 | 5 |
| SP-50 | 47.2 | 38.9 | 17.6 | RMW50, RM50 | 5 |