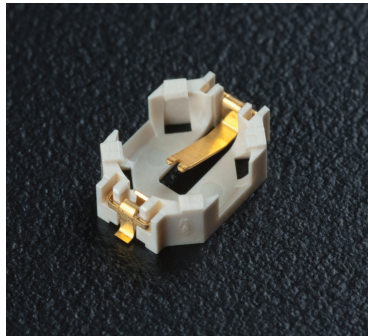


PB621

ML621 • SR621 SMALL BATTERY HOLDER

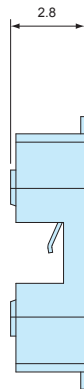
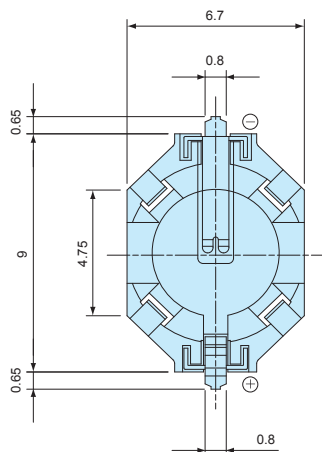


■ DXF/DWG/PDF drawings available on our website.

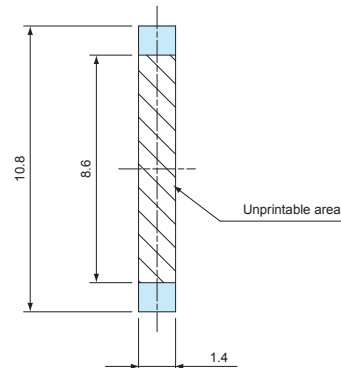
Technical Data

Operating temperature: -25°C ~ +85°C

- Heat resistant glass fiber filled LCP for lead free reflow soldering.



PCB layout top view



Components

Holder material	Holder color	Contact material	Contact finish
Glass fiber filled LCP (UL94V-0)	Ivory	Copper alloy	Gold plated

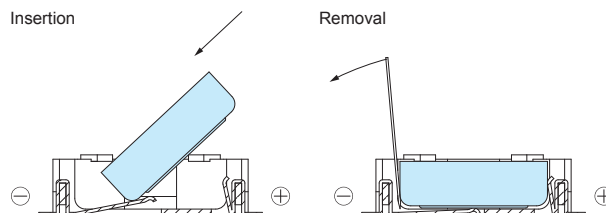
Product no. / Feature

Product no.	Matching battery	Contact type	Weight (g)	Pack of
PB621	ML621 / SR621	Surface mount x 2	0.1	10

NOTE

Be careful not to damage the holder when removing the battery without tools. Recommended to use a fine tipped stick or a flat head screwdriver to remove the battery.

How to replace a coin cell.



PD SERIES

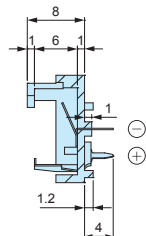
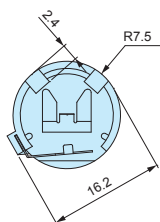
BUTTON BATTERY HOLDER



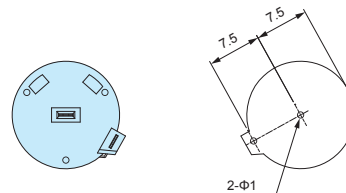
■ DXF/DWG/PDF drawings available on our website.

Technical Data

Operating temperature: -40°C ~ +80°C



Installation hole layout



Components

Holder material	Holder color	Contact material	Contact finish
PBT (UL94V-0)	Black	Phosphor bronze	Sn plated

NOTE

Insert battery fully in until it is completely flat, otherwise there may be a risk of short-circuiting.

Product no. / Feature

Product no.	Matching battery	Contact type	Weight (g)	Pack of
PD23	LR44 / SR44	Through hole pin x 2	0.7	1
PD23-T	LR44 / SR44	Through hole pin x 2	—	100