

# MX • MXA • MXF • MXB SERIES

## ALUMINIUM MOBILE ENCLOSURE

MXF • MXB • MXA • MX mobile enclosures are designed with a beautiful and elegant finish in mind. Having a rounded design, it fits comfortably in your hand, while giving off a simple yet sharp look. Suitable for use as small audio devices and as an amplifier unit, among others in a wide variety of industries. Selectable from 4 different types: an affordable plastic end panel type MX series, a luxurious aluminium end panel type MXA series, a flanged end panel MXF series, and the MXB series, which is the MXA series with a protective silicone band.

## APPLICATION EXAMPLE

### DESKTOP AUDIO PREAMPLIFIER with USB Product by Conisis lab.inc. (Japan)



### DIGITAL HEADPHONE AMPLIFIER

Product by UpTone Audio (USA)



### WIRELESS MICROPHONE SYSTEM

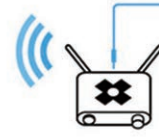
Product by Catchbox (Finland)



reddot award  
product design



*Catchbox  
Microphone*



*Catchbox  
Receiver*



*Sound system  
of your choice*



## ETHERNET CELLULAR ROUTER

Product by NimbeLink (USA)



## WiFi ACCESS POINT



## AIS (AUTOMATIC IDENTIFICATION SYSTEM) SIGNAL RECEIVER

Product by SRT Marine System Solutions (UK)



## DATA TRANSMITTER for AUTOMATIC NUMBER PLATE RECOGNITION (ANPR) SYSTEM

Product by Sensor Dynamics (Australia)



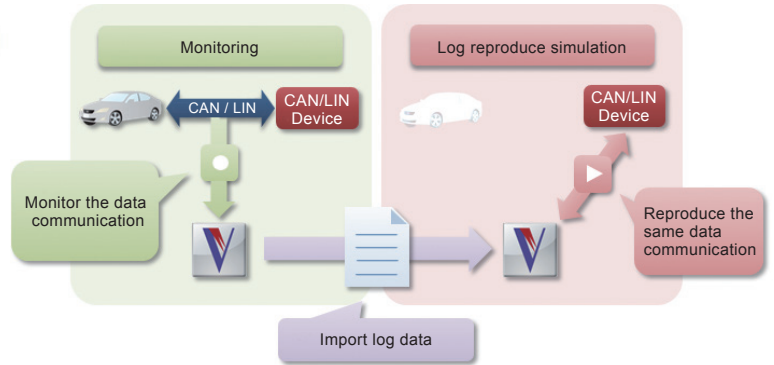
## IO-Link DEVICE

Product by Lemonage Software (Germany)



## CAN & LIN VEHICLE COMMUNICATION SIMULATOR / MONITOR

Product by P&A Technologies (Japan)



## SIGNAL CHECKER / TESTER

Product by KUWATEC (Japan)



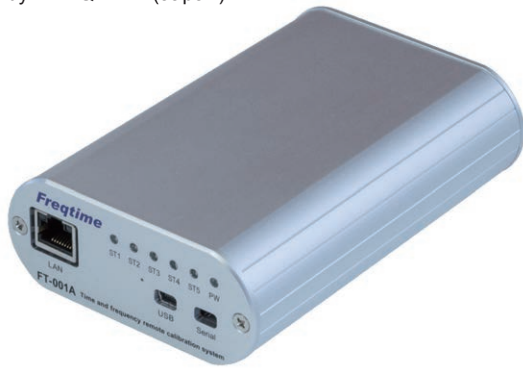
## MODEL RAILROAD CONTROLLER

Product by Calura Ltd (Japan)



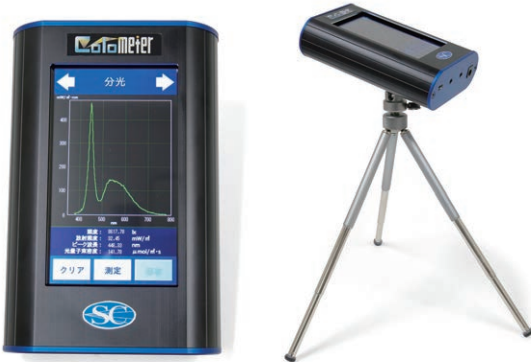
## PORTABLE FREQUENCY STANDARD DEVICE

Product by FREQTIME (Japan)



## SPECTRAL LUMINOMETER

Product by Spectra Co-op (Japan)



## RTD SENSOR TESTER

Product by Turbomation (USA)



## MOBILE MOISTURE METER

Product by ARP (Japan)



## FULL COLOR LED TABLETOP LIGHTING DIVICE

Product by DAISHO DENKI INC. (Japan)



## ACTIVE EMF PROTECTION DEVICE

Product by Blueshield Inc (New Zealand)



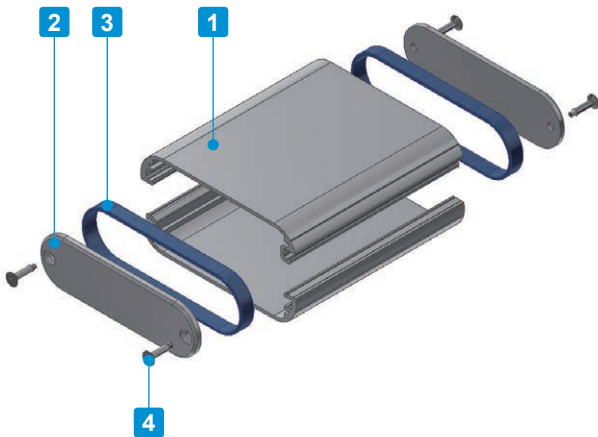
## ILLUMINATION INVERTER

Product by Future Illuminations (USA)



# MXB SERIES

# ALUMINIUM MOBILE ENCLOSURE with SILICONE BAND



- All aluminium mobile enclosure with anti-slip, impact resistant silicone band.
- 16 different color combinations and 30 different sizes available to choose from.
- Suitable to be used as digital audio amplifiers, communication devices, measurement tools, etc.

### Components

No.	Part name	Pcs	Material	Color / Finish
1	Frame	2	Extruded aluminium A6063S-T5	Silver • Black / Anodized
2	Panel	2	Aluminium A1050P	Silver • Black / Anodized
3	Silicone band	2	Silicone	Black • Light gray • Navy • Cyan • Green • Yellow • Orange • Red
4	Self tapping screw	4	Steel	Nickel plated • Black trivalent chromate

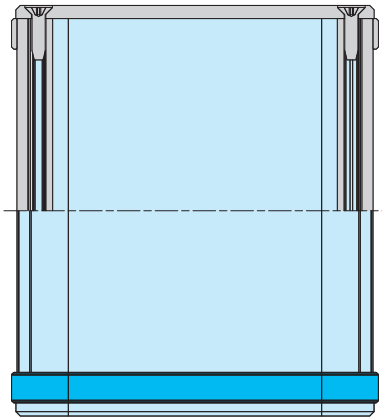
### Color Type



■ Mix and match the MXA series with the SIB series silicone band for a wider variety of color combinations.

MXB dimensions

■ Drawings below are reference examples only.  
DXF/DWG/PDF drawings available on our website.



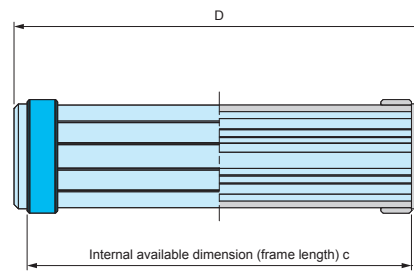
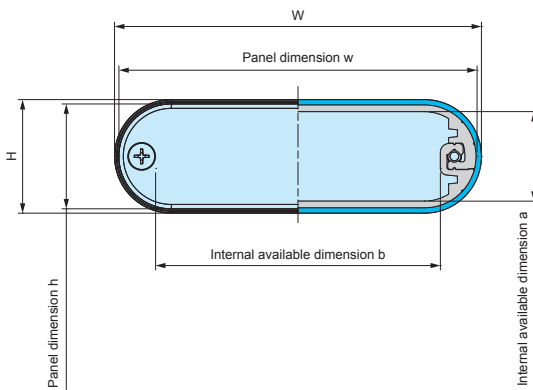
Included screws  
MXB1-5, 2-4, 2-6, 2-10 models : M2.6-14 x 4 pcs  
MXB2-7, 2-8, 3-11, 4-7, 4-10, 4-13 models : M3-10 x 4 pcs

Screw Type

P	H
Plus head	Hexalobular head

Please request / order by indicating the combination part number as below.

**MXB 1 - 5 - 5**     
Color code Screw P or H



Product no. / Dimensions

■ Please suffix color and screw code at the end of the product number.

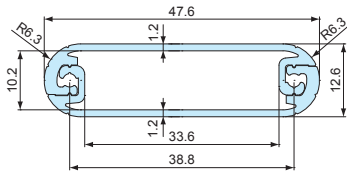
Product no.	H	W	D	h	w	a	b	c	Weight (g)
NEW MXB1- 5- 5 <span style="border: 1px solid red; display: inline-block; width: 10px; height: 10px;"></span> <span style="border: 1px solid blue; display: inline-block; width: 10px; height: 10px;"></span>	15.8	50.4	49	13	48	10.2	33.6	43	26
NEW MXB1- 5- 8 <span style="border: 1px solid red; display: inline-block; width: 10px; height: 10px;"></span> <span style="border: 1px solid blue; display: inline-block; width: 10px; height: 10px;"></span>	15.8	50.4	79	13	48	10.2	33.6	73	41
NEW MXB1- 5-11 <span style="border: 1px solid red; display: inline-block; width: 10px; height: 10px;"></span> <span style="border: 1px solid blue; display: inline-block; width: 10px; height: 10px;"></span>	15.8	50.4	109	13	48	10.2	33.6	103	56
NEW MXB2- 4- 4 <span style="border: 1px solid red; display: inline-block; width: 10px; height: 10px;"></span> <span style="border: 1px solid blue; display: inline-block; width: 10px; height: 10px;"></span>	18	43.6	44	15	41	12.2	26.6	38	26
NEW MXB2- 4- 7 <span style="border: 1px solid red; display: inline-block; width: 10px; height: 10px;"></span> <span style="border: 1px solid blue; display: inline-block; width: 10px; height: 10px;"></span>	18	43.6	74	15	41	12.2	26.6	68	41
NEW MXB2- 4-10 <span style="border: 1px solid red; display: inline-block; width: 10px; height: 10px;"></span> <span style="border: 1px solid blue; display: inline-block; width: 10px; height: 10px;"></span>	18	43.6	104	15	41	12.2	26.6	98	51
NEW MXB2- 6- 5 <span style="border: 1px solid red; display: inline-block; width: 10px; height: 10px;"></span> <span style="border: 1px solid blue; display: inline-block; width: 10px; height: 10px;"></span>	20.3	59.6	46	18	57	15.1	42.5	40	36
NEW MXB2- 6- 7 <span style="border: 1px solid red; display: inline-block; width: 10px; height: 10px;"></span> <span style="border: 1px solid blue; display: inline-block; width: 10px; height: 10px;"></span>	20.3	59.6	71	18	57	15.1	42.5	65	51
NEW MXB2- 6-10 <span style="border: 1px solid red; display: inline-block; width: 10px; height: 10px;"></span> <span style="border: 1px solid blue; display: inline-block; width: 10px; height: 10px;"></span>	20.3	59.6	96	18	57	15.1	42.5	90	66
NEW MXB2- 7- 5 <span style="border: 1px solid red; display: inline-block; width: 10px; height: 10px;"></span> <span style="border: 1px solid blue; display: inline-block; width: 10px; height: 10px;"></span>	23.5	72.5	54	20	70	16.5	53.2	48	57
NEW MXB2- 7- 8 <span style="border: 1px solid red; display: inline-block; width: 10px; height: 10px;"></span> <span style="border: 1px solid blue; display: inline-block; width: 10px; height: 10px;"></span>	23.5	72.5	84	20	70	16.5	53.2	78	82
NEW MXB2- 7-11 <span style="border: 1px solid red; display: inline-block; width: 10px; height: 10px;"></span> <span style="border: 1px solid blue; display: inline-block; width: 10px; height: 10px;"></span>	23.5	72.5	114	20	70	16.5	53.2	108	112
NEW MXB2- 8- 6 <span style="border: 1px solid red; display: inline-block; width: 10px; height: 10px;"></span> <span style="border: 1px solid blue; display: inline-block; width: 10px; height: 10px;"></span>	26.5	84.8	64	24	82	20.5	65.2	58	77
NEW MXB2- 8- 9 <span style="border: 1px solid red; display: inline-block; width: 10px; height: 10px;"></span> <span style="border: 1px solid blue; display: inline-block; width: 10px; height: 10px;"></span>	26.5	84.8	94	24	82	20.5	65.2	88	107
NEW MXB2- 8-12 <span style="border: 1px solid red; display: inline-block; width: 10px; height: 10px;"></span> <span style="border: 1px solid blue; display: inline-block; width: 10px; height: 10px;"></span>	26.5	84.8	124	24	82	20.5	65.2	118	137
NEW MXB2-10- 7 <span style="border: 1px solid red; display: inline-block; width: 10px; height: 10px;"></span> <span style="border: 1px solid blue; display: inline-block; width: 10px; height: 10px;"></span>	20.3	103.6	74	16	100	13.2	85.6	68	75
NEW MXB2-10-10 <span style="border: 1px solid red; display: inline-block; width: 10px; height: 10px;"></span> <span style="border: 1px solid blue; display: inline-block; width: 10px; height: 10px;"></span>	20.3	103.6	104	16	100	13.2	85.6	98	105
NEW MXB2-10-14 <span style="border: 1px solid red; display: inline-block; width: 10px; height: 10px;"></span> <span style="border: 1px solid blue; display: inline-block; width: 10px; height: 10px;"></span>	20.3	103.6	144	16	100	13.2	85.6	138	140
NEW MXB3-11- 7 <span style="border: 1px solid red; display: inline-block; width: 10px; height: 10px;"></span> <span style="border: 1px solid blue; display: inline-block; width: 10px; height: 10px;"></span>	33.5	113.9	72	30	110	26.5	93.2	66	120
NEW MXB3-11-11 <span style="border: 1px solid red; display: inline-block; width: 10px; height: 10px;"></span> <span style="border: 1px solid blue; display: inline-block; width: 10px; height: 10px;"></span>	33.5	113.9	112	30	110	26.5	93.2	106	170
NEW MXB3-11-16 <span style="border: 1px solid red; display: inline-block; width: 10px; height: 10px;"></span> <span style="border: 1px solid blue; display: inline-block; width: 10px; height: 10px;"></span>	33.5	113.9	162	30	110	26.5	93.2	156	240
NEW MXB4- 7- 5 <span style="border: 1px solid red; display: inline-block; width: 10px; height: 10px;"></span> <span style="border: 1px solid blue; display: inline-block; width: 10px; height: 10px;"></span>	38.2	72	52	35	70	31.4	53.2	46	72
NEW MXB4- 7- 8 <span style="border: 1px solid red; display: inline-block; width: 10px; height: 10px;"></span> <span style="border: 1px solid blue; display: inline-block; width: 10px; height: 10px;"></span>	38.2	72	82	35	70	31.4	53.2	76	102
NEW MXB4- 7-11 <span style="border: 1px solid red; display: inline-block; width: 10px; height: 10px;"></span> <span style="border: 1px solid blue; display: inline-block; width: 10px; height: 10px;"></span>	38.2	72	112	35	70	31.4	53.2	106	137
NEW MXB4-10- 7 <span style="border: 1px solid red; display: inline-block; width: 10px; height: 10px;"></span> <span style="border: 1px solid blue; display: inline-block; width: 10px; height: 10px;"></span>	44.7	97.9	70	40	95	36.4	78.2	64	125
NEW MXB4-10-11 <span style="border: 1px solid red; display: inline-block; width: 10px; height: 10px;"></span> <span style="border: 1px solid blue; display: inline-block; width: 10px; height: 10px;"></span>	44.7	97.9	110	40	95	36.4	78.2	104	180
NEW MXB4-10-14 <span style="border: 1px solid red; display: inline-block; width: 10px; height: 10px;"></span> <span style="border: 1px solid blue; display: inline-block; width: 10px; height: 10px;"></span>	44.7	97.9	140	40	95	36.4	78.2	134	225
NEW MXB4-13- 9 <span style="border: 1px solid red; display: inline-block; width: 10px; height: 10px;"></span> <span style="border: 1px solid blue; display: inline-block; width: 10px; height: 10px;"></span>	38.5	134	90	35	130	31	113.2	84	187
NEW MXB4-13-14 <span style="border: 1px solid red; display: inline-block; width: 10px; height: 10px;"></span> <span style="border: 1px solid blue; display: inline-block; width: 10px; height: 10px;"></span>	38.5	134	140	35	130	31	113.2	134	272
NEW MXB4-13-20 <span style="border: 1px solid red; display: inline-block; width: 10px; height: 10px;"></span> <span style="border: 1px solid blue; display: inline-block; width: 10px; height: 10px;"></span>	38.5	134	200	35	130	31	113.2	194	377

■ H and W may experience slight variance from listed dimensions due to silicone band construct.

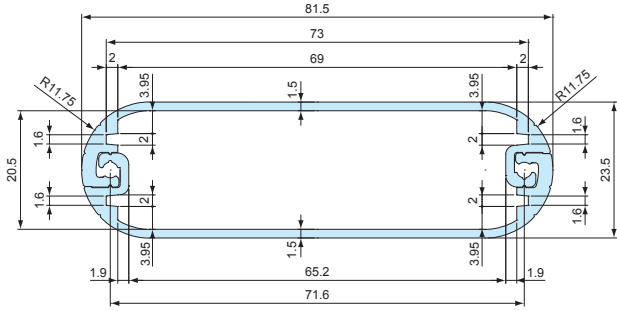
**MXF · MXB · MXA · MX frame**

■ DXF/DWG/PDF drawings available on our website.

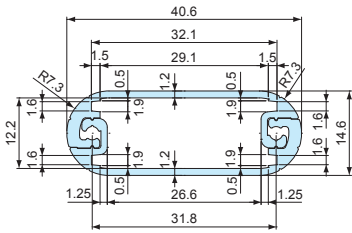
MXF/MXB/MXA/MX1-5-□



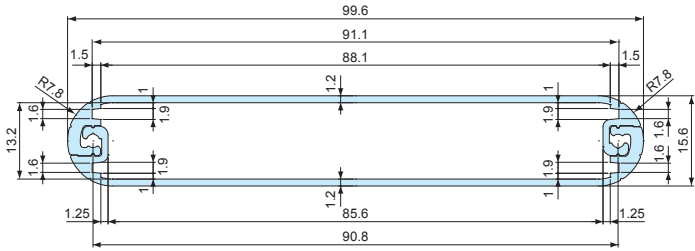
MXF/MXB/MXA/MX2-8-□



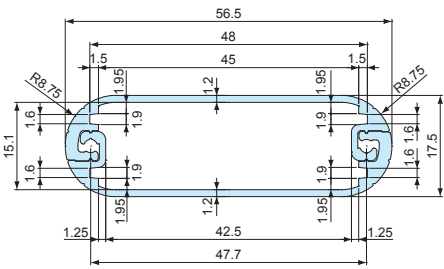
MXF/MXB/MXA/MX2-4-□



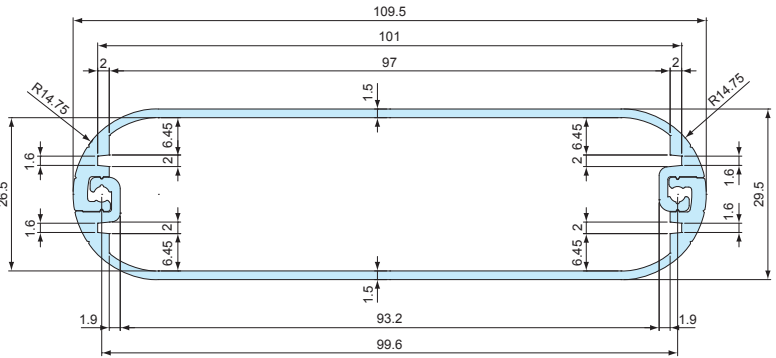
MXF/MXB/MXA/MX2-10-□



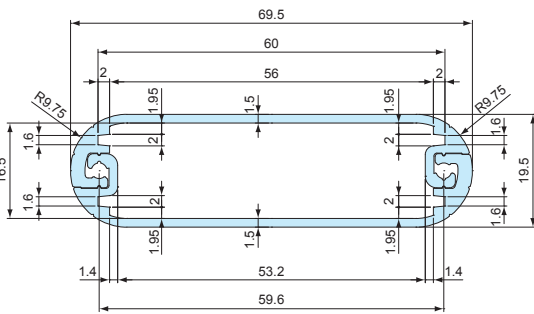
MXF/MXB/MXA/MX2-6-□



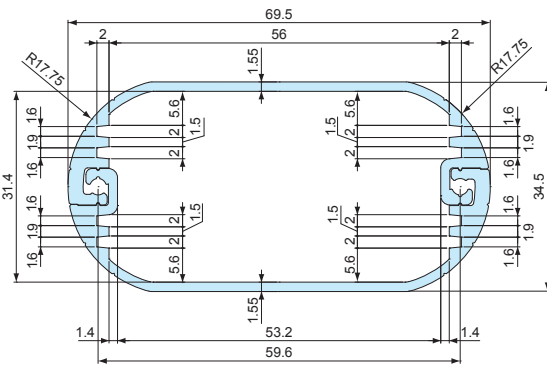
MXF/MXB/MXA/MX3-11-□



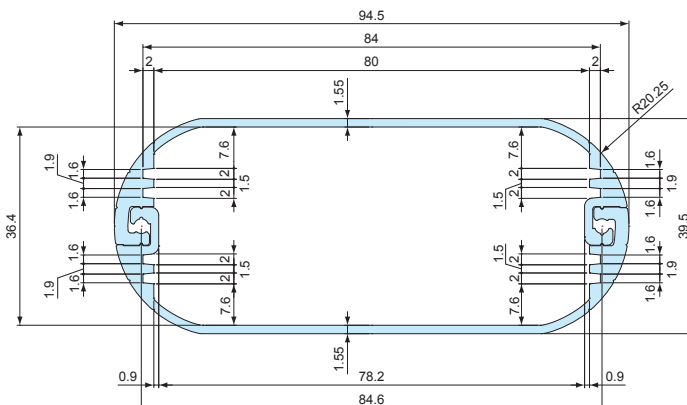
MXF/MXB/MXA/MX2-7-□



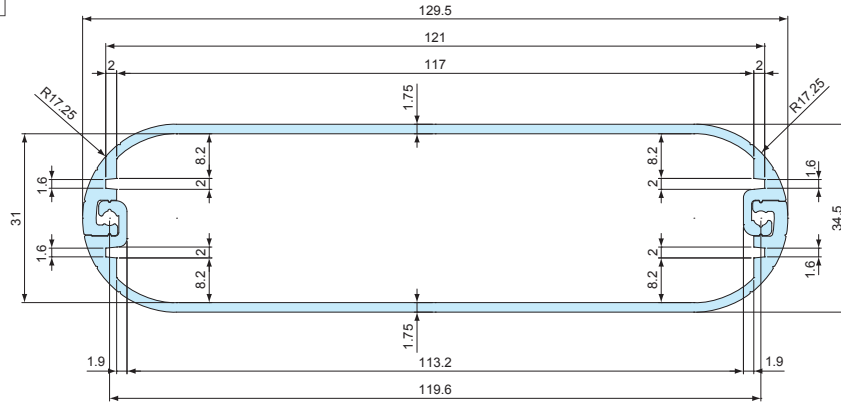
MXF/MXB/MXA/MX4-7-□



MXF/MXB/MXA/MX4-10-□



MXF/MXB/MXA/MX4-13-□



Accessories (Optional parts)

**SIB SERIES** **SILICONE BAND** ★★ NEW

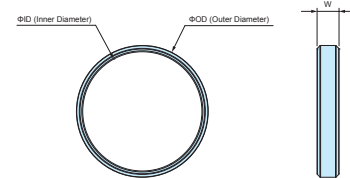


Application example



- Silicone band designed to fit MXA & MX series.
- Silicone band provides both shock resistance and non-slip grips for the MXA & MX enclosure.
- Elastic silicone band may also fit other similarly sized enclosures.

SIB dimensions



Color Type

Code	R Red	O Orange	Y Yellow	G Green	C Cyan	N Navy	L Light gray	B Black
Color								

Components

Part name	Pcs	Material	Color
Silicone band	Pair (2 pcs)	Silicone	Red • Orange • Yellow • Green • Cyan • Navy • Light gray • Black

Product no. / Dimensions

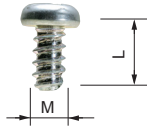
■ Please suffix color code at the end of the product number.

Product no.	W	ID	OD	Suitable enclosures	Enclosure circumference (mm)	Weight (g)
<b>NEW</b> SIB-21□	6	21	25	MXA/MX1-5-□ • 2-4-□ • 2-6-□	95~135	2
<b>NEW</b> SIB-38□	7	38	42	MXA/MX2-7-□ • 2-8-□ • 4-7-□	160~190	4
<b>NEW</b> SIB-58□	8	58	63	MXA/MX2-10-□ • 3-11-□ • 4-10-□	215~255	10
<b>NEW</b> SIB-72□	10	72	77	MXA/MX4-13-□	280~320	14



EM SERIES

PCB MOUNTING SCREW



- Self-tapping screws for mounting PCB on bosses or standoffs.
- EM-3-6 self-tapping screws are suitable for mounting 1.6mm or thicker PCB.

Product no. / Dimensions

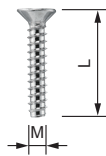
Product no.	M	L	Material	Finish	Suitable enclosures	Pack of
EM-1.6	1.6	4	Steel	Trivalent chromate	WC • CSS • CS • PS (M1.6 size)	50
EM-2	2	5	Steel	Trivalent chromate	PS • TW • TWN • TWF • WP (M2 size)	50
EM-2.3	2.3	6	Steel	Trivalent chromate	WH • LC • LCT • LCS • LCE • PFE WSC (Top cover bosses) PF • PFF (M2.3 size) TW • TWN • TWF (M2.3 size) WP (M2.3 size)	50
<b>NEW</b> EM-2.3-8	2.3	8	Steel	Trivalent chromate	WSC (Bottom base bosses)	50
EM-2.6	2.6	6	Steel	Trivalent chromate	PF • PFF • WP (M2.6 size)	50
EM-3	3	5	Steel	Trivalent chromate	SU TWS • TW • TWN • TWF (M3 sizes)	50
EM-3-6	3	6	Steel	Trivalent chromate		50

MR SERIES

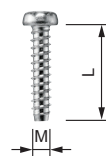
TORX SCREW



Countersunk head



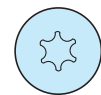
Pan head



With pin



★ Without pin



★ : MR1.6-6S, MR-2S, MR2.6-10□, and MR3-14□ are without pin.

Product no. / Dimensions

★Mark = Without pin

Product no.	M	L	head no.	Head style	Material	Finish	Suitable enclosures	Pack of
MR1.6-6S★	1.6	6	T3	Pan	Steel	Nickel plated	CS • CSS	20
MR2.5-8PS	2.5	8	T8	Pan	Steel	Nickel plated	PF • PFE • PFF (M2.5 size)	20
MR2.6-10S★	2.6	10	T8	Countersunk	Steel	Nickel plated	TW • TWN (M2.6 models) TWF (M2.6 models)	20
MR2.6-10B★	2.6	10	T8	Countersunk	Steel	Black trivalent chromate	MX • MXA • MXB • MXF (M2.6 models)	20
MR2.6-12PS	2.6	12	T8	Pan	Steel	Nickel plated	LCT • LCS • LC115-F2 / F3 LCT • LCS • LC145S-F6	20
MR2.6-14PS	2.6	14	T8	Pan	Steel	Nickel plated	LCT • LCS • LC115H-F2 / F3 / M2 / 9V LCT • LCS • LC135-F4 / M2 / M3 / 9V LCT • LCS • LC135H-F4 / M2 / M3 / 9V LCT • LCS • LC145-F6 / M2 / M4 LCT • LCS • LC145H-F6 / M2 / M4 LCT • LCS • LC165-M4 LCT • LCS • LC165H-M4	20
MR2.6-14S	2.6	14	T8	Countersunk	Steel	Nickel plated	LCT • LCS • LC115-N / F2 / F3 LCT • LCS • LC145S-F6 / 145S-N LCE115-N TW • TWN7-2-11 / 7-4-11 / 7-5-11 TWF7-2-11 / 7-4-11 / 7-5-11 / 8-2-8 / 8-4-8	20
MR2.6-18S	2.6	18	T8	Countersunk	Steel	Nickel plated	LCT • LCS • LC115H-N / F2 / F3 / M2 / 9V LCT • LCS • LC135-N / F4 / M2 / M3 / 9V LCT • LCS • LC135H-N / F4 / M2 / M3 / 9V LCT • LCS • LC145-N / F6 / M2 / M4 LCT • LCS • LC145H-N / F6 / M2 / M4 LCT • LCS • LC165-N / M4 LCT • LCS • LC165H-N / M4 LCE115H-N • LCE135-N • LCE145H-N • LCE165H-N	20
MR3-8PS	3	8	T10	Pan	Steel	Nickel plated	PF • PFE • PFF (M3 size)	20
MR3-14S★	3	14	T10	Countersunk	Steel	Nickel plated	TW • TWN (M3 models)	20
MR3-14B★	3	14	T10	Countersunk	Steel	Black trivalent chromate	TWF (M3 models) MX • MXA • MXB • MXF (M3 models)	20
MR-1S	3	5	T10	Countersunk	Steel	Nickel plated	UC	20
MR-1B	3	5	T10	Countersunk	Steel	Black trivalent chromate	UC • UCY • US	20
MR-2S	3	10	T10	Countersunk	Steel	Nickel plated	HEN	20

## AFS•AFM SERIES

## ALUMINIUM ISOLATION FEET



- The surface treatment and finish allows the feet to exhibit a polished and luxurious feel.
- Non-slip NBR O-ring is present on the underside of the feet.
- Suitable for use in audio devices.

### Available in both internal and external screw installation type.

#### External type / Shot blast finish (AFS series)



The external type is secured via screws from the underside / base of the feet to the enclosure. A thread hole is required for direct securing, while a circular hole is required for lock nut securing.

The shot blast finish provides a high quality surface finish look, and pairing well with various types of enclosure surfaces.

Available in both silver and black.

#### Internal type / Reflective finish (AFM series)



The internal type is secured via screws from the inside of the enclosure. A circular hole is required for securing into the pre-made threads in the top-side of the feet.

The reflective surface finish adds a high quality touch to the unit, allow it to have a luxurious look.

Available only in Silver.

Accessories (Optional parts)

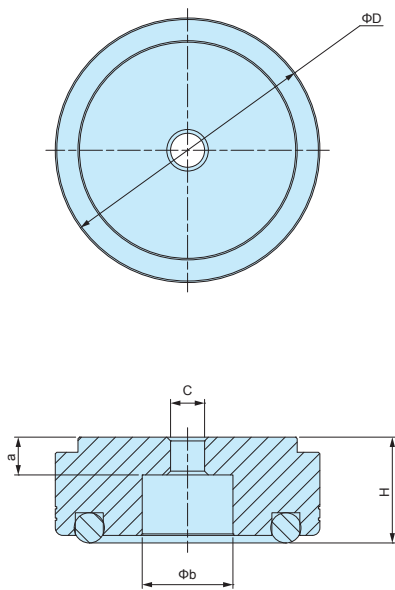
Product no. / Dimensions

Product no.		D	H	Installation type	C	a	b	Pack of
● Silver	● Black							
AFS20- 8S	AFS20- 8B	20	8	Internal	Φ3.4	3	9	4
AFS25-10S	AFS25-10B	25	10	Internal	Φ4.5	4	12	4
AFS30-12S	AFS30-12B	30	12	Internal	Φ4.5	5	12	4
AFS35-14S	AFS35-14B	35	14	Internal	Φ4.5	5	12	4
AFS39-16S	AFS39-16B	39	16	Internal	Φ4.5	5	15	4
AFS44-18S	AFS44-18B	44	18	Internal	Φ4.5	5	20	4
AFS55-20S	AFS55-20B	55	20	Internal	Φ5.5	5	20	4
AFM15- 7S	-	15	7	External	M3	4	-	4
AFM20- 9S	-	20	9	External	M3	5	-	4
AFM25-12S	-	25	12	External	M4	7	-	4
AFM30-14S	-	30	14	External	M4	8	-	4
AFM35-16S	-	35	16	External	M4	10	-	4
AFM39-18S	-	39	18	External	M4	10	-	4
AFM44-20S	-	44	20	External	M4	10	-	4
AFM55-22S	-	55	22	External	M5	15	-	4

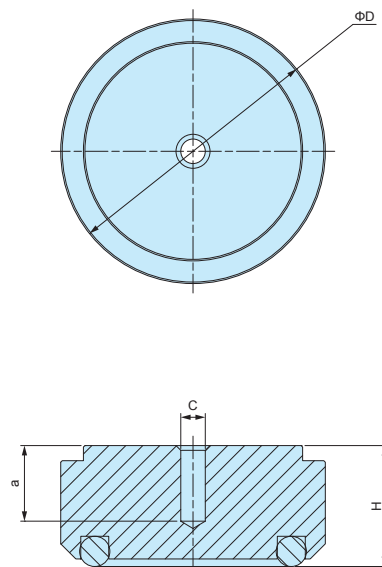
AFS • AFM dimensions

■ Drawings below are reference examples only.  
DXF/DWG/PDF drawings available on our website.

AFS SERIES



AFM SERIES



APPLICATION EXAMPLE

