

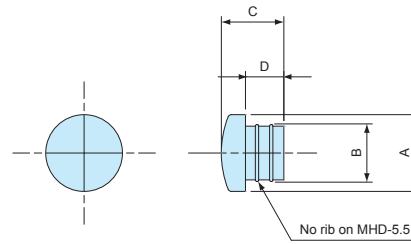
**MHD SERIES**

**SMALL HOLE PLUG**



■ DXF/DWG/PDF drawings available on our website.

- Small hole plug for Φ5.0, Φ5.5, Φ7.0, and Φ8.0 sized holes.
- Made from TPE (Elastomer) and silicone material.
- Applicable panel installation thickness between 1.0mm ~ 3.0mm.



**Product no. / Dimensions**

Product no.	Material	Color	Mounting hole	A	B	C	D	Pack of
MHD-5	TPE	Black	Φ5	7	5.2	5.7	3.5	10
MHD-5.5	Silicone	Black	Φ5.5	7	5.6	5	3	10
MHD-7	TPE	Black	Φ7	9	7.2	5.7	3.5	10
MHD-8	TPE	Black	Φ8	10	8.2	5.7	3.5	10

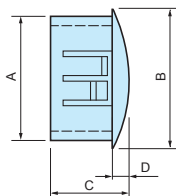
**HPL SERIES**

**HOLE PLUG**



- Hole plug for the unused holes.

■ DXF/DWG/PDF drawings available on our website.



**Product no. / Dimensions**

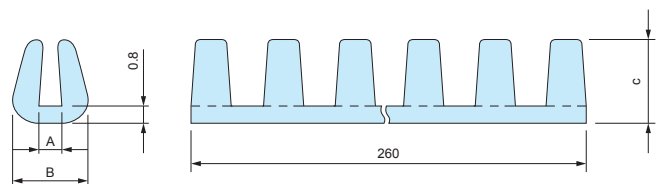
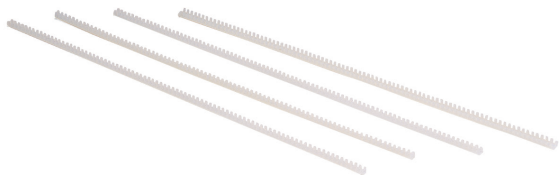
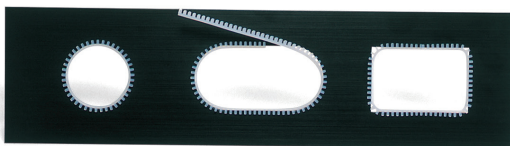
■ Material / Color : PA66 UL94V-2 / Black

Product no.	A	B	C	D	Mounting hole	Panel thickness	Pack of
HPL- 8	7.6	10.4	8.1	1.6	Φ8	1.5/1.6	10
HPL-10	9.5	13	10.5	1.6	Φ9.5	1.0/2.0/2.5	10
HPL-13	12.5	16.7	10.9	1.6	Φ12.5	1.0/1.5/2.0/3.0	10
HPL-16	15.8	19.8	10	1.1	Φ16	1.0/1.2/3.0	10
HPL-19	18.9	23.2	10	1.4	Φ19	1.0/1.2	10
HPL-22	22	26	11.3	1.6	Φ22	1.0/1.2/2.0	10
HPL-25	25.4	29.1	12.3	2.4	Φ25.5	1.0/1.2/2.0	10
HPL-30	30	35	12	1.6	Φ30	1.0/1.2/2.0	10

■ Confirm first for usability on panel thickness not listed in the above chart.

**JKG SERIES**

**HOLE EDGE PROTECTOR**



- Install protector on the cut edge of the hole on the panel to protect cables and components from damage.
- Cut into suitable lengths to fit the hole.

**Product no. / Dimensions**

■ Material / Color : PA66 UL94V-2 / Natural

Product no.	A	B	C	Panel thickness	Pack of
JKG006N	0.6	3.1	3.8	0.5 ~ 0.7	10
JKG008N	0.8	3.1	3.8	0.7 ~ 0.9	10
JKG010N	1	3.3	3.8	0.9 ~ 1.1	10
JKG012N	1.2	3.5	3.8	1.1 ~ 1.3	10
JKG014N	1.4	3.7	3.8	1.3 ~ 1.5	10
JKG016N	1.6	3.9	3.8	1.4 ~ 1.7	10
JKG020N	2	4.3	3.8	1.8 ~ 2.0	10
JKG030N	3	6.2	4.8	2.5 ~ 3.0	10