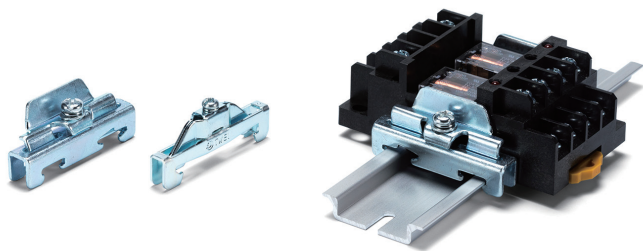
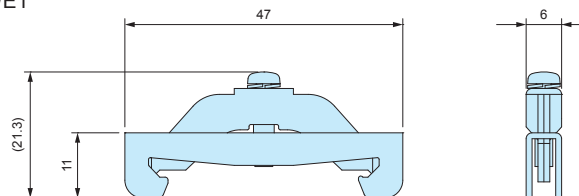


TKR series**DIN-RAIL TERMINAL BLOCK END STOPPER**

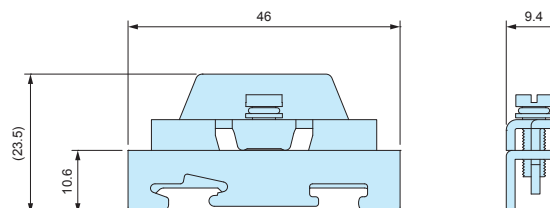
■ DXF/DWG/PDF drawings available on our website.



TKR-TWE1



TKR35-1



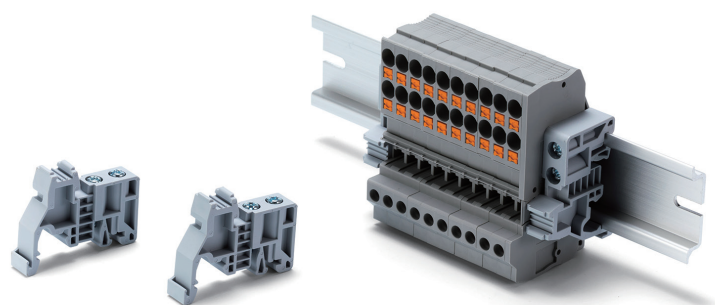
- Stopper bracket for use with 35mm DIN-rail to keep an attachment at a fixed location.
- TKR-TWE1 is used with small DIN rail attachment parts.
For larger / higher attachment parts, TKR35-1 is recommended for providing additional support.

Product no. / Details

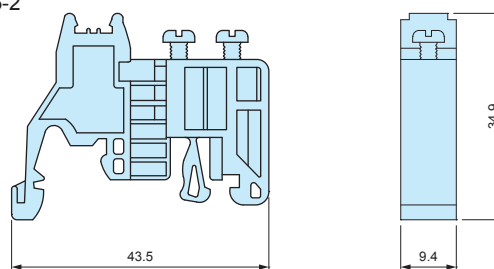
	Product no.	Material	Finish	Pack of
	TKR-TWE1	Steel	Trivalent chromate	2
NEW	TKR35-1	Steel	Trivalent chromate	2
NEW	TKR35-1-P	Steel	Trivalent chromate	50

DRS series**ECONOMICAL DIN-RAIL END STOPPER**

■ DXF/DWG/PDF drawings available on our website.



DRS35-2



- Economically priced end stopper bracket.
- Included screws allow affixing of stopper brackets firmly at a fixed location.

Product no. / Details

	Product no.	Material	Color	Pack of
	DRS35-2	PA66	Light Gray	2
	DRS35-2-P	PA66	Light Gray	50