

Pressure Equalization / Ventilation

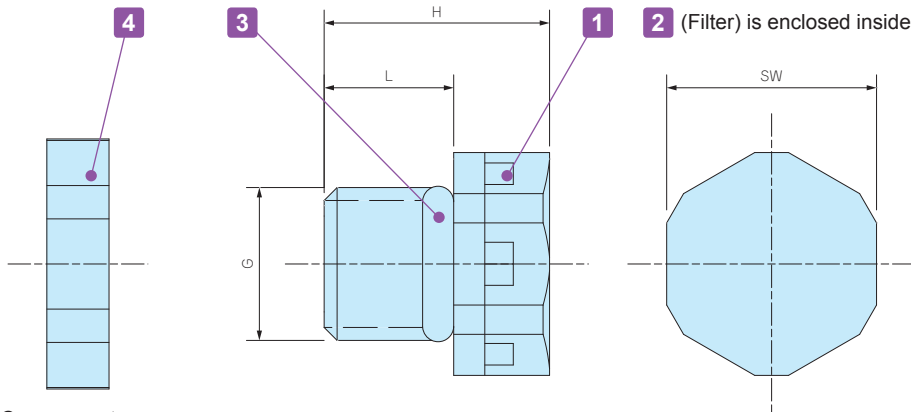
IP68



- IP68 protection class rated (water depth 2 meters / 60 mins) yet highly affordable economical ventilation plug.
- Ventilation plug protects the enclosure from deformation by equalizing internal and external pressure differences, as well as venting the gas generated within the enclosure.
- 50 pcs value pack is available for CVP-6, 12 and 16 models.
- Recommended to be installed at the sides of the enclosure.

CVP dimensions

■ DXF/DWG/PDF drawings available on our website.



Components

■ PA = Polyamide

No.	Part name	Material
1	Housing	PA66 (UL94V-2)
2	Filter	PTFE
3	O-ring	Silicone
4	Lock nut	PA66 (UL94V-2)

Technical Data

Product no.	CVP-6W/B	CVP-12W/B	CVP-16W/B	CVP-24W/B
Airflow	600ml / min (dp = 7kPa)	2200ml / min (dp = 7kPa)	4600ml / min (dp = 7kPa)	7000ml / min (dp = 7kPa)
Certification	IP68 (1hours / 2m-depth)			
Operating temperature	-40°C ~ +100°C			

■ Airflow value listed is for reference only; check under actual usage conditions.

Product no. / Details

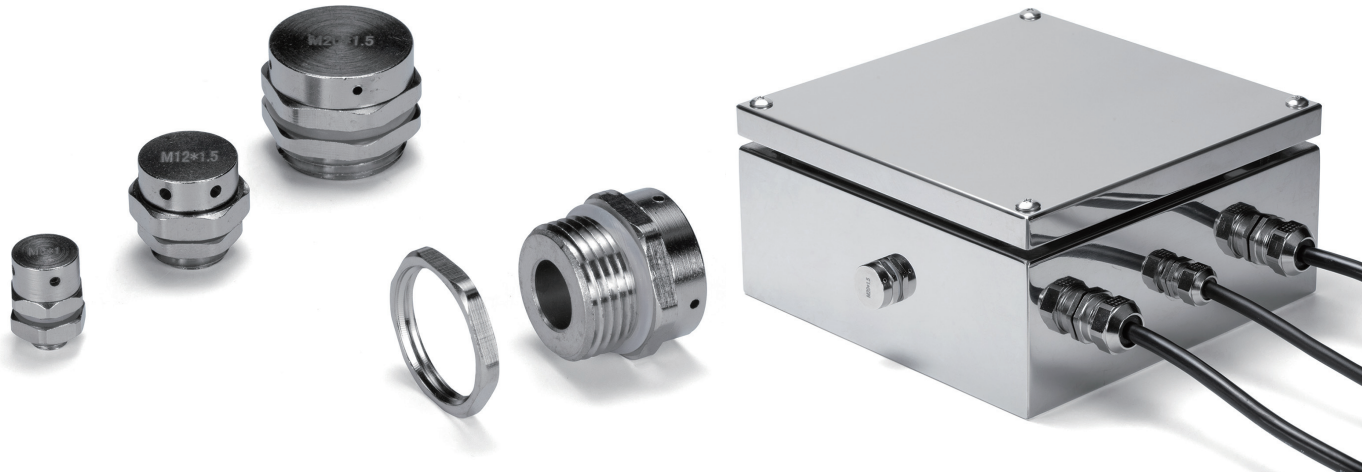
Product no.		G		SW	H	L	Pack of	Weight (g)
● Off-white	● Black	Thread size	Mount hole					
CVP- 6W	CVP- 6B	M 6 × P0.75	Φ 6.2	10.1	12.7	8.2	1	0.8
CVP-12W	CVP-12B	M12 × P1.5	Φ12.2	16.2	17.4	10	1	2.7
CVP-16W	CVP-16B	M16 × P1.5	Φ16.2	22	17	10.1	1	4.2
CVP-24W	CVP-24B	M24 × P1.5	Φ24.2	36	23.6	15	1	10.7
CVP- 6W-P	CVP- 6B-P	M 6 × P0.75	Φ 6.2	10.1	12.7	8.2	50	-
CVP-12W-P	CVP-12B-P	M12 × P1.5	Φ12.2	16.2	17.4	10	50	-
CVP-16W-P	CVP-16B-P	M16 × P1.5	Φ16.2	22	17	10.1	50	-

CVP-M series

METAL VENTILATION PLUG

Pressure Equalization / Ventilation

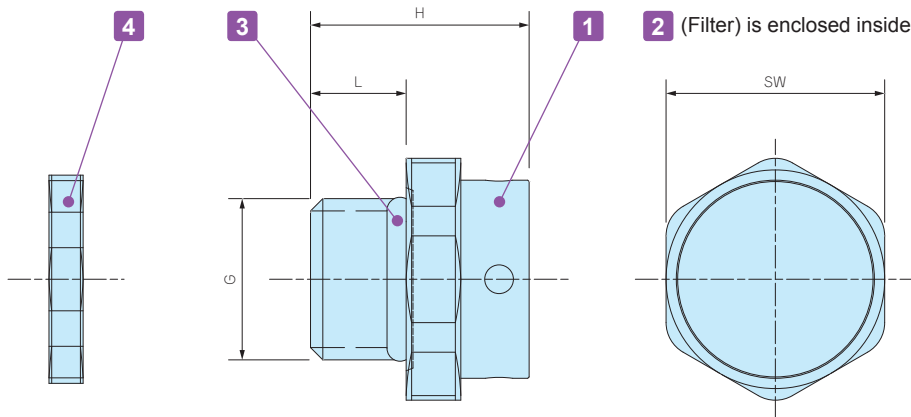
IP68



- High durability yet highly affordable economical metal ventilation plug.
- IP68 protection class rated (water depth 2 meters / 60 mins)
- Ventilation plug protects the enclosure from deformation by equalizing internal and external pressure differences, as well as venting the gas generated within the enclosure.
- Recommended to be installed at the sides of the enclosure.

CVP-M dimensions

■ DXF/DWG/PDF drawings available on our website.



Components

■ PA = Polyamide

No.	Part name	Material
1	Housing	Brass / Nickel plated
2	Filter	PTFE
3	O-ring	Silicone
4	Lock nut	Brass / Nickel plated

Technical Data

Product no.	CVP-6M	CVP-12M	CVP-20M
Airflow	800ml / min (dp = 7kPa)	2000ml / min (dp = 7kPa)	5000ml / min (dp = 7kPa)
Certification	IP68 (1hours / 2m-depth)		
Operating temperature	-40°C ~ +120°C		

■ Airflow value listed is for reference only; check under actual usage conditions.

Product no. / Details

Product no.	G		SW	H	L	Weight (g)
	Thread size	Mount hole				
● Silver CVP- 6M	M 6 × P1	Φ 6.2	10	15	7	6.2
CVP-12M	M12 × P1.5	Φ12.2	16	16	7	14
CVP-20M	M20 × P1.5	Φ20.2	21.8	18.9	10	40.2