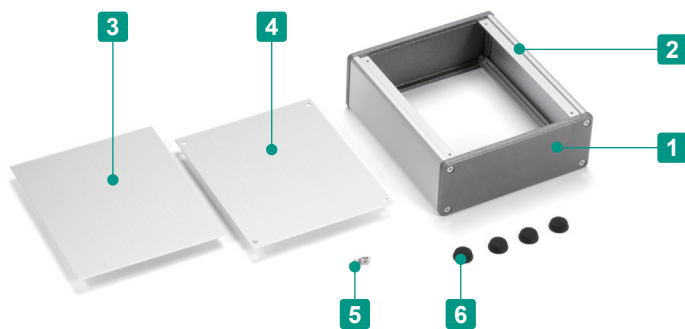


CH SERIES

ALUMINIUM CONTROL BOX



- Simple and strong construction with diecast and extruded aluminium material.
- Durable powder-coated side plate.
- Both the slide and screwed panel can be utilized as the front panel.
- 2 color types available.

Components

No.	Part name	Pcs	Material	Color / Finish
1	Side plate	2	Diecast aluminium ADC12	Black • Metallic gray / Powder coated
2	Frame	2	Extruded aluminium A6063S-T5	Black / Anodized • Silver / Hairline brushed & Anodized
3	Slide panel	1	Aluminium A1100P • A1050P	Black / Painted • Silver / Hairline brushed & Anodized
4	Screwed panel	1	Aluminium A1100P • A1050P	Black / Painted • Silver / Hairline brushed & Anodized
5	Screw	1 set	Steel	Black trivalent chromate • Nickel plated
6	Rubber feet	4	Synthetic rubber	Black

■ Note: panels are covered with a protective film on one side. Remove before assembly.

※CH7 models come with copper plated screws for grounding.

APPLICATION EXAMPLE

WAVEFORM ANALYZER



Product by Graviton Inc. (Japan)

CNC MACHINING CENTER CONTROL UNIT

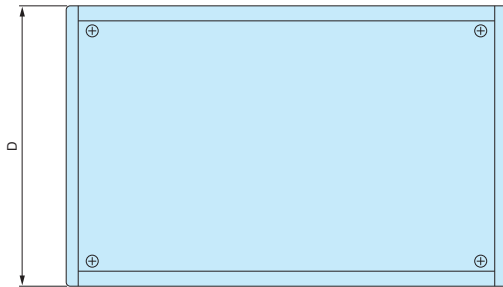
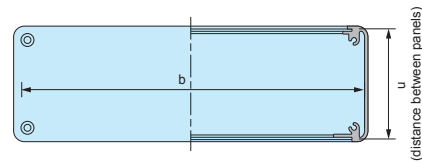
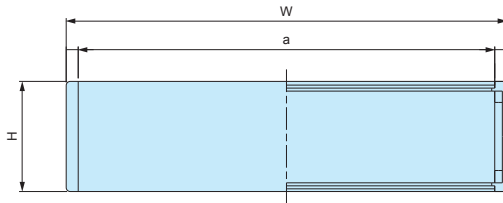


Product by FNS Co. Ltd. (Japan)



CH dimensions

■ Drawings below are reference examples only.
DXF/DWG/PDF drawings available on our website.



Included screws

CH4 • CH6 models

- M3-5 Slotted raised countersunk • Black trivalent chromate x 4 pcs
- M3-5 Slotted raised countersunk • Nickel plated x 4 pcs
- M3-10 countersunk • Black trivalent chromate x 8 pcs
- M3-10 countersunk • Nickel plated x 8 pcs

CH7 • CH8 models

- M3-5 Slotted raised countersunk • Black trivalent chromate x 4 pcs
- M3-5 Slotted raised countersunk • Nickel plated x 4 pcs
- M4-12 countersunk • Black trivalent chromate x 8 pcs
- M4-12 countersunk • Nickel plated x 8 pcs

Product no. / Dimensions

Product no.		W	H	D	a	b	u	Weight (kg)
● Black (BBP)	● Gray-Silver(GSP)							
CH4- 7-10BBP	CH4- 7-10GSP	70	36.5	100.5	60	96.4	30.5	0.15
CH4-10-10BBP	CH4-10-10GSP	100	36.5	100.5	90	96.4	30.5	0.20
CH4-15-10BBP	CH4-15-10GSP	150	36.5	100.5	140	96.4	30.5	0.27
CH4-20-10BBP	CH4-20-10GSP	200	36.5	100.5	190	96.4	30.5	0.35
CH4-25-10BBP	CH4-25-10GSP	250	36.5	100.5	240	96.4	30.5	0.42
CH6- 8-14BBP	CH6- 8-14GSP	80	55	140.7	68	135.7	48.8	0.25
CH6-11-14BBP	CH6-11-14GSP	110	55	140.7	98	135.7	48.8	0.31
CH6-16-14BBP	CH6-16-14GSP	160	55	140.7	148	135.7	48.8	0.41
CH6-22-14BBP	CH6-22-14GSP	220	55	140.7	208	135.7	48.8	0.53
CH6-29-14BBP	CH6-29-14GSP	290	55	140.7	278	135.7	48.8	0.67

Product no.		W	H	D	a	b	u	Weight (kg)
● Black (BBP)	● Gray-Silver(GSP)							
CH7- 9-17BBP	CH7- 9-17GSP	90	65.5	168.5	74	164.4	58	0.50
CH7-12-17BBP	CH7-12-17GSP	120	65.5	168.5	104	164.4	58	0.58
CH7-17-17BBP	CH7-17-17GSP	170	65.5	168.5	154	164.4	58	0.72
CH7-25-17BBP	CH7-25-17GSP	250	65.5	168.5	234	164.4	58	0.94
CH7-33-17BBP	CH7-33-17GSP	330	65.5	168.5	314	164.4	58	1.16
CH8-15-23BBP	CH8-15-23GSP	150	75	230.6	134	226.1	68.8	0.74
CH8-25-23BBP	CH8-25-23GSP	250	75	230.6	234	226.1	68.8	1.06
CH8-33-23BBP	CH8-33-23GSP	330	75	230.6	314	226.1	68.8	1.31
CH8-43-23BBP	CH8-43-23GSP	430	75	230.6	414	226.1	68.8	1.63

Accessories (Optional parts)

MR SERIES

TORX SCREW



- Material / Finish : Steel / Nickel plated
- TORX screw set for 1 unit.
- Recommended for aesthetic purposes, or for tamper-resistance.
- Requires the use of a specialized screwdriver.

Suitable Enclosures

Product no.	Suitable enclosures
MR-3CS	CH4 and CH6 models
MR-4CS	CH7 and CH8 models

Product no. / Dimensions

Product no.	Included screws	TORX head no.
MR-3CS	M3-10 countersunk x 8 pcs • M3-5 Slotted raised countersunk x 4 pcs	T10 (M3)
MR-4CS	M4-12 countersunk x 8 pcs • M3-5 Slotted raised countersunk x 4 pcs	T10 (M3) • T20 (M4)

AFS•AFM SERIES

ALUMINIUM ISOLATION FEET



- The surface treatment and finish allows the feet to exhibit a polished and luxurious feel.
- Non-slip NBR O-ring is present on the underside of the feet.
- Suitable for use in audio devices.

Available in both internal and external screw installation type.

External type / Shot blast finish (AFS series)



The external type is secured via screws from the underside / base of the feet to the enclosure. A thread hole is required for direct securing, while a circular hole is required for lock nut securing.

The shot blast finish provides a high quality surface finish look, and pairing well with various types of enclosure surfaces.

Available in both silver and black.

Internal type / Reflective finish (AFM series)



The internal type is secured via screws from the inside of the enclosure. A circular hole is required for securing into the pre-made threads in the top-side of the feet.

The reflective surface finish adds a high quality touch to the unit, allow it to have a luxurious look.

Available only in Silver.

Accessories (Optional parts)

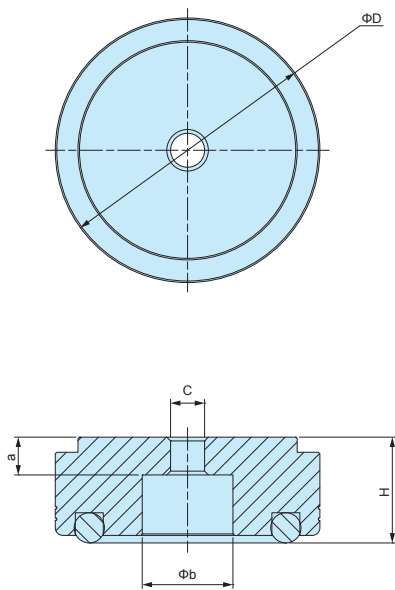
Product no. / Dimensions

Product no.		D	H	Installation type	C	a	b	Pack of
● Silver	● Black							
AFS20- 8S	AFS20- 8B	20	8	External	Φ3.4	3	9	4
AFS25-10S	AFS25-10B	25	10	External	Φ4.5	4	12	4
AFS30-12S	AFS30-12B	30	12	External	Φ4.5	5	12	4
AFS35-14S	AFS35-14B	35	14	External	Φ4.5	5	12	4
AFS39-16S	AFS39-16B	39	16	External	Φ4.5	5	15	4
AFS44-18S	AFS44-18B	44	18	External	Φ4.5	5	20	4
AFS55-20S	AFS55-20B	55	20	External	Φ5.5	5	20	4
AFM15- 7S	-	15	7	Internal	M3	4	-	4
AFM20- 9S	-	20	9	Internal	M3	5	-	4
AFM25-12S	-	25	12	Internal	M4	7	-	4
AFM30-14S	-	30	14	Internal	M4	8	-	4
AFM35-16S	-	35	16	Internal	M4	10	-	4
AFM39-18S	-	39	18	Internal	M4	10	-	4
AFM44-20S	-	44	20	Internal	M4	10	-	4
AFM55-22S	-	55	22	Internal	M5	15	-	4

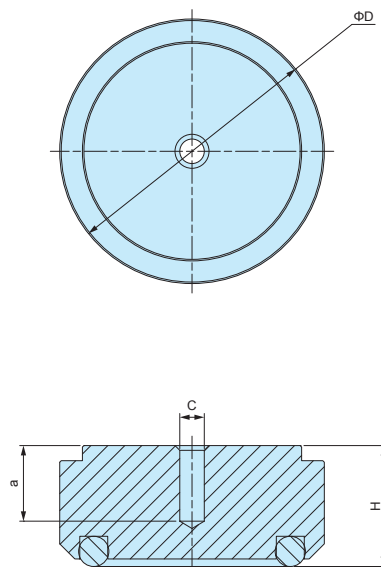
AFS • AFM dimensions

■ Drawings below are reference examples only.
DXF/DWG/PDF drawings available on our website.

AFS SERIES



AFM SERIES



APPLICATION EXAMPLE

