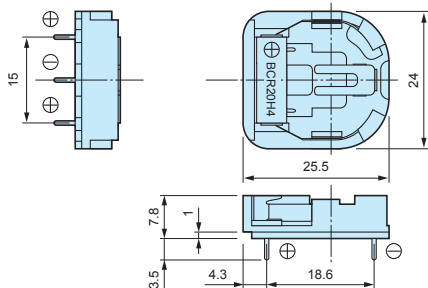
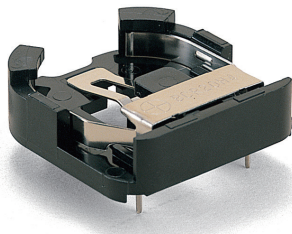


BCR SERIES

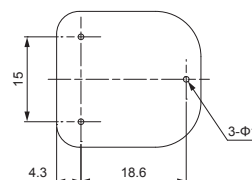
CR2032 COIN CELL HOLDER

■ DXF/DWG/PDF drawings available on our website.

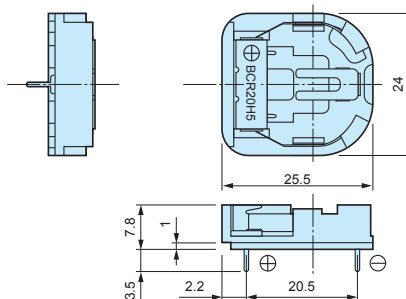
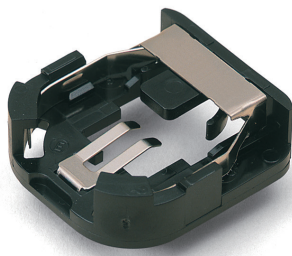
BCR20H4



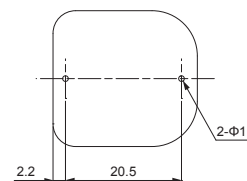
Installation hole layout



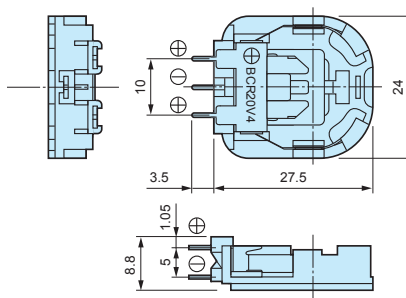
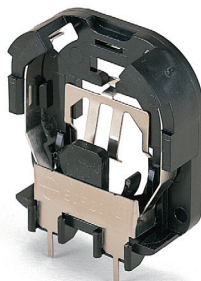
BCR20H5



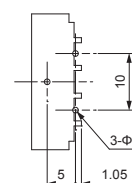
Installation hole layout



BCR20V4



Installation hole layout



Components

Holder material	Holder color	Contact material	Contact finish
PAR	Black	Stainless steel	Nickel plated

Technical Data

Operating temperature: -10°C ~ +85°C

Product no. / Feature

Product no.	Matching battery	Contact type	Weight (g)	Pack of
BCR20H4	CR2032	Through hole x 3	2.0	1
BCR20H5	CR2032	Through hole x 2	2.0	1
BCR20V4	CR2032	Through hole x 3	2.0	1
BCR20H4-T	CR2032	Through hole x 3	—	100 (20 pcs tray x 5)
BCR20H5-T	CR2032	Through hole x 2	—	100 (20 pcs tray x 5)
BCR20V4-T	CR2032	Through hole x 3	—	100 (20 pcs tray x 5)